

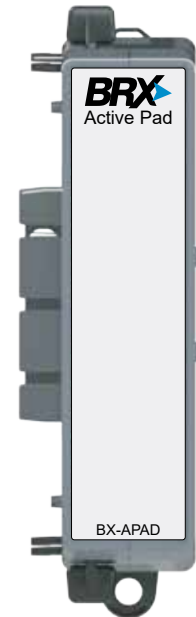
General Specifications	
Operating Temperature	0° to 60°C (32° to 140°F)
Storage Temperature	-20° to 85°C (-4° to 185°F)
Humidity	5 to 95% (non-condensing)
Environmental Air	No corrosive gases permitted
Vibration	IEC60068-2-6 (Test Fc)
Shock	IEC60068-2-27 (Test Ea)
Enclosure Type	Open Equipment
Agency Approvals	UL61010-2 - UL File # E185989 Canada and USA CE Compliant EN61131-2*
Noise Immunity	NEMA ICS3-304
EU Directive	See the "EU Directive" topic in the Help File
Heat Dissipation	0W
Weight	85g (3 oz)
Software Version	Do-more! Designer 2.7 or later

*Meets EMC and Safety requirements. See the D.O.C. for details.

Module Description

The BX-APAD module emulates other BRX modules in the I/O configuration of a BRX system. It is configured in software to emulate the address space of a specific BRX module. As a padding module, it can be used to reserve address space so that addressing in subsequent modules does not change if a module is removed. It also allows intelligent module configurations and data structures to be emulated.

NOTE: Cannot be configured in Remote I/O bases.

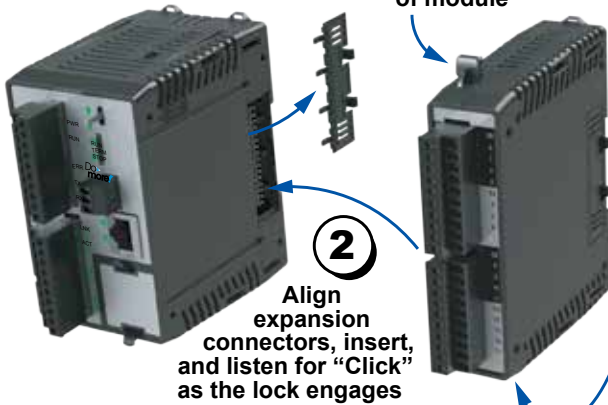


BX-APAD
Placeholder Module

Module Installation

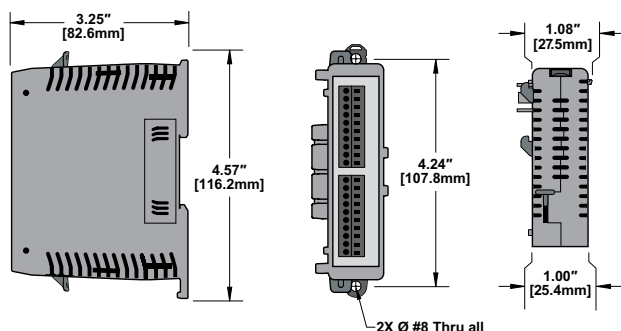
1 To Install, remove Connector Cover

To remove, depress disengagement plungers at top and bottom of module



Dimensional Information

Note: Drawings are for reference only. Shown without terminal blocks.



WARNING: To minimize the risk of potential safety problems, you should follow all applicable local and national codes that regulate the installation and operation of your equipment. These codes vary from area to area and it is your responsibility to determine which codes should be followed, and to verify that the equipment, installation, and operation are in compliance with the latest revision of these codes.

Equipment damage or serious injury to personnel can result from the failure to follow all applicable codes and standards. We do not guarantee the products described in this publication are suitable for your particular application, nor do we assume any responsibility for your product design, installation, or operation.

If you have any questions concerning the installation or operation of this equipment, or if you need additional information, please call Technical Support at 770-844-4200.

This publication is based on information that was available at the time it was printed. At AutomationDirect.com® we constantly strive to improve our products and services, so we reserve the right to make changes to the products and/or publications at any time without notice and without any obligation. This publication may also discuss features that may not be available in certain revisions of the product.

Do-more! BRX Manual available at www.automationdirect.com/pn/doc/manual/bx-apid



IMPORTANT!



Hot-Swapping Information

Note: This device cannot be Hot Swapped.

Document Name	Edition/Revision	Date
BX-APAD	1st Ed.	1/20/2020

Copyright 2020 AutomationDirect.com Incorporated/All Rights Reserved Worldwide.