

# AUTOMATIONDIRECT.com

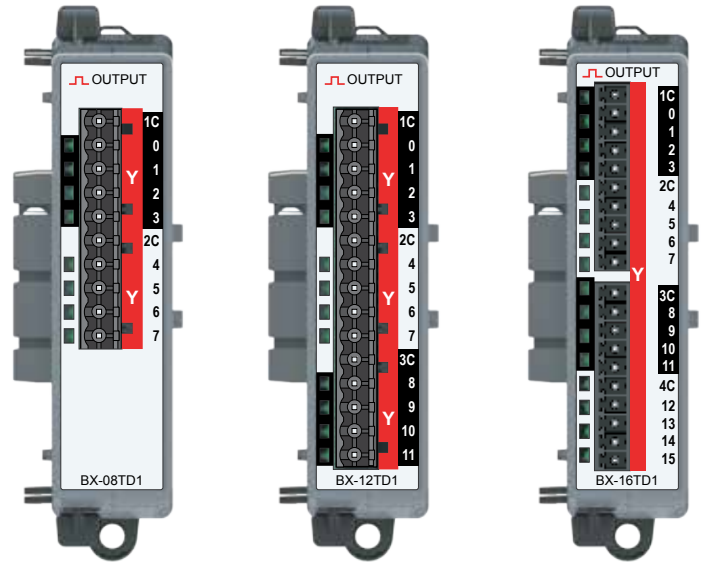
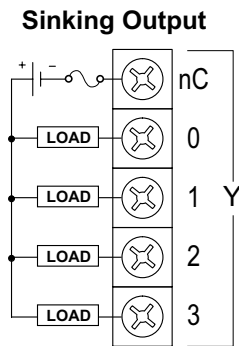
## BRX Expansion Module

### General Specifications

Operating Temperature	0° to 60° C (32° to 140° F)	
Storage Temperature	-20° to 85° C (-4° to 185° F)	
Humidity	5 to 95% (non-condensing)	
Environmental Air	No corrosive gases permitted	
Vibration	IEC60068-2-6 (Test Fc)	
Shock	IEC60068-2-27 (Test Ea)	
Enclosure Type	Open Equipment	
Agency Approvals	UL61010-2 - UL File # E185989 Canada and USA CE Compliant EN61131-2*	
Noise Immunity	NEMA ICS3-304	
EU Directive	See the "EU Directive" topic in the Help File	
Weight	BX-08TD1	91g (3.2 oz)
	BX-12TD1	93g (3.3 oz)
	BX-16TD1	95g (3.4 oz)
Software Version	Do-more! Designer 2.0 or later	

\*Meets EMC and Safety requirements. See the D.O.C. for details.

### I/O Wiring



### BX-08TD1

Output Module 8-pt,  
12–24 VDC, Sinking

### BX-12TD1

Output Module 12-pt,  
12–24 VDC, Sinking

### BX-16TD1

Output Module 16-pt,  
12–24 VDC, Sinking

**I/O Terminal Blocks sold separately.**  
(See Terminal Block Connection Options tables).

### Discrete Output Specifications

Output Type		Sinking
Outputs per Module	BX-08TD1	8
	BX-12TD1	12
	BX-16TD1	16
Commons	BX-08TD1	2 (4 points/common) Isolated
	BX-12TD1	3 (4 points/common) Isolated
	BX-16TD1	4 (4 points/common) Isolated
Maximum Current per Common		2A
Nominal Voltage Range		12–24 VDC
Operating Voltage Range		5–36 VDC
Maximum Voltage		36VDC
Minimum Output Current		0.1mA @ 24VDC
Maximum Output Current		0.5 A per output, no derating over temperature range
Maximum Leakage Current		10µA
Status Indicators		Logic Side, Green

**WARNING:** To minimize the risk of potential safety problems, you should follow all applicable local and national codes that regulate the installation and operation of your equipment. These codes vary from area to area and it is your responsibility to determine which codes should be followed, and to verify that the equipment, installation, and operation are in compliance with the latest revision of these codes.

**Equipment damage or serious injury to personnel can result from the failure to follow all applicable codes and standards. We do not guarantee the products described in this publication are suitable for your particular application, nor do we assume any responsibility for your product design, installation, or operation.**

If you have any questions concerning the installation or operation of this equipment, or if you need additional information, please call Technical Support at 770-844-4200.

This publication is based on information that was available at the time it was printed. At AutomationDirect.com® we constantly strive to improve our products and services, so we reserve the right to make changes to the products and/or publications at any time without notice and without any obligation. This publication may also discuss features that may not be available in certain revisions of the product.

Do-more BRX Manual available at  
<http://www.automationdirect.com/pn/doc/manual/BX-USER-M>



### IMPORTANT!



#### Hot-Swapping Information

**Note: This device cannot be Hot Swapped.**

Document Name	Edition/Revision	Date
BX-xxTD1	1st Ed. RevE	11/3/2020

Copyright 2021, AutomationDirect.com Incorporated/All Rights Reserved Worldwide.

## Connector Options – 8 and 12 point

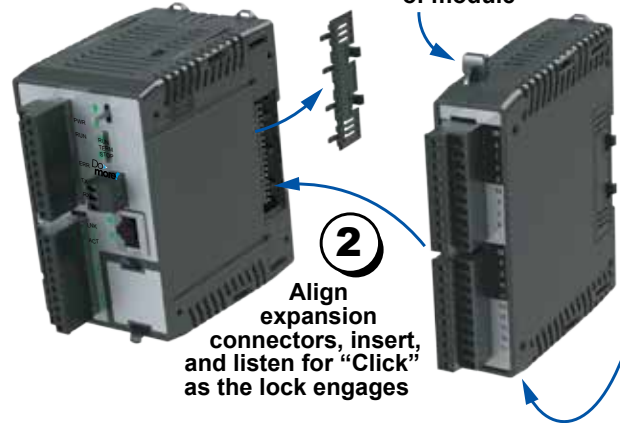
<b>BX-RTB08</b>	Terminal Block Kit, 90-degree screw type. For use with BRX 5-point, 8-point, and 12-point expansion modules. Kit includes (3) 5-pin 5mm plugs.
<b>BX-RTB08-1</b>	Terminal Block Kit, 180-degree spring clamp type. For use with BRX 5-point, 8-point, and 12-point expansion modules. Kit includes (3) 5-pin 5mm plugs.
<b>BX-RTB08-2</b>	Terminal Block Kit, 180-degree screw type. For use with BRX 5-point, 8-point, and 12-point expansion modules. Kit includes (3) 5-pin 5mm plugs.
<b>ZL-BXEM-CBL10</b>	ZIPLink PLC I/O cable, 10-position terminal block to 24-pin connector, 24AWG, cable length 0.5meter (1.6ft). For use with 8-point BRX expansion modules.
<b>ZL-BXEM-CBL10-1</b>	ZIPLink PLC I/O cable, 10-position terminal block to 24-pin connector, 24AWG, cable length 1meter (3.3ft). For use with 8-point BRX expansion modules.
<b>ZL-BXEM-CBL10-2</b>	ZIPLink PLC I/O cable, 10-position terminal block to 24-pin connector, 24AWG, cable length 2meter (6.6ft). For use with 8-point BRX expansion modules.
<b>ZL-BXEM-CBL10-1P</b>	ZIPLink PLC I/O cable, 10-position terminal block to pigtail connection, 24AWG, cable length 1meter (3.3ft). For use with 8-point BRX expansion modules.
<b>ZL-BXEM-CBL10-2P</b>	ZIPLink PLC I/O cable, 10-position terminal block to pigtail connection, 24AWG, cable length 2meter (6.6ft). For use with 8-point BRX expansion modules.
<b>ZL-BXEM-CBL15</b>	ZIPLink PLC I/O cable, 15-position terminal block to 24-pin connector, 24AWG, cable length 1meter (1.6ft). For use with 5-point and 12-point BRX expansion modules.
<b>ZL-BXEM-CBL15-1</b>	ZIPLink PLC I/O cable, 15-position terminal block to 24-pin connector, 24AWG, cable length 1meter (3.3ft). For use with 5-point and 12-point BRX expansion modules.
<b>ZL-BXEM-CBL15-2</b>	ZIPLink PLC I/O cable, 15-position terminal block to 24-pin connector, 24AWG, cable length 2meter (6.6ft). For use with 5-point and 12-point BRX expansion modules.
<b>ZL-BXEM-CBL15-1P</b>	ZIPLink PLC I/O cable, 15-position terminal block to pigtail connection, 24AWG, cable length 1meter (3.3ft). For use with 5-point and 12-point BRX expansion modules.
<b>ZL-BXEM-CBL15-2P</b>	ZIPLink PLC I/O cable, 15-position terminal block to pigtail connection, 24AWG, cable length 2meter (6.6ft). For use with 5-point and 12-point BRX expansion modules.
<b>ZL-RTB20</b>	ZIPLink Two Level Feedthrough Module, 20-pole, 35mm, DIN mount.
<b>ZL-RTB20-1</b>	ZIPLink Three Level Feedthrough Module, 20-pole, 35mm, DIN mount.

## Module Installation

1

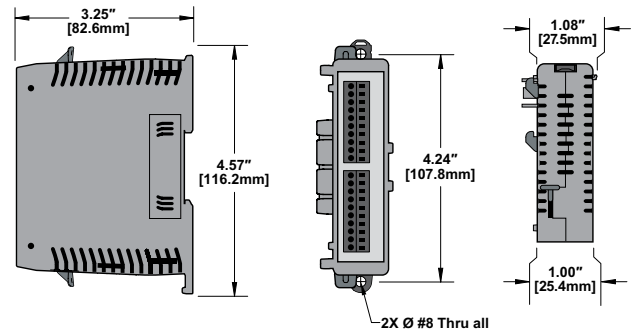
To Install, remove Connector Cover

To remove, depress disengagement plungers at top and bottom of module



## Dimensional Information

Note: Drawings are for reference only. Shown without terminal blocks.



## Connector Options – 16 point

<b>BX-RTB10</b>	Terminal Block Kit, 90-degree screw type. For use with BRX 10-point PLCs and BRX 16-point expansion modules. Kit includes (2) 10-pin 3.8mm plugs.
<b>BX-RTB10-1</b>	Terminal Block Kit, 180-degree spring clamp type. For use with BRX 10-point PLCs and BRX 16-point expansion modules. Kit includes (2) 10-pin 3.8mm plugs.
<b>BX-RTB10-2</b>	Terminal Block Kit, 180-degree screw type. For use with BRX 10-point PLCs and BRX 16-point expansion modules. Kit includes (2) 10-pin 3.8mm plugs.
<b>ZL-BXEM-CBL20</b>	ZIPLink PLC I/O cable, 20-position terminal block to 24-pin connector, 24AWG, cable length 0.5meter (1.6ft). For use with 16-point BRX expansion modules.
<b>ZL-BXEM-CBL20-1</b>	ZIPLink PLC I/O cable, 20-position terminal block to 24-pin connector, 24AWG, cable length 1meter (3.3ft). For use with 16-point BRX expansion modules.
<b>ZL-BXEM-CBL20-2</b>	ZIPLink PLC I/O cable, 20-position terminal block to 24-pin connector, 24AWG, cable length 2meter (6.6ft). For use with 16-point BRX expansion modules.
<b>ZL-BXEM-CBL20-1P</b>	ZIPLink PLC I/O cable, 20-position terminal block to pigtail connection, 24AWG, cable length 1meter (3.3ft). For use with 16-point BRX expansion modules.
<b>ZL-BXEM-CBL20-2P</b>	ZIPLink PLC I/O cable, 20-position terminal block to pigtail connection, 24AWG, cable length 2meter (6.6ft). For use with 16-point BRX expansion modules.
<b>ZL-RTB20</b>	ZIPLink Two Level Feedthrough Module, 20-pole, 35mm, DIN mount.
<b>ZL-RTB20-1</b>	ZIPLink Three Level Feedthrough Module, 20-pole, 35mm, DIN mount.
<b>ZL-RRL16-24-1</b>	ZIPLink relay output module, 16-point, sinking, (16) Form C (SPDT) relays, LED indication, 24VDC (coil), 8A at 250VAC, 10A at 30VDC, DIN rail mount.
<b>ZL-RRL16W-24-1</b>	ZIPLink reduced-width relay output module, 16-point, sinking, (16) Form C (SPDT) relays, LED indication, 24VDC (coil), 8A at 250VAC, 10A at 30VDC, DIN rail mount.
<b>ZL-RRL16F-24-1</b>	ZIPLink fused relay output module, 16-point, sinking, (16) Form C (SPDT) relays, LED indication, 24VDC (coil), 8A at 250VAC, 8A at 30VDC, DIN rail mount.
<b>ZL-RRL16HDF-24-1</b>	ZIPLink high-density fused relay output module, 16-point, sinking, (16) Form C (SPDT) relays, LED indication, 24VDC (coil), 5A at 250VAC, 5A at 30VDC, DIN rail mount.

## 8 and 12 point Terminal Block Connector Specifications

Part Number	BX-RTB08	BX-RTB08-1	BX-RTB08-2
Connector Type	Screw Type-90°	Spring Clamp Type-180°	Screw Type-180°
Wire Exit	180°	180°	180°
Pitch	5.0mm	5.0mm	5.0mm
Screw Size	M2.5	N/A	M2.5
Recommended Screw torque	< 3.98 lb-in (0.45 N-m)	N/A	< 3.98 lb-in (0.45 N-m)
Screwdriver Blade Width	3.5mm	3.5mm	3.5mm
Wire Gauge (Single Wire)	28-12 AWG	28-14 AWG	28-12 AWG
Wire Gauge (Two Wires)	28-16 AWG	28-16 AWG (Dual Wire Ferrule Required)	28-16 AWG
Wire Strip Length	0.3in (7.5mm)	0.37in (9.5mm)	0.3in (7.5mm)
Equiv. Dinkle part #	5ESDV-05P-BK	5ESDSR-05P-BK	5ESDF-05P-BK

## 16 point Terminal Block Connector Specifications

Part Number	BX-RTB10	BX-RTB10-1	BX-RTB10-2
Connector Type	Screw Type-90°	Spring Clamp Type-180°	Screw Type-180°
Wire Exit	180°	180°	180°
Pitch	3.81mm	3.81mm	3.81mm
Screw Size	M2	N/A	M2
Recommended Screw torque	<1.77 lb-in (0.2 N-m)	N/A	<1.77 lb-in (0.2 N-m)
Screwdriver Blade Width	2.5mm	2.5mm	2.5mm
Wire Gauge (Single Wire)	28-16 AWG	28-18 AWG	30-16 AWG
Wire Gauge (Two Wires)	28-18 AWG	30-20 AWG (Dual Wire Ferrule Required)	30-18 AWG
Wire Strip Length	0.24in (6mm)	0.35in (9mm)	0.26in (6.5mm)
Equiv. Dinkle part #	EC381V-10P-BK	ESC381V-10-BK	EC381F-10P-BK