

General Specifications

| | |
|-----------------------|---|
| Operating Temperature | 0° to 60°C (32° to 140°F) |
| Storage Temperature | -20° to 85°C (-4° to 185°F) |
| Humidity | 5 to 95% (non-condensing) |
| Environmental Air | No corrosive gases permitted |
| Vibration | IEC60068-2-6 (Test Fc) |
| Shock | IEC60068-2-27 (Test Ea) |
| Enclosure Type | Open Equipment |
| Agency Approvals | UL61010-2 - UL File # E185989 Canada and USA CE Compliant EN61131-2* |
| Noise Immunity | NEMA ICS3-304 |
| EU Directive | See the "EU Directive" topic in the Help File |
| Heat Dissipation | 1.2W |
| Weight | 85g (3 oz) |
| Software Version | Do-more! Designer 2.5 or later |

*Meets EMC and Safety requirements. See the D.O.C. for details.

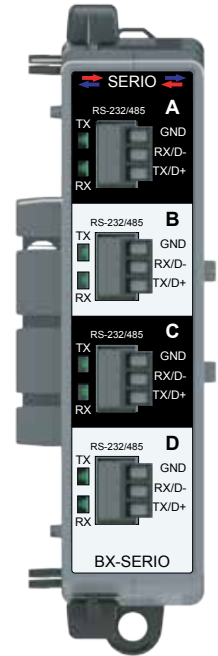
AUTOMATIONDIRECT.com

BRX Expansion Module

BX-SERIO

Serial Communications Module

4 Isolated ports, 3-pin,
RS-232/RS-485



Four removable 5-pin connectors included.

RS-232/485 Serial Port Specifications

| | | |
|--------------------------------------|--|--|
| Number of Ports | Four RS-232/RS-485 Serial Ports | |
| Description | Isolated serial port that can communicate via RS-232 or RS-485 (software selectable). Includes ESD protection and built-in surge protection. | |
| Supported Protocols | Do-more!™ Protocol (Slave)(Default), Modbus RTU (Master/Slave), DMX512 (Master/Slave), K-Sequence (Slave), ASCII (In/Out) | |
| Data Rates | 1200, 2400, 4800, 9600, 19200, 38400, 57600, and 115200 Baud | |
| Default Settings | RS-232, 115200bps, No Parity, 8 Data Bits, 1 Stop Bit, Station #1, Termination resistor OFF | |
| Port Status LED | Green LED illuminated when active (TX and RX) | |
| Port Type | Removable 3-pin terminal strip 3.5 mm pitch | |
| | RS-232 | RS-485 |
| Station Addresses | N/A | 1-247 |
| RX/D- | Receive input (RX) | Transceiver low (D-) |
| TX/D+ | Transmit output (TX) | Transceiver high (D+) |
| GND | Logic Ground | |
| Input Impedance | 5kΩ | 19kΩ |
| Terminating Resistor | N/A | 120Ω, software selectable |
| Maximum Load | 3kΩ, 1000pf | 50 transceivers, 19kΩ each, 120Ω termination |
| Output Short Circuit Protection | ±15mA | ±250mA, thermal shut-down protection |
| Electrostatic Discharge Protection | ±1.5 kV per JESD22-C101 | ±7kV per IEC61000-4-2 |
| Electrical Fast Transient Protection | N/A | ±2kV per IEC61000-4-4 |
| Min. Output Voltage | ±5V with 3kΩ load | Differential: 1.5 V with 60Ω load |
| Fail Safe Inputs | N/A | Logic high input state if inputs are unconnected |
| Maximum Common Mode Voltage | 500 Vrms to Logic Ground | |
| Cable Requirements | ADC# L19772-XXX | ADC# L19954-XXX |
| Maximum Cable Distance | 30m [100ft]; 6m [20ft] rec'd max. | 1000m [3280ft] |
| Replacement Connector | ADC Part # BX-RTB03S | |

WARNING: To minimize the risk of potential safety problems, you should follow all applicable local and national codes that regulate the installation and operation of your equipment. These codes vary from area to area and it is your responsibility to determine which codes should be followed, and to verify that the equipment, installation, and operation are in compliance with the latest revision of these codes.

Equipment damage or serious injury to personnel can result from the failure to follow all applicable codes and standards. We do not guarantee the products described in this publication are suitable for your particular application, nor do we assume any responsibility for your product design, installation, or operation.

If you have any questions concerning the installation or operation of this equipment, or if you need additional information, please call Technical Support at 770-844-4200.

This publication is based on information that was available at the time it was printed. At AutomationDirect.com® we constantly strive to improve our products and services, so we reserve the right to make changes to the products and/or publications at any time without notice and without any obligation. This publication may also discuss features that may not be available in certain revisions of the product.

Do-more! BRX Manual available at www.automationdirect.com/pn/doc/manual/BX-SERIO



IMPORTANT!



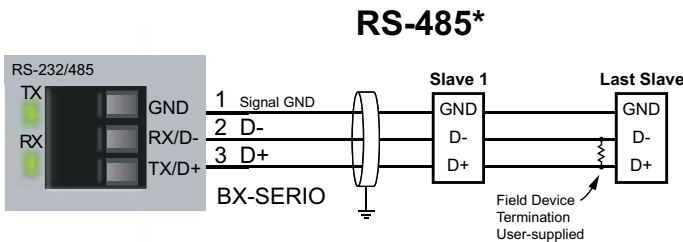
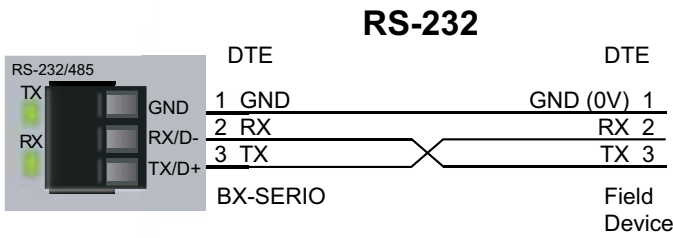
Hot-Swapping Information

Note: This device cannot be Hot Swapped.

| | | |
|---------------|------------------|-----------|
| Document Name | Edition/Revision | Date |
| BX-SERIO | 1st Ed. | 11/3/2020 |

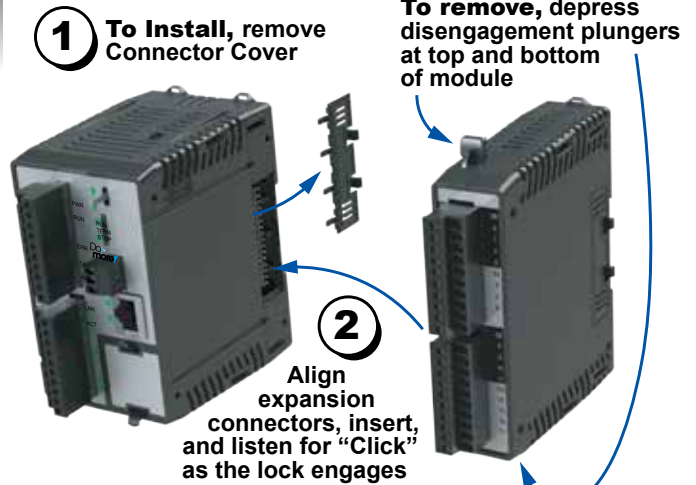
Copyright 2021, AutomationDirect.com Incorporated/All Rights Reserved Worldwide.

Field Wiring Information



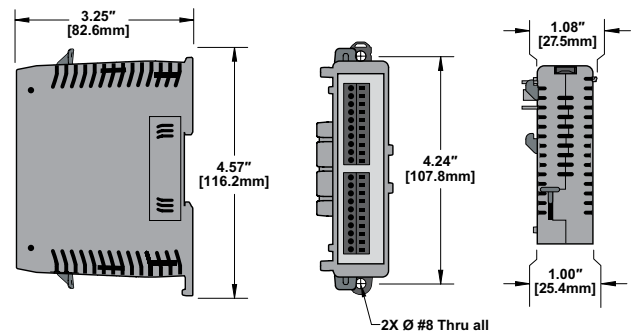
*NOTE: Termination resistor is built-in and software selectable.
ADC # L19827-xxx or equivalent is recommend for RS-485 networks.

Module Installation

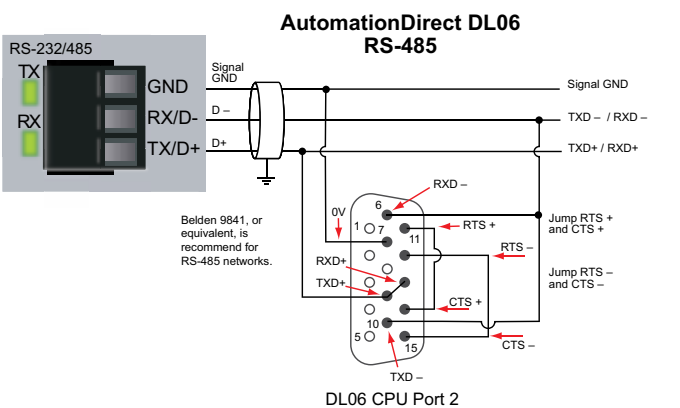
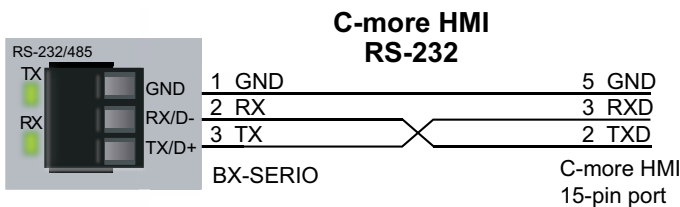


Dimensional Information

Note: Drawings are for reference only. Shown without terminal blocks.



Example Wiring Connections



Terminal Block Connector Specifications

| | |
|--------------------------|----------------------|
| Part Number | BX-RTB03S |
| Connector Type | Screw Type-90 |
| Wire Exit | 90 degree |
| Pitch | 3.5mm |
| Screw Size | M2 |
| Recommended Screw torque | <1.77Lb-in (0.2 N-m) |
| Screwdriver Blade Width | 2.5mm |
| Wire Gauge (Single Wire) | 28-16 AWG |
| Wire Gauge (Two Wires) | 28-16 AWG |
| Wire Strip Length | 0.24in (6mm) |
| Equiv. Dinkle part # | EC350V-03P-BK |

RS-232/485 Port Replacement Connector

| | | | |
|-----------------------|----------------------|--------------|--------------|
| Replacement Connector | ADC Part # BX-RTB03S | | |
| | Pinout | RS232 | RS485 |
| | 1 | GND | GND |
| | 2 | RX | D- |
| | 3 | TX | D+ |

* NOTE: When using RS-485, a terminator resistor is built-in and software selectable.