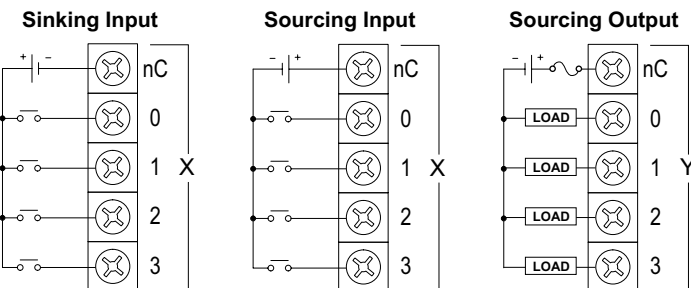


General Specifications

Operating Temperature	0° to 60° C (32° to 140° F)
Storage Temperature	-20° to 85° C (-4° to 185° F)
Humidity	5 to 95% (non-condensing)
Environmental Air	No corrosive gases permitted
Vibration	IEC60068-2-6 (Test Fc)
Shock	IEC60068-2-27 (Test Ea)
Enclosure Type	Open Equipment
Agency Approvals	UL61010-2 - UL File # E185989 Canada and USA CE Compliant EN61131-2*
Noise Immunity	NEMA ICS3-304
EU Directive	See the "EU Directive" topic in the Help File
Weight	91g (3.2 oz)
Software Version	Do-more! Designer v2.11 or later

*Meets EMC and Safety requirements. See the D.O.C. for details.

I/O Wiring



AUTOMATIONDIRECT.com

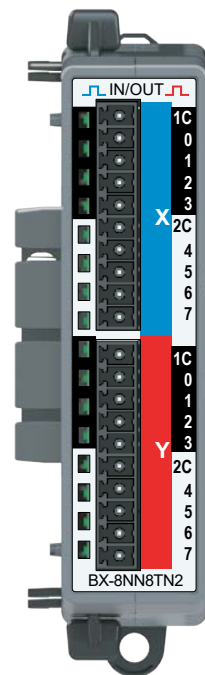
BRX Expansion Module

BX-8NN8TN2

Combination Discrete Module

In: 8-pt, 48 VDC, Sinking/Sourcing

Out: 8-pt, 48 VDC, Sourcing



I/O Terminal Blocks sold separately.
(See Terminal Block Connection Options tables).

Discrete Input Specifications

Input Type	Sink/Source
Inputs per Module	8
Commons	2
Nominal Voltage Range	48 VDC
Input Voltage Range	40–56 VDC
Maximum Voltage	56 VDC
Input Impedance	16kΩ @ 48 VDC
Input Current (typical)	3 mA @ 48 VDC
Maximum Input Current	5 mA @ 48 VDC
ON Voltage Level	> 30 VDC
OFF Voltage Level	< 15 VDC
Status Indicators	Logic Side, Green

Discrete Output Specifications

Outputs Type	Sourcing
Outputs per Module	8
Commons	2
Maximum Current per Common	4A
Nominal Voltage Range	48–60 VDC
Operating Voltage Range	20–60 VDC
Maximum Voltage	60 VDC
Minimum Output Current	1 mA
Maximum Output Current	1A per point
Maximum Leakage Current	10μA
Status Indicators	Logic Side, Green

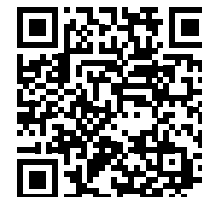
WARNING: To minimize the risk of potential safety problems, you should follow all applicable local and national codes that regulate the installation and operation of your equipment. These codes vary from area to area and it is your responsibility to determine which codes should be followed, and to verify that the equipment, installation, and operation are in compliance with the latest revision of these codes.

Equipment damage or serious injury to personnel can result from the failure to follow all applicable codes and standards. We do not guarantee the products described in this publication are suitable for your particular application, nor do we assume any responsibility for your product design, installation, or operation.

If you have any questions concerning the installation or operation of this equipment, or if you need additional information, please call Technical Support at 770-844-4200.

This publication is based on information that was available at the time it was printed. At AutomationDirect.com® we constantly strive to improve our products and services, so we reserve the right to make changes to the products and/or publications at any time without notice and without any obligation. This publication may also discuss features that may not be available in certain revisions of the product.

Do-more! BRX Manual available at
<http://www.automationdirect.com/pn/doc/manual/BX-BX-8NNTN2>



IMPORTANT!



Hot-Swapping Information

Note: This device cannot be Hot-Swapped.

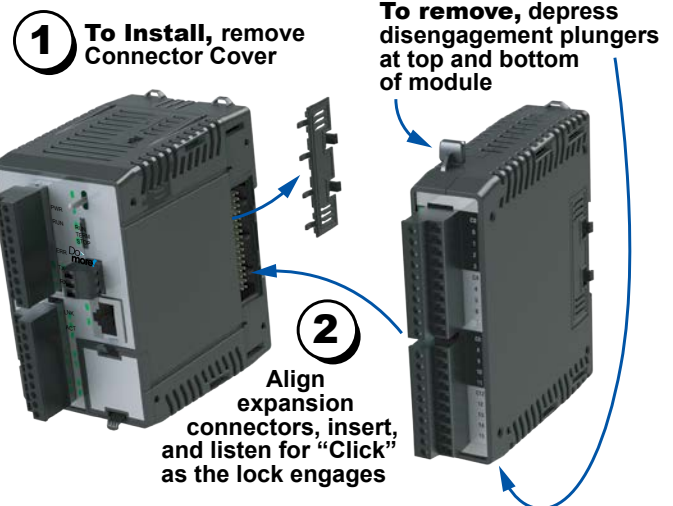
Document Name	Edition/Revision	Date
BX-8NNTN2	1st Ed.	8/27/2025

Copyright 2025, AutomationDirect.com Incorporated/All Rights Reserved Worldwide.

Connector Options — 16 point

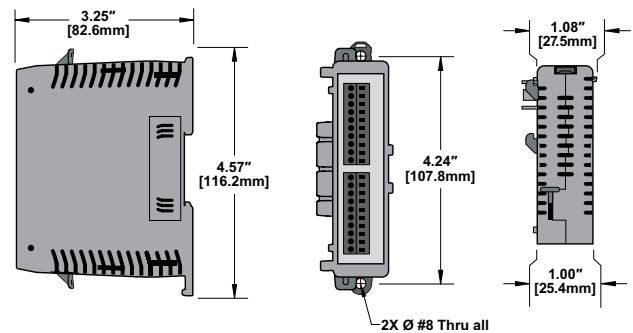
BX-RTB10	Terminal Block Kit, 90-degree screw type. For use with BRX 10-point PLCs and BRX 16-point expansion modules. Kit includes (2) 10-pin 3.8mm plugs.
BX-RTB10-1	Terminal Block Kit, 180-degree spring clamp type. For use with BRX 10-point PLCs and BRX 16-point expansion modules. Kit includes (2) 10-pin 3.8mm plugs.
BX-RTB10-2	Terminal Block Kit, 180-degree screw type. For use with BRX 10-point PLCs and BRX 16-point expansion modules. Kit includes (2) 10-pin 3.8mm plugs.
ZL-BXEM-CBL20	ZIPLink PLC I/O cable, 20-position terminal block to 24-pin connector, 24AWG, cable length 0.5m (1.6ft). For use with 16-point BRX expansion modules.
ZL-BXEM-CBL20-1	ZIPLink PLC I/O cable, 20-position terminal block to 24-pin connector, 24AWG, cable length 1m (3.3ft). For use with 16-point BRX expansion modules.
ZL-BXEM-CBL20-2	ZIPLink PLC I/O cable, 20-position terminal block to 24-pin connector, 24AWG, cable length 2m (6.6ft). For use with 16-point BRX expansion modules.
ZL-BXEM-CBL20-1P	ZIPLink PLC I/O cable, 20-position terminal block to pigtail connection, 24AWG, cable length 1m (3.3ft). For use with 16-point BRX expansion modules.
ZL-BXEM-CBL20-2P	ZIPLink PLC I/O cable, 20-position terminal block to pigtail connection, 24AWG, cable length 2m (6.6ft). For use with 16-point BRX expansion modules.
ZL-RTB20	ZIPLink Two Level Feedthrough Module, 20-pole, 35mm, DIN mount.
ZL-RTB20-1	ZIPLink Three Level Feedthrough Module, 20-pole, 35mm, DIN mount.

Module Installation



Dimensional Information

Note: Drawings are for reference only. Shown without terminal blocks.



16 point Terminal Block Connector Specifications

Part Number	BX-RTB10	BX-RTB10-1	BX-RTB10-2
Connector Type	Screw Type-90°	Spring Clamp Type-180°	Screw Type-180°
Wire Exit	180°	180°	180°
Pitch	3.81mm	3.81mm	3.81mm
Screw Size	M2	N/A	M2
Recommended Screw torque	<1.77 lb·in (0.2 N·m)	N/A	<1.77 lb·in (0.2 N·m)
Screwdriver Blade Width	2.5mm	2.5mm	2.5mm
Wire Gauge (Single Wire)	28-16 AWG	28-18 AWG	30-16 AWG
Wire Gauge (Two Wires)	28-18 AWG	30-20 AWG (Dual Wire Ferrule Required)	30-18 AWG
Wire Strip Length	0.24in (6mm)	0.35in (9mm)	0.26in (6.5mm)
Equiv. Dinkle part #	EC381V-10P-BK	ESC381V-10-BK	EC381F-10P-BK