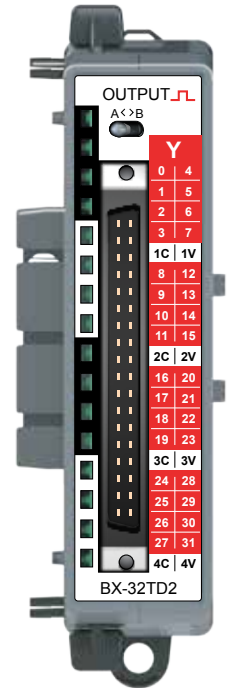


General Specifications	
Operating Temperature	0° to 60°C (32° to 140°F)
Storage Temperature	-20° to 85°C (-4° to 185°F)
Humidity	5 to 95% (non-condensing)
Environmental Air	No corrosive gases permitted
Vibration	IEC60068-2-6 (Test Fc)
Shock	IEC60068-2-27 (Test Ea)
Enclosure Type	Open Equipment
Agency Approvals	UL61010-2 - UL File # E185989 Canada and USA CE Compliant EN61131-2*
Noise Immunity	NEMA ICS3-304
EU Directive	See the "EU Directive" topic in the Help File
Heat Dissipation	3.2W
Weight	113g (4 oz)
Software Version	Do-more! Designer 2.3 or later

*Meets EMC and Safety requirements. See the D.O.C. for details.

BX-32TD2

Output Module 32-pt. 12-24 VDC, Sourcing



ZIPLink Cable Required.
(See Connector Options table).

Output Specifications	
Output Type	Sourcing
Total Outputs per Module	32
Commons	4 (8 points/common) Isolated
Maximum Current per Common	4A
Nominal Voltage Range	12 – 24 VDC
Operating Voltage Range	5 – 36 VDC
Maximum Voltage	36 VDC
Minimum Output Current	0.1mA @ 24 VDC
Maximum Load Current	0.5A per output No derating over temperature range
Nominal Voltage Rating (Bias)	12-24 VDC
Maximum Current per Common (Bias)	23mA
Maximum Inrush Current	5A for 50ms
Maximum Leakage Current	10µA
ON Voltage Drop	0.14 VDC Max
Status Indicators	Logic Side, Green (16 LEDs for half of outputs per A/B switch)
OFF to ON Response	< 5ms
ON to OFF Response	< 2ms
Maximum Switching Frequency	143 Hz
Overcurrent, Short Circuit Protection and Short to Ground	N/A
Overcurrent Trip Level	N/A
Fuse Type	User-supplied external fuse

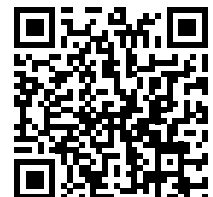
WARNING: To minimize the risk of potential safety problems, you should follow all applicable local and national codes that regulate the installation and operation of your equipment. These codes vary from area to area and it is your responsibility to determine which codes should be followed, and to verify that the equipment, installation, and operation are in compliance with the latest revision of these codes.

Equipment damage or serious injury to personnel can result from the failure to follow all applicable codes and standards. We do not guarantee the products described in this publication are suitable for your particular application, nor do we assume any responsibility for your product design, installation, or operation.

If you have any questions concerning the installation or operation of this equipment, or if you need additional information, please call Technical Support at 770-844-4200.

This publication is based on information that was available at the time it was printed. At AutomationDirect.com® we constantly strive to improve our products and services, so we reserve the right to make changes to the products and/or publications at any time without notice and without any obligation. This publication may also discuss features that may not be available in certain revisions of the product.

Do-more! BRX Manual available at www.automationdirect.com/pn/doc/manual/BX-32TD2



IMPORTANT!



Hot-Swapping Information

Note: This device cannot be Hot Swapped.

Document Name	Edition/Revision	Date
BX-32TD2	1st Ed. RevA	11/3/2020

Copyright 2021, AutomationDirect.com Incorporated/All Rights Reserved Worldwide.

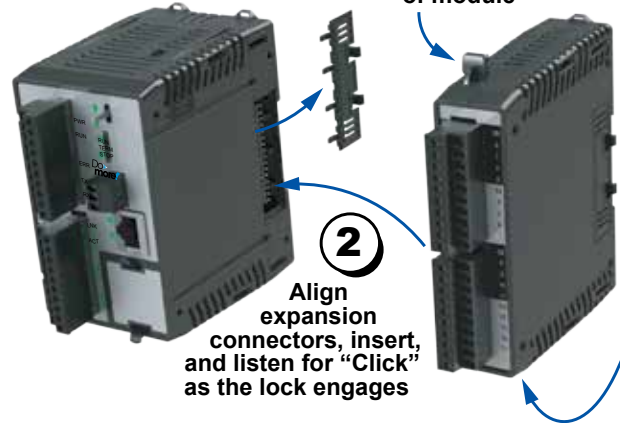
Connector Options – 32 point

ZL-D24-CBL40	ZIPLink PLC I/O cable, 40-pin connector to 40-pin connector, 180-degree connector angle, 1.6ft/0.5m cable length.
ZL-D24-CBL40-1	ZIPLink PLC I/O cable, 40-pin connector to 40-pin connector, 180-degree connector angle, 3.2ft/1m cable length.
ZL-D24-CBL40-2	ZIPLink PLC I/O cable, 40-pin connector to 40-pin connector, 180-degree connector angle, 6.5ft/2m cable length.
ZL-D24-CBL40-1P	ZIPLink PLC I/O cable, 40-pin connector to pigtail, 180-degree connector angle, 3.2ft/1m cable length.
ZL-D24-CBL40-2P	ZIPLink PLC I/O cable, 40-pin connector to pigtail, 180-degree connector angle, 6.5ft/2m cable length.
ZL-D24-CBL40-X	ZIPLink PLC I/O cable, 40-pin connector to 40-pin connector, 45-degree connector angle, 1.6ft/0.5m cable length.
ZL-D24-CBL40-1X	ZIPLink PLC I/O cable, 40-pin connector to 40-pin connector, 45-degree connector angle, 3.2ft/1m cable length.
ZL-D24-CBL40-2X	ZIPLink PLC I/O cable, 40-pin connector to 40-pin connector, 45-degree connector angle, 6.5ft/2m cable length.
ZL-D24-CBL40-1XP	ZIPLink PLC I/O cable, 40-pin connector to pigtail, 45-degree connector angle, 3.2ft/1m cable length.
ZL-D24-CBL40-2XP	ZIPLink PLC I/O cable, 40-pin connector to pigtail, 45-degree connector angle, 6.5ft/2m cable length.
ZL-RTB40	ZIPLink Two Level Feedthrough Module, 40-pole, 35mm, DIN mount.
ZL-RTB40-1	ZIPLink Three Level Feedthrough Module, 40-pole, 35mm, DIN mount.

Module Installation

1 To Install, remove Connector Cover

To remove, depress disengagement plungers at top and bottom of module



2 Align expansion connectors, insert, and listen for "Click" as the lock engages

Dimensional Information

Note: Drawings are for reference only. Shown without terminal blocks.

