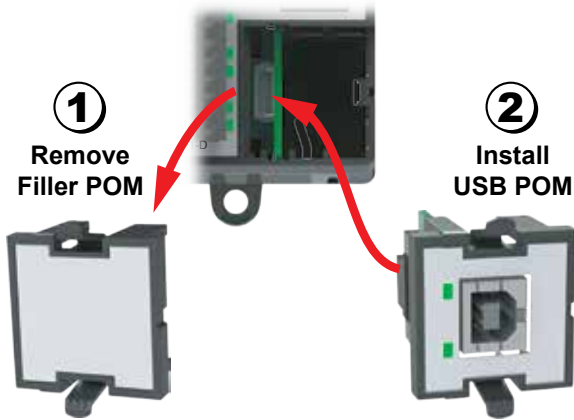



## Connect BRX MPU to Computer Using Programming Cable

- Install the USB POM unit into the MPU Plug-in POM slot as shown.



### BX-P-USB-B Specifications

Port Name	USB Programming Port
	USB Type B Port that can be utilized for programming and monitoring.
USB Specification Version	USB 2.0
Port Status LED	LED flashes when port is active

- Using the USB cable connect to the USB POM module and to the USB port on the computer.



- You are now ready to program the BRX MPU using the Do-more! Designer Software. The software can be downloaded for free at <http://support.automationdirect.com/products/domore.html>.
- For more detail on programming or getting started please refer to the BRX Do-more! Designer Getting Started chapter in the BRX user's manual.

**NOTE:** Requires Do-more! Designer version 2.0 or newer.



## BX-PGM-CBL

### Programming Cable Assembly

Includes (1) BX-P-USB-B USB POM module and (1) USB-CBL-AB6 standard USB Type A to USB Type B connector cable.

The programming cable assembly connects your PC to any BRX MPU and allows you to program and configure the BRX MPU using the free Do-more! Designer software.

### USB-CBL-AB6 Specifications

Component Type	USB 2.0 cable
Cable Length	6 ft. (1.8 meter)
Connector Type	Standard A plug to Standard B plug
Replacement Cable Recommendation	USB-CBL-ABxx from AutomationDirect.com

NOTE: xx = 3 (3 ft.), 6 (6 ft.), 10 (10 ft.), 15 (15 ft.)

Do-more BRX Manual available at <http://www.automationdirect.com/pn/doc/manual/BX-PGM-CBL>



## IMPORTANT!



### Hot-Swapping Information

**Note: This device may be Hot Swapped.**

Document Name	Edition/Revision	Date
BX-PGM-CBL	1st Ed.	1/4/2017

Copyright 2017, AutomationDirect.com Incorporated/All Rights Reserved Worldwide.