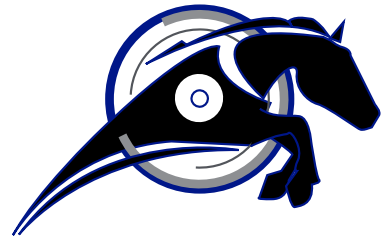


IronHorse ACN AC Drive Option Card Installation Instructions



IRONHORSE®

The following steps illustrate how to install the ACN-EIO or the ACN-ETH Option Card on the IronHorse ACN series drive.



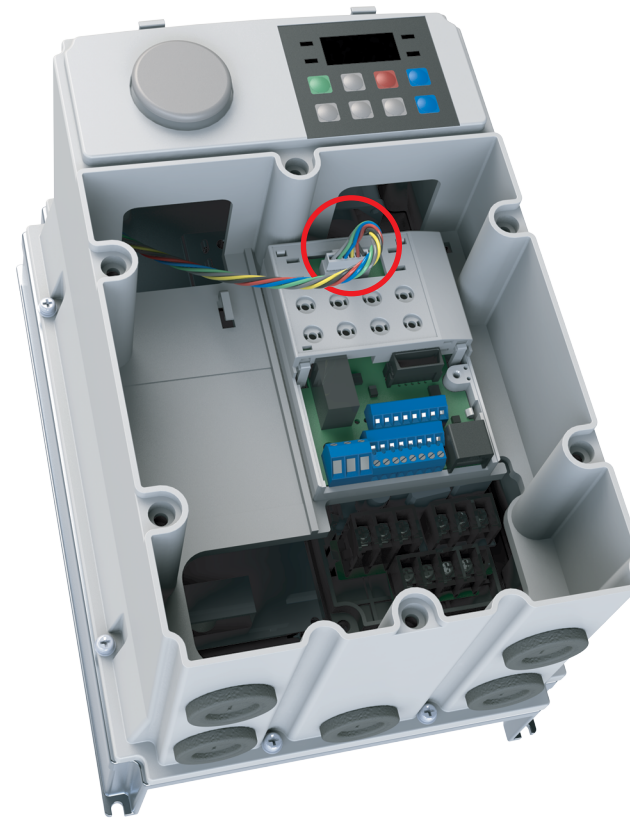
NOTE: Ensure all control board cables are terminated *BEFORE* installing the option card. Once the option card is installed, there is no access to the control terminals.



WARNING: ENSURE ALL POWER IS REMOVED FROM THE DRIVE BEFORE INSTALLING OR REMOVING ANY OPTION CARD. FAILURE TO COMPLY WILL DAMAGE THE DRIVE.



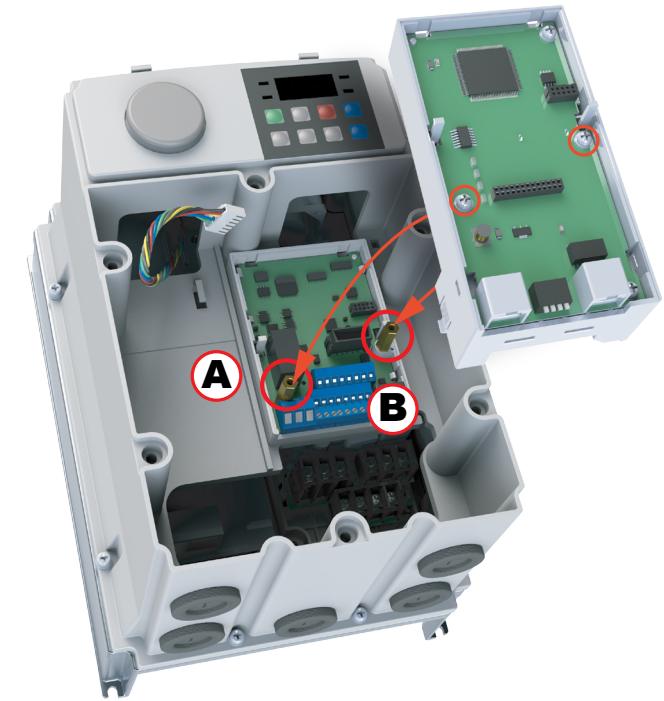
- 1) Loosen all front cover screws and remove the cover plate. Remove the face plate from the front of the Option card.



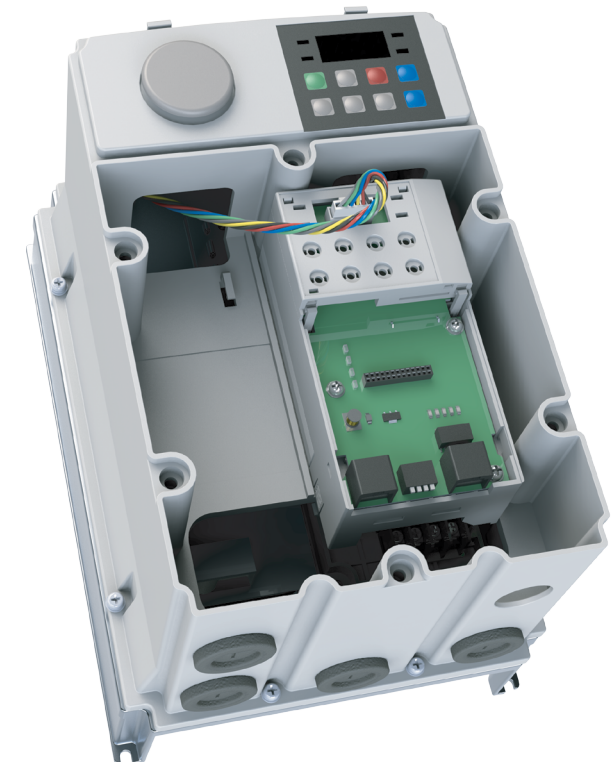
- 2) Remove keypad connector.



- 3) Remove the white keypad adapter PCB. It may be helpful to use a screwdriver to clear the plastic tabs (circled).



- 4) Once the keypad PCB adapter is removed, remove the existing bottom left screw(A) on the IO board. Keep this screw for later use. Fasten the included brass bar (M3xL23) to (A), and (M3xL17.3) to (B).
- 5) Install the Option Card and fasten the screws to the brass bars installed in the previous step.



- 6) Snap the keypad adapter PCB back into place on the Option Card and reconnect the keypad connector cable. Connect the field cables to the Option Card and install the Option Card cover (not shown). Re-install the drive front cover and tighten the screws.