



Pressure Switch - Field Adjustable Installation and Maintenance Instructions



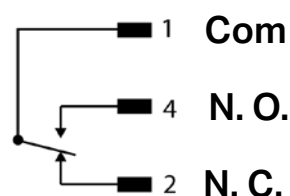
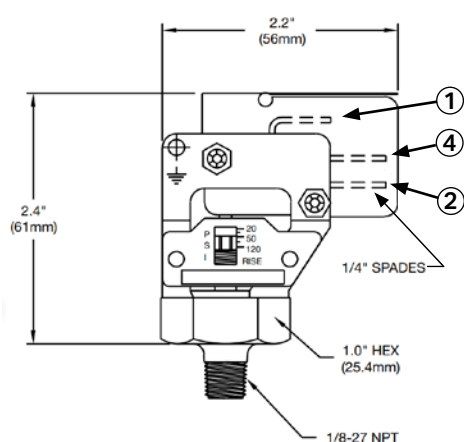
AchieVe low pressure switch is a precision electrical control device that monitors system pressure and activates when a predetermined set point is reached. These adjustable low pressure switches use proven snap-action technology with elastomer diaphragms to deliver reliable, instantaneous switching in pneumatic and hydraulic applications.

The switch maintains its state, with contacts either open or closed, until media pressure reaches the precise set point, then snaps decisively to a new state.

The S18 pressure switch delivers maximum functionality, making them ideal for applications where space is premium while maintaining full performance capabilities.



S18-1C



Installation

- To minimize the risk of injury, the switch enclosure must be selected according to the area classification and installed according to the required safety and electrical codes.
- Torque should always be applied to the Hex portion of the body, never to any other part of the body for it may alter the setpoint. It is recommended that Teflon® tape or other sealant be used on the threads prior to installing, to prevent leaks in the system.
- Operating temperature limits for the switches are -20 to +220 °F (-29 to +104 °C).
- Switch should be protected from excessive shock and vibration.

Cautions

- Do not exceed current or voltage limits
- The protection degree of the switch is only valid when the switch is installed in accordance with all safety and electrical codes and regulations.

Cleaning

- Never use high-pressure water to clean switch
- Never use aggressive solvents to wash switch

Maintenance

- All AchieVe pressure switches require little or no maintenance.
- When the switch is exposed to process media that may harden and /or build up in the pressure port, the switch should be removed and cleaned as required.
- If the switch does not function, only trained and skilled personnel should check on the wiring, power supply and/or mounting.
- If the problem cannot be solved, please contact Automation Direct Technical Support.

Setpoint Adjustment

The pressure switch operates as follows:

- Normally open contact will close when the pressure is raised from 0 psig to the setpoint. The reset point is then measured from the setpoint, reducing the pressure until the Normally Open contact opens.



Pressure Switch - Field Adjustable Installation and Maintenance Instructions

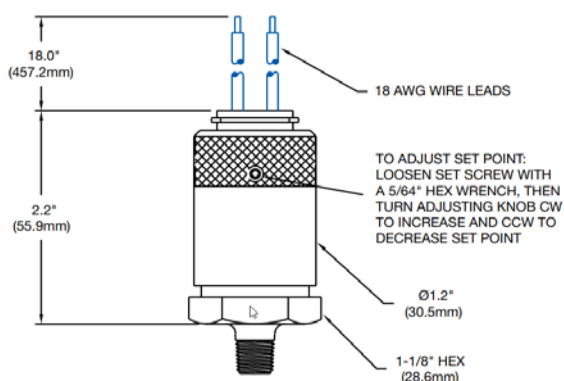


AchieVe® pressure switches are precision electrical control devices capable of monitoring system pressure, activating when a predetermined set point is reached. These adjustable pressure switches use proven snap-action technology with elastomer diaphragms to deliver reliable, instantaneous switching in pneumatic and hydraulic applications.

These pressure switches maintain their state, with contacts either open or closed, until media pressure reaches the precise set point, then snap decisively to a new state.



LPPS with 9.3mm DIN Connection



LPPS without 9.3mm DIN adaptor

Process/Electrical Connection		
P/N	Process Connection	Electrical Connection
LPPS18-1C-XXXXA	1/8"-27 NPT	Cable
LPPS18-1C-XXXXD		9.4mm DIN
LPPS18-1C-XXXXH		M12 4-pin
LPPS25-1C-XXXXA	1/4"-18 NPT	Cable
LPPS25-1C-XXXXD		9.4mm DIN
LPPS25-1C-XXXXH		M12 4-pin

Installation

- To minimize the risk of injury, the switch must be installed according to the required safety and electrical codes.
- Torque should always be applied to the hex portion of the body, never to any other part of the body, as it may alter the setpoint. It is recommended that Teflon tape or other media specific sealant be used on the threads prior to installing to prevent leaks in the system.
- Operating temperature limits for the switches are -20 to +220 °F (-29 to +104 °C).
- Switch should be protected from excessive shock and vibration.
- Once the setpoint is set the adjustment screw should be retightened.

Cautions

- Verify the setpoint adjustment set screw is tightened after making any setpoint adjustments.
- Do not exceed current or voltage limits.
- The protection degree of the switch is only valid when the switch is installed in accordance with all safety and local electrical codes and regulations.

Cleaning

- Never use high-pressure water to clean switch.
- Never use aggressive solvents to wash switch.

Maintenance

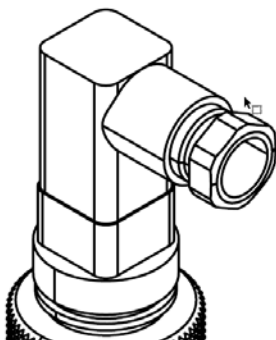
- All AchieVe pressure switches require little or no maintenance.
- Be sure the setpoint adjustment set screw is tightened properly after setpoint adjustments.
- When the switch is exposed to process media that may harden and /or build up in the pressure port, the switch should be removed and cleaned as required.
- If the switch does not function, only trained and skilled personnel should check on the wiring, power supply and/or mounting.
- If the problem cannot be solved, please contact Automation Direct Technical Support.

Setpoint Adjustment

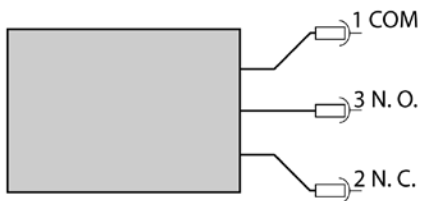
The AchieVe pressure switch has a field adjustable setpoint. To adjust the setpoint follow the instructions in the diagram above. The pressure switch operates as follows:

- Normally open contact will close when the pressure is raised from 0 psig to the setpoint. The reset point is then measured from the setpoint, reducing the pressure until the Normally Open contact opens.

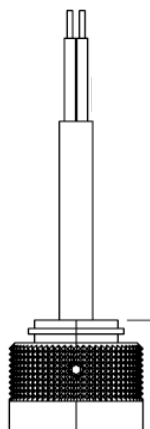
Wiring Diagrams



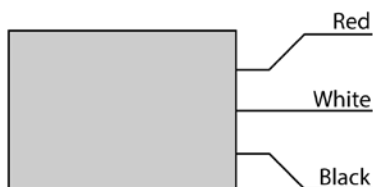
9.4mm DIN Connector



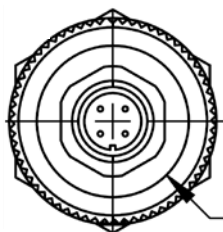
Pin	LPPS Models (ending in D)
1	Common
2	N.C.
3	N.O.



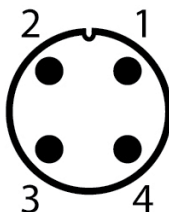
With integral cable



Wire Color	LPPS Models (ending in A)
White	COM
Black	N.O.
Red	N.C.
Green	Not Used



M12 Connector



M12 4-Pin Connector

Pin	LPPS Models (ending in H)	
1	Brown	COM
2	White	-
3	Blue	N.O.
4	Black	N.C.

Note: Wiring colors are based on AutomationDirect cable, p/n CD12L and CD12M 4-pin cable. (cables not included)