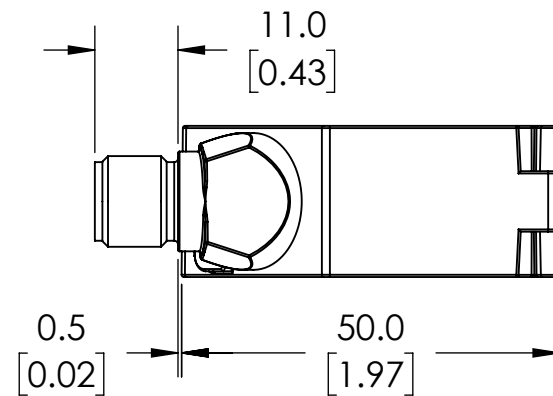
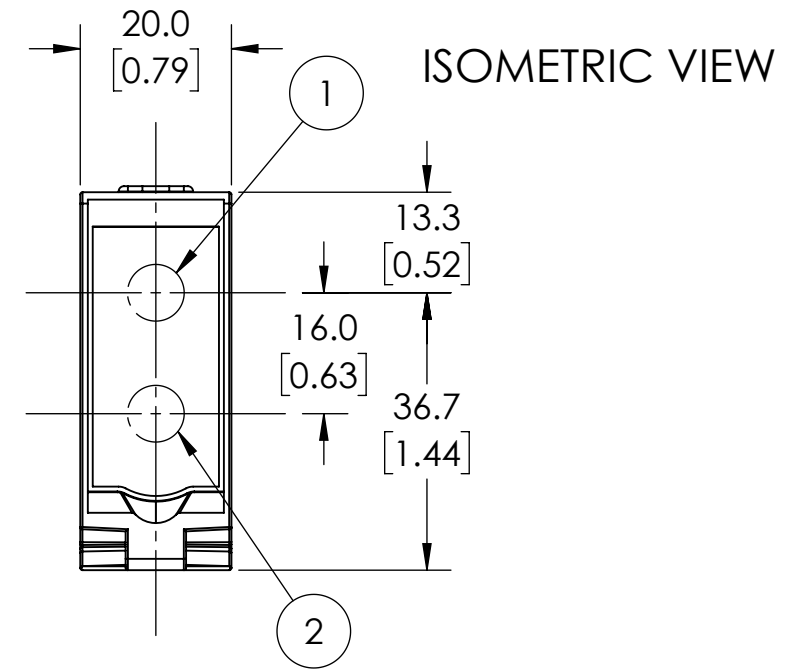
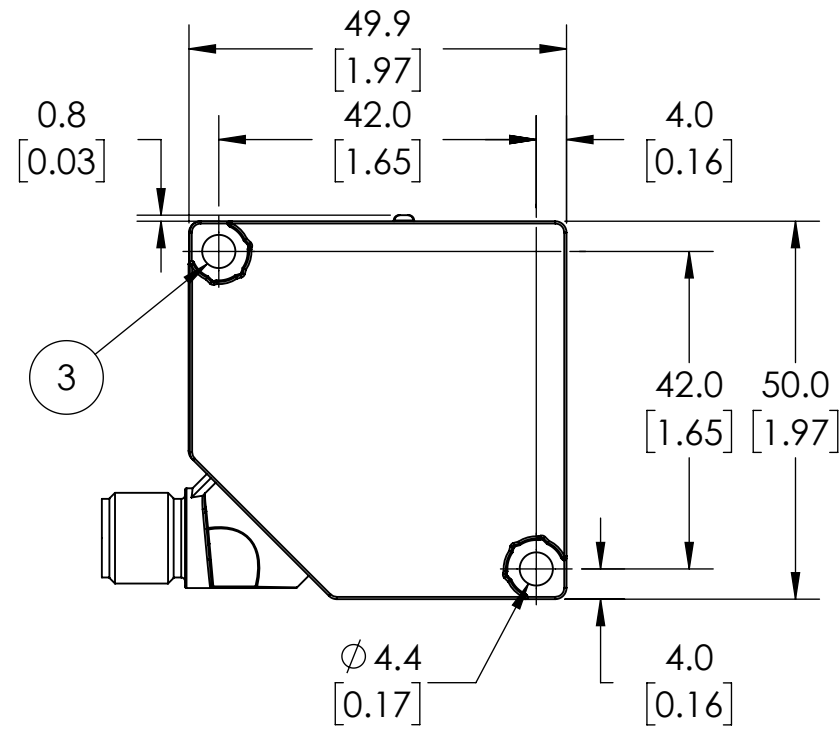
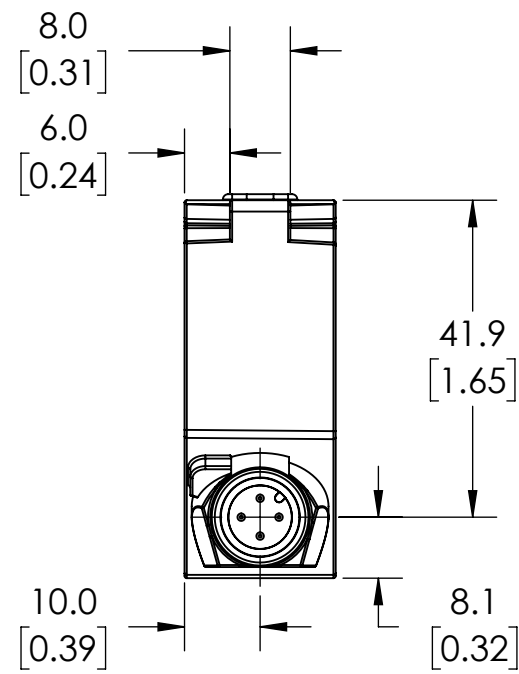
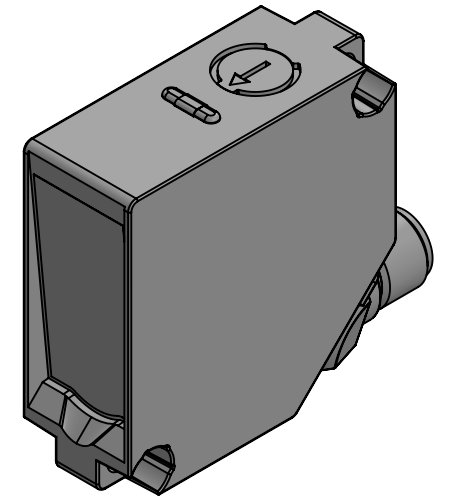
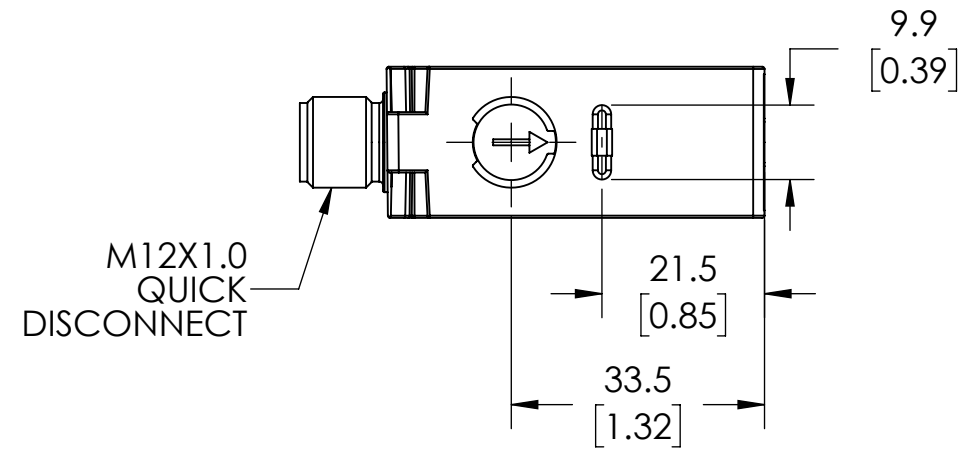


- 1 = TRANSMITTER DIODE
- 2 = RECEIVER DIODE
- 3 = WRENCH SIZE 7, SCREW M4 - 0.5 Nm



NOTES:

- 1. DIMENSIONS CAN BE CHANGED BY MANUFACTURER WITHOUT NOTICE.
- 2. DIMENSIONS DO NOT IMPLY TOLERANCE.

OPT2151

Units: mm [inches]  
Scale: Full

WENGLOR PHOTOELECTRIC SENSOR, SQUARE, DIFFUSE WITH BACKGROUND SUPPRESSION, BLUE LIGHT LIGHT EMISSION, 0-400MM SENSING DISTANCE, COMPLEMENTARY LIGHT-ON/DARK-ON, PNP, ADJUSTABLE, 4-WIRE, 4-PIN M12 QUICK-DISCONNECT