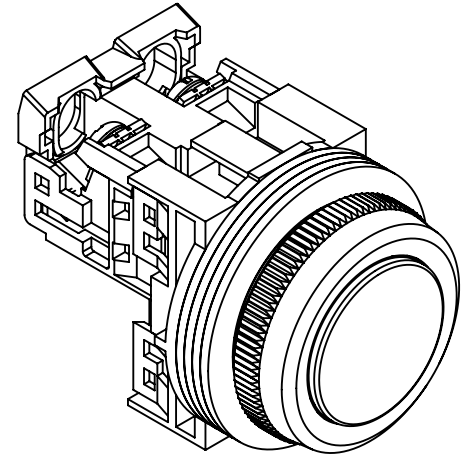
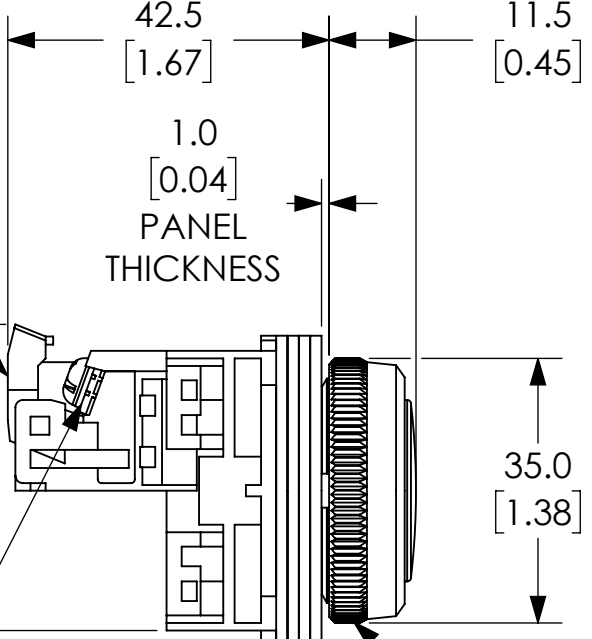


IF KEY WASHER OR LEGEND PLATE ARE NOT USED 4.8MM WIDE LOCATION HOLE NEED NOT BE CUT OUT



MOUNTING HOLES

TERMINAL COVER

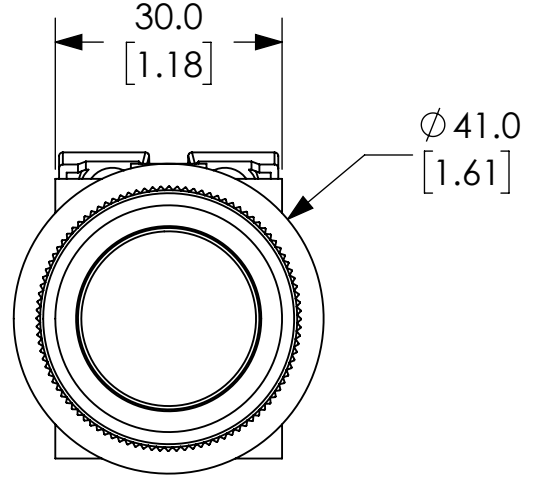


1.0 [0.04]
PANEL THICKNESS

LOCKING NUT

PACKING

M3.5 TERMINAL SCREW



AR30F0R-10GZC

Units: mm [inches]
Scale: Full

FLUSH ROUND HEAD,
MOMENTARY, GREEN, 1-NO

NOTES:

1. DIMENSIONS CAN BE CHANGED BY MANUFACTURER WITHOUT NOTICE.
2. DIMENSIONS DO NOT IMPLY TOLERANCE.