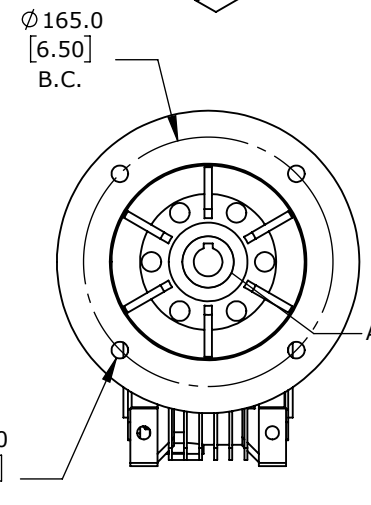
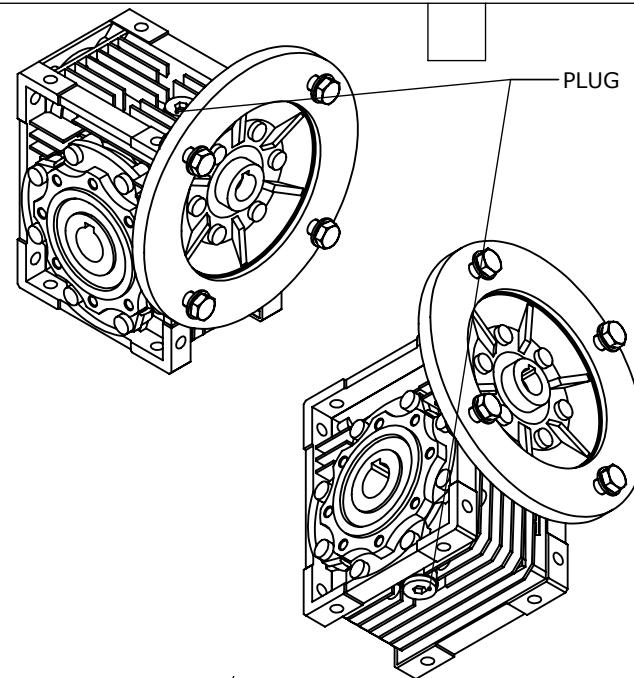


Ø 8.8
[0.35]
(TOP AND
BOTTOM)



HARDWARE INCLUDED	
TYPE	QTY
HEX HEAD SCREW M10-1.5 X 30mm	4
M10 WASHER	4
M10-1.5 HEX NUT	4
PLUG M16-1.5	2

IRONHORSE WORM GEARBOX: IEC-80B5 , 60:1

WGA-63M-060-80B5

AutomationDirect.com
1-800-633-0405



3rd
ANGLE

NOT TO
SCALE

PART DIMENSIONS MAY DIFFER SLIGHTLY
DUE TO MANUFACTURER'S VARIANCES

METRIC UNITS USED
FOR PART DESIGN

UNLESS OTHERWISE
SPECIFIED UNITS ARE:

mm
[inch]

LATEST VERSION
2/20/2025

SHEET 1 OF 1