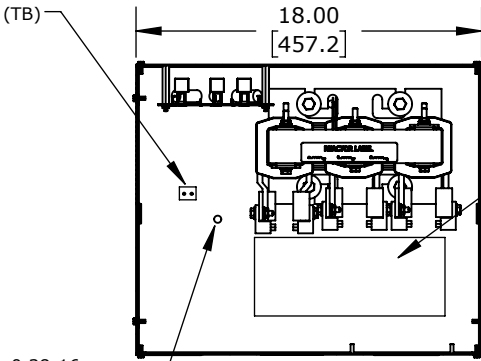


OPTIONAL  
THERMAL SWITCH  
TERMINAL BLOCK  
(TB)

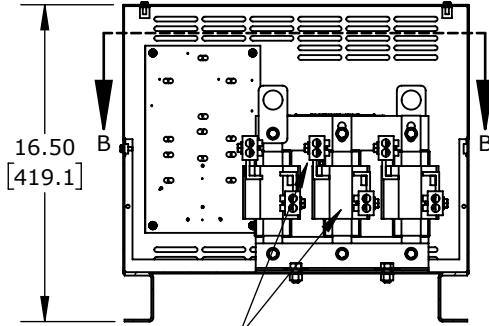
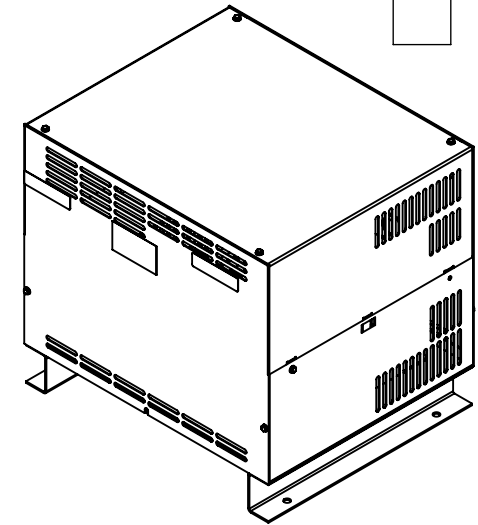
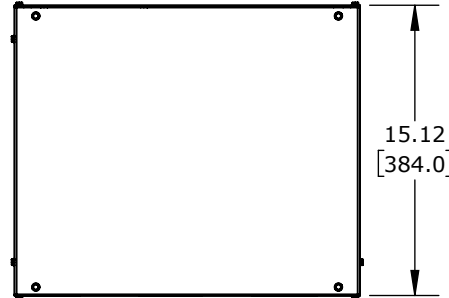


0.38-16,  
GROUND STUD

SECTION B-B

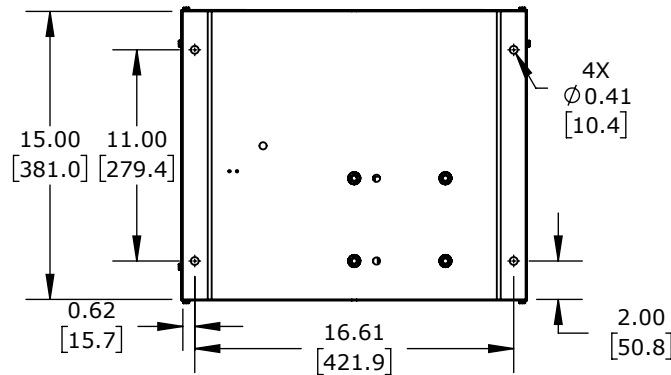
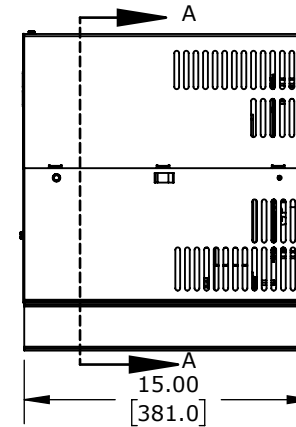
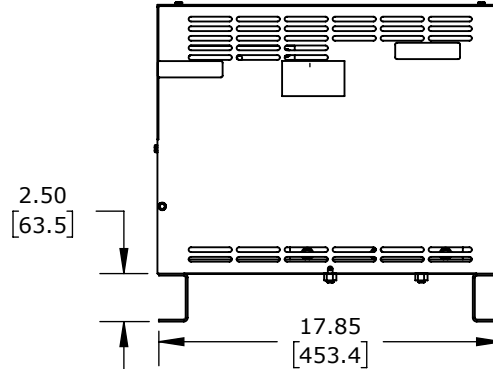
SUGGESTED  
CUSTOMER ENTRANCE  
(BOTTOM ENTRY)

SUGGESTED  
CUSTOMER ENTRANCE  
(SIDE ENTRY)



(CUSTOMER CONNECTIONS)  
MARKING ON COIL  
FOR REFERENCE ONLY

SECTION A-A



AUTOMATIONDIRECT VTF SERIES DRIVE OUTPUT FILTER, 208-600 VAC, 100HP AT 230 VAC, 200HP AT 460 VAC AND 250HP AT 575 VAC, UL TYPE 1, 3-PHASE, 250A, OUTPUT SIDE ONLY. FOR USE WITH MULTIPLE AC DRIVES

VTF-246-VYZ-N1

AutomationDirect.com  
1-800-633-0405



3rd  
ANGLE

NOT TO  
SCALE

PART DIMENSIONS MAY DIFFER SLIGHTLY  
DUE TO MANUFACTURER'S VARIANCES

METRIC UNITS USED  
FOR PART DESIGN

UNLESS OTHERWISE  
SPECIFIED UNITS ARE:

inch  
[mm]

LATEST VERSION  
2/13/2024

SHEET 1 OF 1