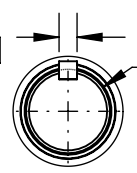
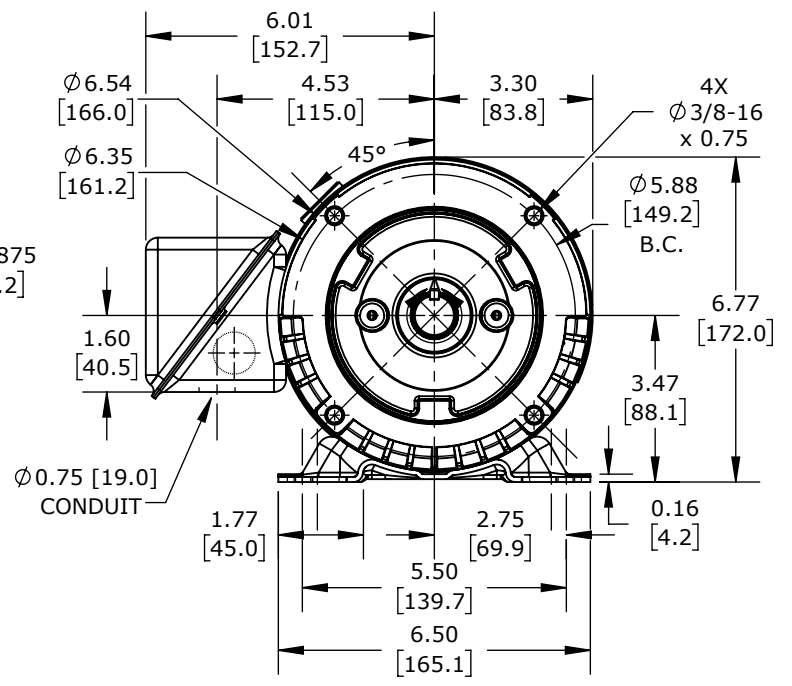


0.19 x 0.19  
x 1.42 KEY

0.19  
[4.8]



DETAIL A  
SCALE 2:1



U.S. MOTORS ACCU-TORQ PREMIUM EFFICIENCY AC INDUCTION MOTOR, HIGH-PERFORMANCE INVERTER DUTY, 1-1/2HP, 3-PHASE, 230/460 VAC, 1800RPM, TENV, NEMA 145TC FRAME, ROLLED STEEL, C-FACE/RIGID BASE MOUNT, AVTRON HS35A ENCODER INCLUDED

**UN32T2BC-HS35A**

AutomationDirect.com  
1-800-633-0405

	3rd ANGLE	NOT TO SCALE	PART DIMENSIONS MAY DIFFER SLIGHTLY DUE TO MANUFACTURER'S VARIANCES	INCH UNITS USED FOR PART DESIGN	UNLESS OTHERWISE SPECIFIED UNITS ARE:	inch [mm]	LATEST VERSION 8/27/2024	SHEET 1 OF 1
--	--------------	-----------------	--	------------------------------------	--	--------------	-----------------------------	--------------