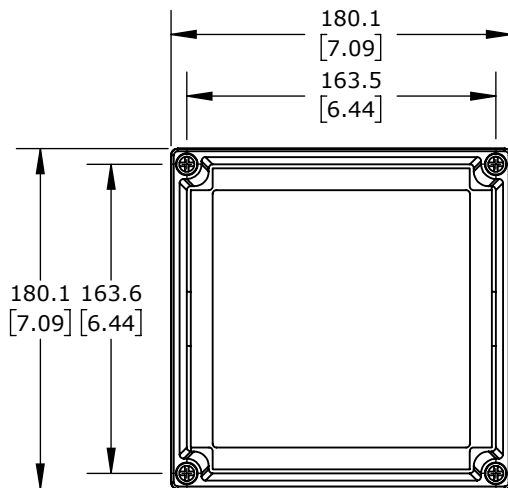
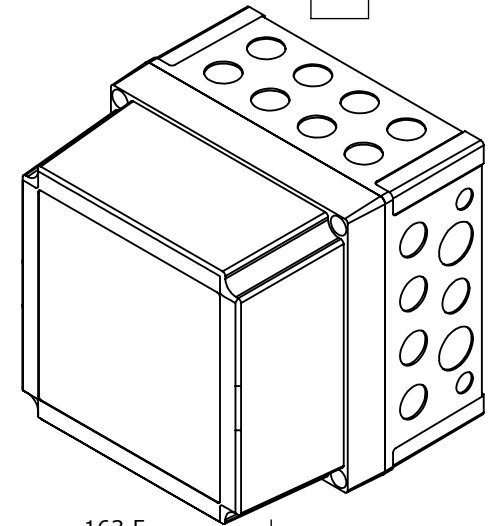
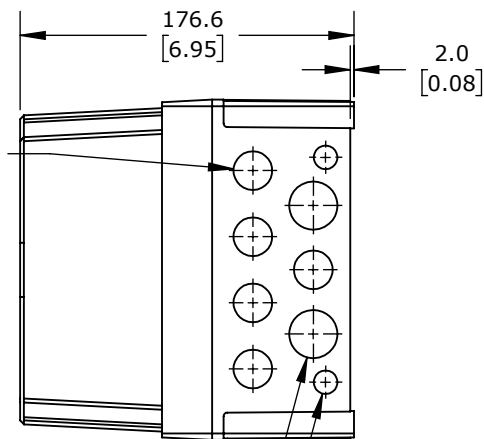


Ø 20.5
[0.81]
KNOCK-OUTS
(8X) TOP SIDE

ISOMETRIC VIEW

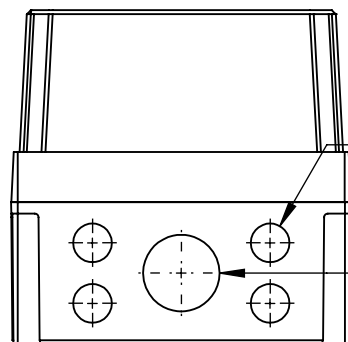
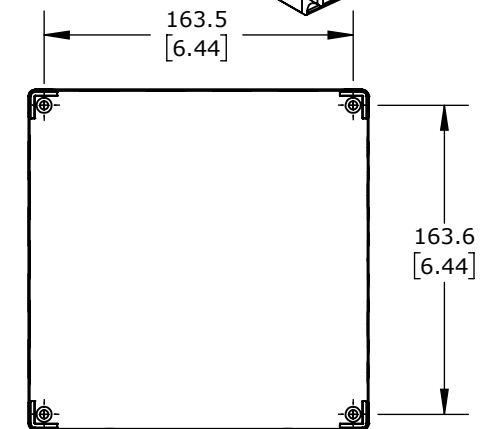


Ø 20.5
[0.81]
KNOCK-OUTS
(5X) RIGHT SIDE
(5X) LEFT SIDE



Ø 25.5
[1.00]
KNOCK-OUTS
(2X) LEFT SIDE
(2X) RIGHT SIDE

Ø 12.5
[0.49]
KNOCK-OUTS
(2X) LEFT SIDE
(2X) RIGHT SIDE



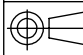
Ø 20.5
[0.81]
KNOCK-OUTS
(4X) BOTTOM SIDE

Ø 40.5
[1.59]
KNOCK-OUTS
(1X) BOTTOM SIDE

FIBOX MNX ENCLOSURES

ULPCM175175XG

AutomationDirect.com
1-800-633-0405

	3rd ANGLE	NOT TO SCALE	PART DIMENSIONS MAY DIFFER SLIGHTLY DUE TO MANUFACTURER'S VARIANCES	METRIC UNITS USED FOR PART DESIGN	UNLESS OTHERWISE SPECIFIED UNITS ARE:	mm [inch]	MODEL REV.	DRAWING DATE 10/24/2025	SHEET 1 OF 1
--	--------------	-----------------	--	--------------------------------------	--	--------------	---------------	----------------------------	--------------