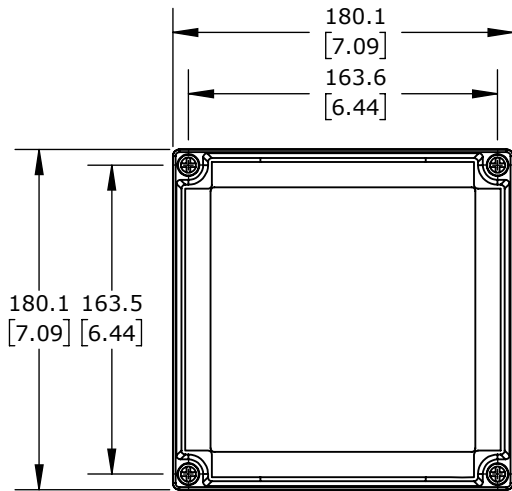
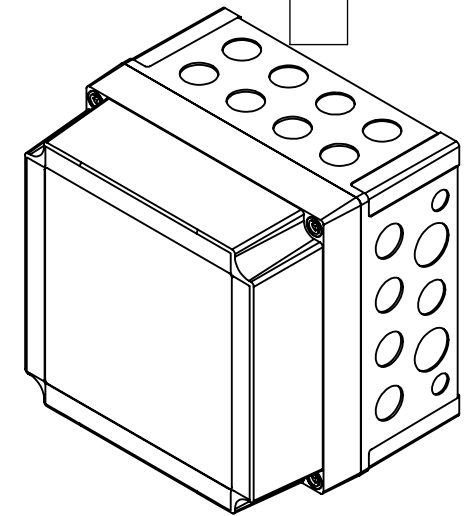
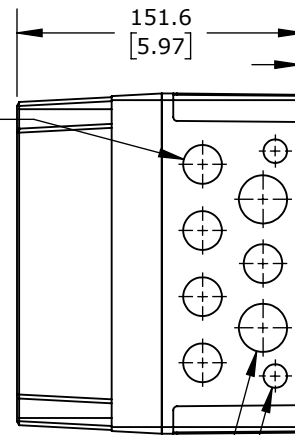


Ø 20.5
[0.81]
KNOCK-OUTS
(8X) TOP SIDE

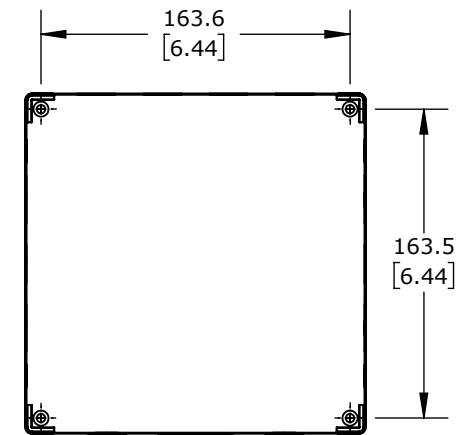
ISOMETRIC VIEW



Ø 20.5
[0.81]
KNOCK-OUTS
(5X) RIGHT SIDE
(5X) LEFT SIDE

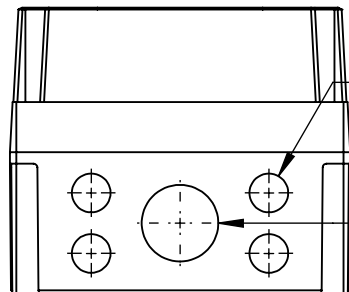


2.0
[0.08]



Ø 25.5
[1.00]
KNOCK-OUTS
(2X) LEFT SIDE
(2X) RIGHT SIDE

Ø 12.5
[0.49]
KNOCK-OUTS
(2X) LEFT SIDE
(2X) RIGHT SIDE



Ø 20.5
[0.81]
KNOCK-OUTS
(4X) BOTTOM SIDE

Ø 40.5
[1.59]
KNOCK-OUTS
(1X) BOTTOM SIDE

FIBOX MNX ENCLOSURES

ULPCM175150XG

AutomationDirect.com
1-800-633-0405

3rd ANGLE	NOT TO SCALE	PART DIMENSIONS MAY DIFFER SLIGHTLY DUE TO MANUFACTURER'S VARIANCES	METRIC UNITS USED FOR PART DESIGN	UNLESS OTHERWISE SPECIFIED UNITS ARE: mm [inch]	MODEL REV. --	DRAWING DATE 10/24/2025	SHEET 1 OF 1
--------------	-----------------	--	--------------------------------------	--	-------------------------	----------------------------	--------------