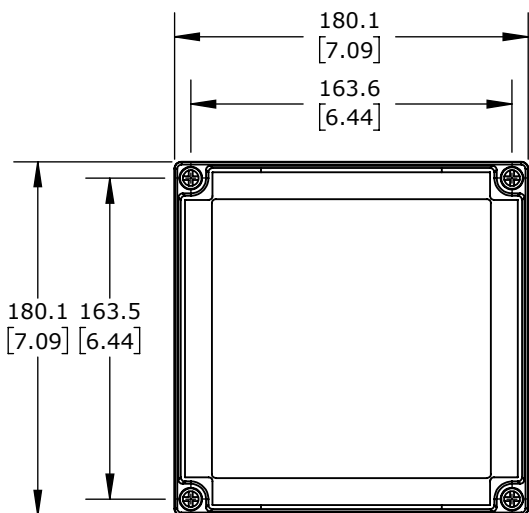
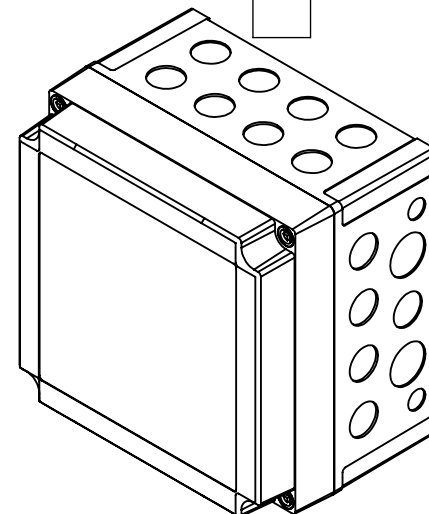
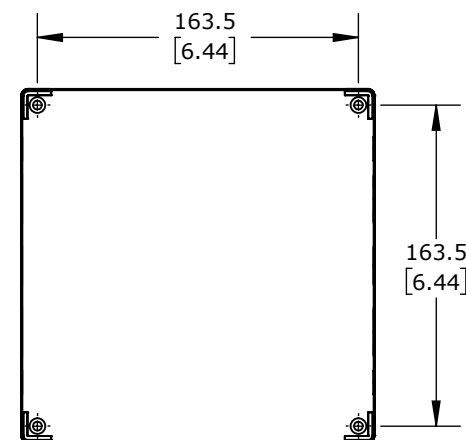
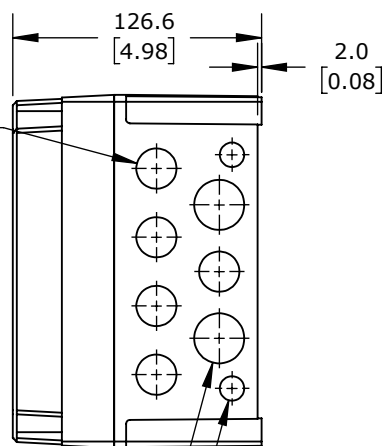


$\phi 20.5$
 [0.81]
 KNOCK-OUTS
 (8X) TOP SIDE

ISIOMETRIC VIEW

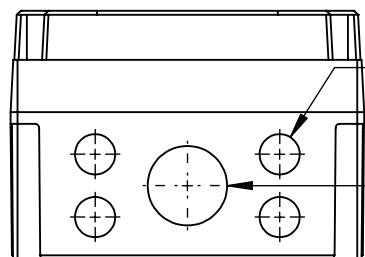


$\phi 20.5$
 [0.81]
 KNOCK-OUTS
 (5X) RIGHT SIDE
 (5X) LEFT SIDE



$\phi 25.5$
 [1.00]
 KNOCK-OUTS
 (2X) RIGHT SIDE
 (2X) LEFT SIDE

$\phi 12.5$
 [0.49]
 KNOCK-OUTS
 (2X) RIGHT SIDE
 (2X) LEFT SIDE



$\phi 20.5$
 [0.81]
 KNOCK-OUTS
 (4X) BOTTOM SIDE

$\phi 40.5$
 [1.59]
 KNOCK-OUT
 (1X) BOTTOM SIDE

FIBOX MNX ENCLOSURES

ULPCM175125XT

AutomationDirect.com
1-800-633-0405

3rd ANGLE	NOT TO SCALE	PART DIMENSIONS MAY DIFFER SLIGHTLY DUE TO MANUFACTURER'S VARIANCES	METRIC UNITS USED FOR PART DESIGN	UNLESS OTHERWISE SPECIFIED UNITS ARE:	mm [inch]	MODEL REV.	DRAWING DATE 10/24/2025	SHEET 1 OF 1
--------------	-----------------	--	--------------------------------------	--	--------------	---------------	----------------------------	--------------