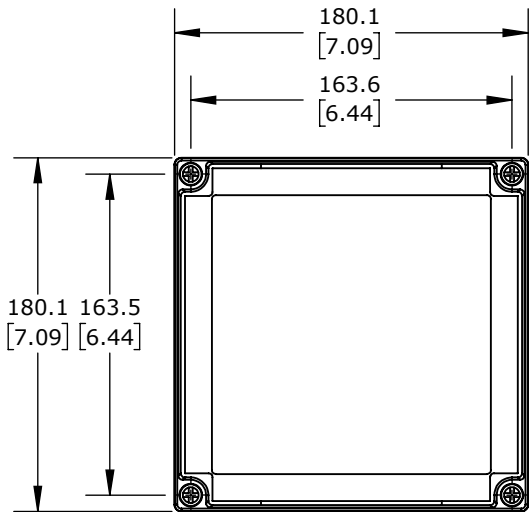
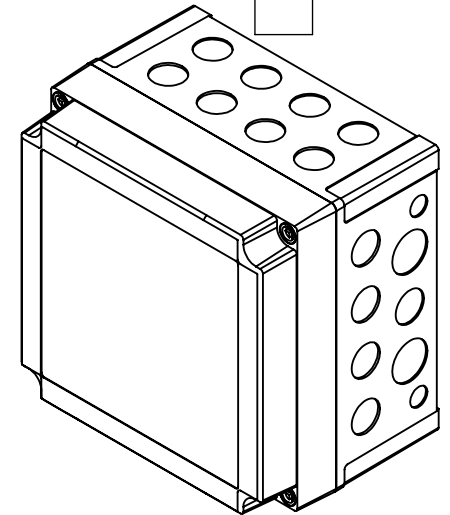
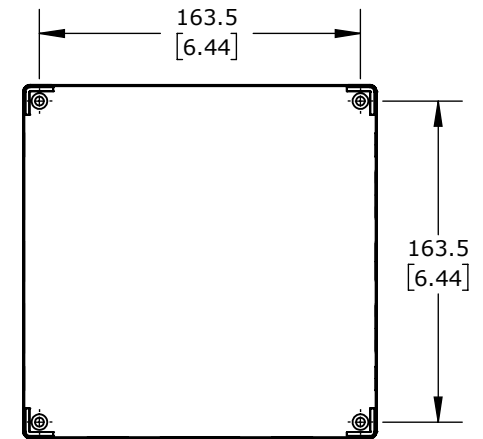
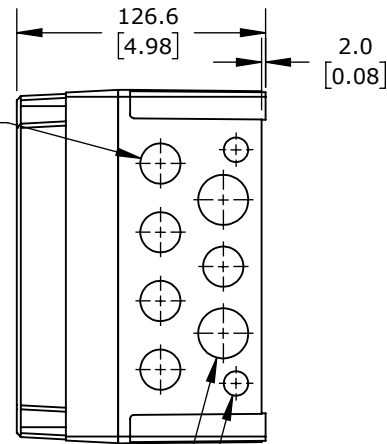


$\phi 20.5$
 [0.81]
 KNOCK-OUTS
 (8X) TOP SIDE

ISOMETRIC VIEW

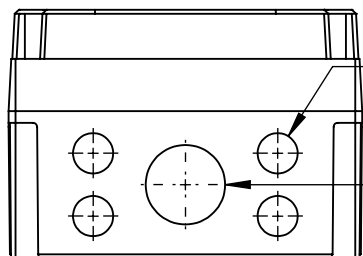


$\phi 20.5$
 [0.81]
 KNOCK-OUTS
 (5X) RIGHT SIDE
 (5X) LEFT SIDE



$\phi 25.5$
 [1.00]
 KNOCK-OUTS
 (2X) RIGHT SIDE
 (2X) LEFT SIDE

$\phi 12.5$
 [0.49]
 KNOCK-OUTS
 (2X) RIGHT SIDE
 (2X) LEFT SIDE



$\phi 20.5$
 [0.81]
 KNOCK-OUTS
 (4X) BOTTOM SIDE
 $\phi 40.5$
 [1.59]
 KNOCK-OUT
 (1X) BOTTOM SIDE

FIBOX MNX ENCLOSURES

ULPCM175125XG

AutomationDirect.com
1-800-633-0405



3rd
ANGLE

NOT TO
SCALE

PART DIMENSIONS MAY DIFFER SLIGHTLY
DUE TO MANUFACTURER'S VARIANCES

METRIC UNITS USED
FOR PART DESIGN

UNLESS OTHERWISE
SPECIFIED UNITS ARE: **mm**
[inch]

MODEL
REV.

--

DRAWING DATE
10/24/2025

SHEET 1 OF 1