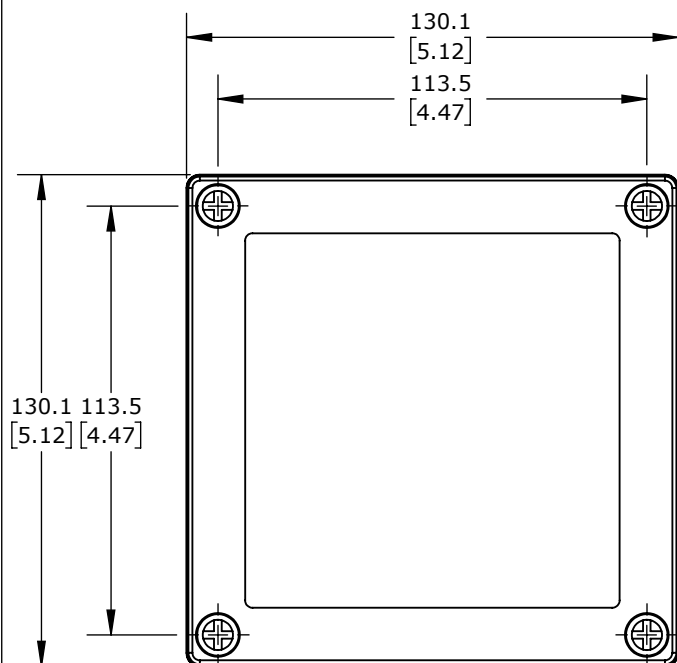
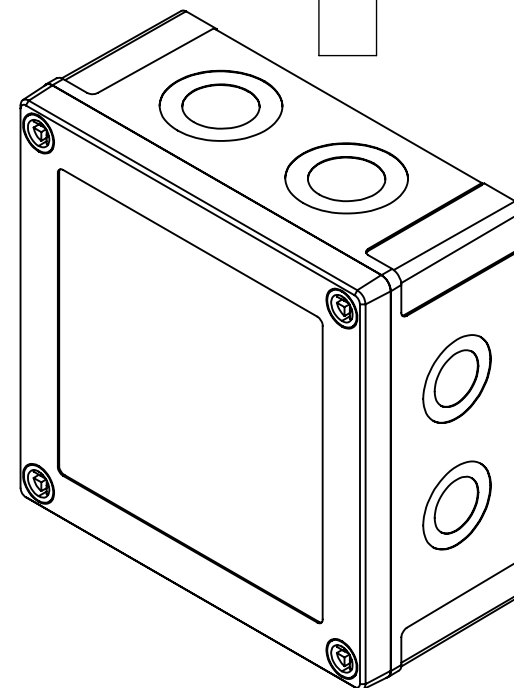


Ø 20.5  
[0.81]  
KNOCK-OUTS  
(2X) TOP &  
(2X) BOTTOM

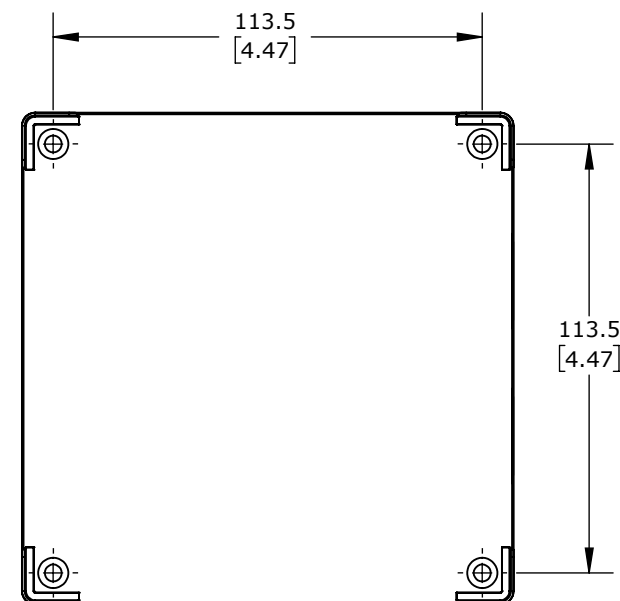
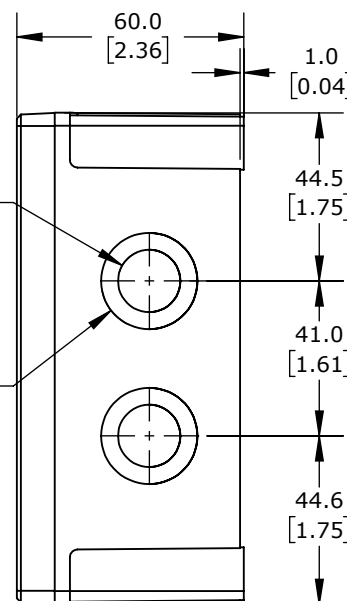
Ø 32.5  
[1.28]  
KNOCK-OUTS  
(2X) TOP &  
(2X) BOTTOM

ISOMETRIC VIEW



Ø 16.5  
[0.65]  
KNOCK-OUTS  
(2X) LEFT SIDE  
(2X) RIGHT SIDE

Ø 25.5  
[1.00]  
KNOCK-OUTS  
(2X) LEFT SIDE  
(2X) RIGHT SIDE



FIBOX MNX ENCLOSURES

ULPCM12560G

AutomationDirect.com  
1-800-633-0405

3rd ANGLE	NOT TO SCALE	PART DIMENSIONS MAY DIFFER SLIGHTLY DUE TO MANUFACTURER'S VARIANCES	METRIC UNITS USED FOR PART DESIGN	UNLESS OTHERWISE SPECIFIED UNITS ARE: <b>mm</b> [inch]	MODEL REV. <b>--</b>	DRAWING DATE 10/23/2025	SHEET 1 OF 1
--------------	-----------------	--	--------------------------------------	--	-------------------------	----------------------------	--------------