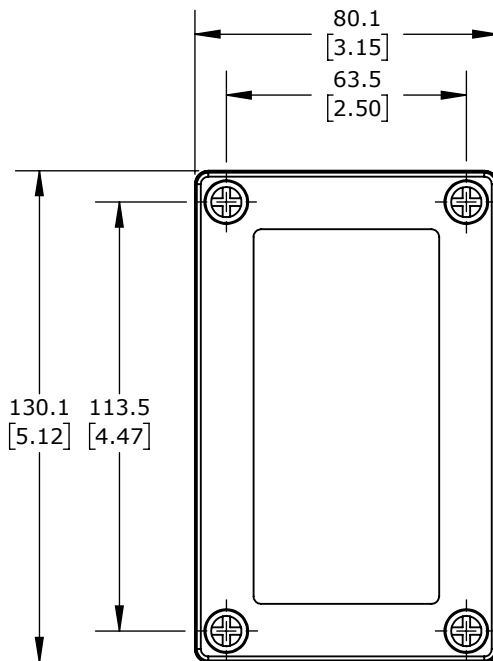
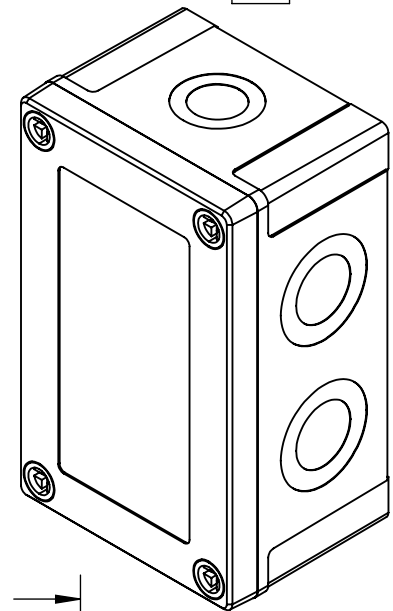


Ø 16.5  
[0.65]  
KNOCK-OUTS  
(1X) TOP &  
(1X) BOTTOM

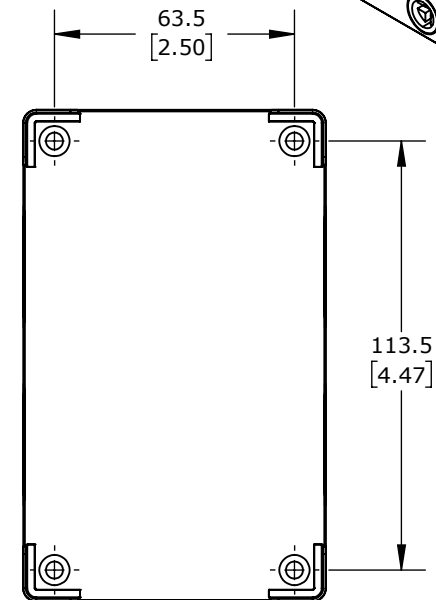
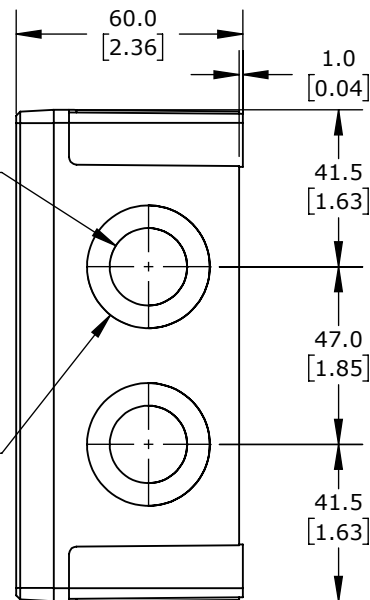
Ø 25.5  
[1.00]  
KNOCK-OUTS  
(1X) TOP &  
(1X) BOTTOM

ISOMETRIC VIEW



Ø 20.5  
[0.81]  
KNOCK-OUTS  
(2X) LEFT SIDE  
(2X) RIGHT SIDE

Ø 32.5  
[1.28]  
KNOCK-OUTS  
(2X) LEFT SIDE  
(2X) RIGHT SIDE



FIBOX MNX ENCLOSURES

ULPCM10060T

AutomationDirect.com  
1-800-633-0405



3rd  
ANGLE

NOT TO  
SCALE

PART DIMENSIONS MAY DIFFER SLIGHTLY  
DUE TO MANUFACTURER'S VARIANCES

METRIC UNITS USED  
FOR PART DESIGN

UNLESS OTHERWISE  
SPECIFIED UNITS ARE: **mm**  
[inch]

MODEL  
REV. --

DRAWING DATE  
10/22/2025

SHEET 1 OF 1