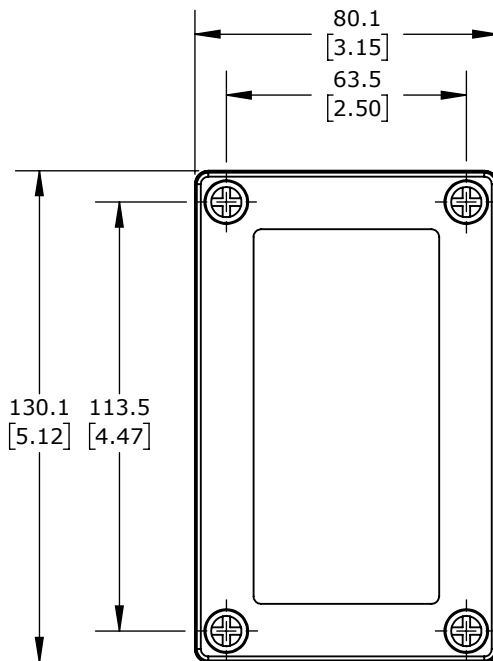
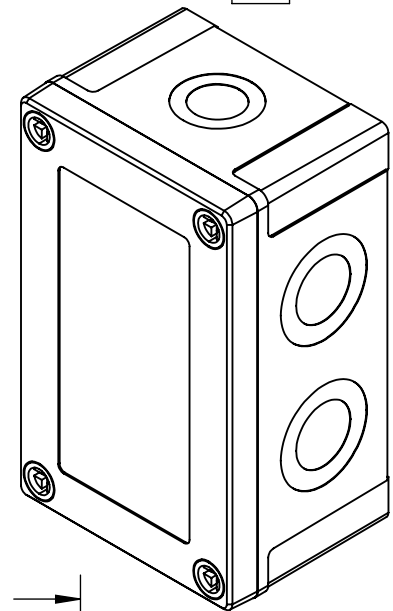


Ø 16.5
[0.65]
KNOCK-OUTS
(1X) TOP &
(1X) BOTTOM

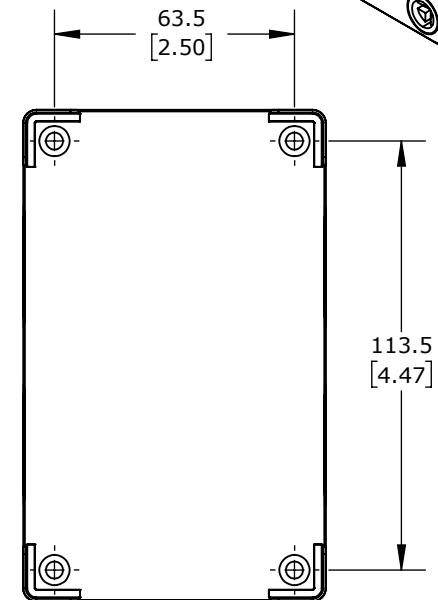
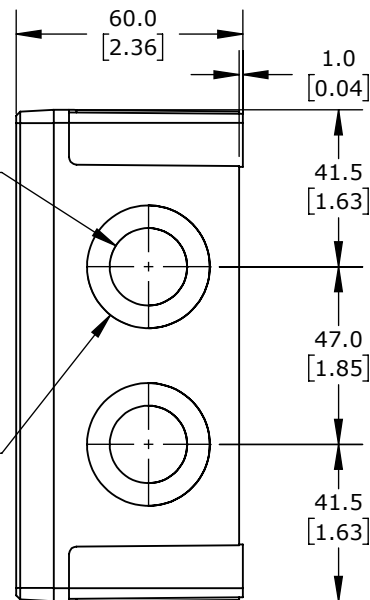
Ø 25.5
[1.00]
KNOCK-OUTS
(1X) TOP &
(1X) BOTTOM

ISOMETRIC VIEW



Ø 20.5
[0.81]
KNOCK-OUTS
(2X) LEFT SIDE
(2X) RIGHT SIDE

Ø 32.5
[1.28]
KNOCK-OUTS
(2X) LEFT SIDE
(2X) RIGHT SIDE



FIBOX MNX ENCLOSURES

ULPCM10060G

AutomationDirect.com
1-800-633-0405



3rd
ANGLE

NOT TO
SCALE

PART DIMENSIONS MAY DIFFER SLIGHTLY
DUE TO MANUFACTURER'S VARIANCES

METRIC UNITS USED
FOR PART DESIGN

UNLESS OTHERWISE
SPECIFIED UNITS ARE: **mm**
[inch]

MODEL
REV. --

DRAWING DATE
10/22/2025

SHEET 1 OF 1