

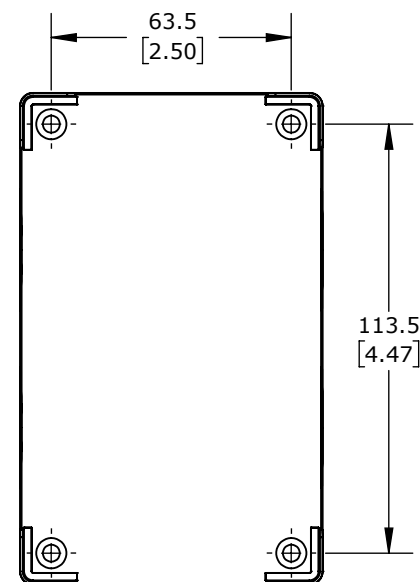
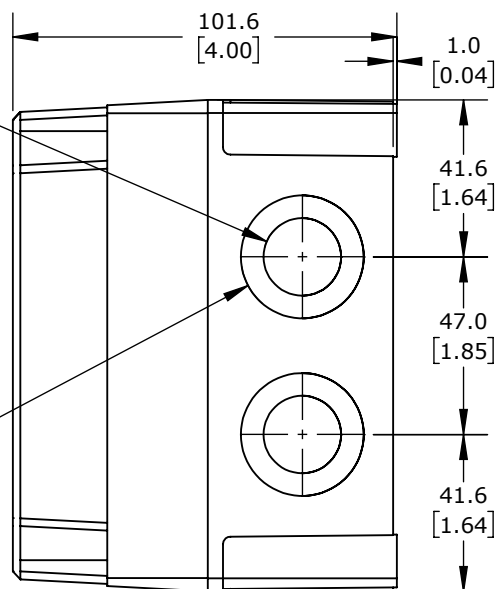
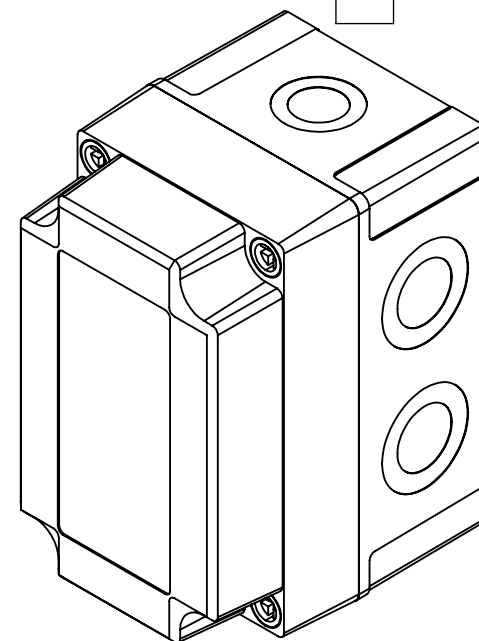
KNOCK-OUTS
(1X) TOP &
(1X) BOTTOM

KNOCK-OUTS
(1X) TOP &
(1X) BOTTOM

$\phi 20.5$
[0.81]
KNOCK-OUTS
(2X) LEFT SIDE
(2X) RIGHT SIDE

$\phi 32.5$
[1.28]
KNOCK-OUTS
(2X) LEFT SIDE
(2X) RIGHT SIDE

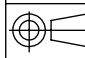
ISOMETRIC VIEW



FIBOX MNX ENCLOSURES

ULPCM100100G

AutomationDirect.com
1-800-633-0405

 3rd ANGLE	NOT TO SCALE	PART DIMENSIONS MAY DIFFER SLIGHTLY DUE TO MANUFACTURER'S VARIANCES	METRIC UNITS USED FOR PART DESIGN	UNLESS OTHERWISE SPECIFIED UNITS ARE: mm [inch]	MODEL REV. --	DRAWING DATE 10/23/2025	SHEET 1 OF 1
---	-----------------	--	--------------------------------------	--	------------------	----------------------------	--------------