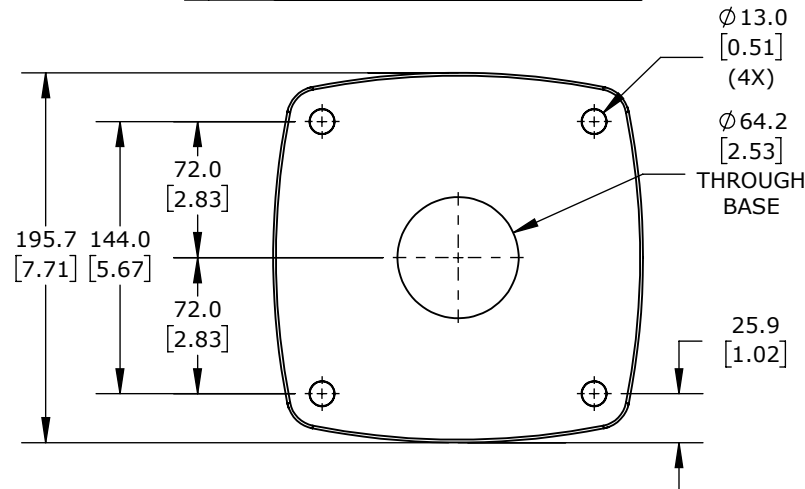
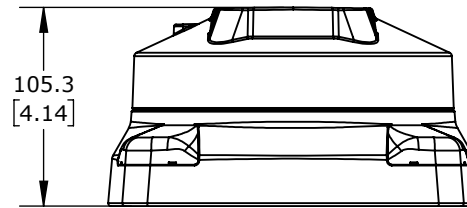


ISOMETRIC VIEW



TEKNOKOL SUSPENSION ARM FITTING, STRAIGHT TOP-MOUNT SWIVEL BASE, 310 DEGREES MOVEMENT RANGE, ALUMINUM, RAL 7035 LIGHT GRAY. FOR USE WITH TK120 SUSPENSION ARM PROFILE.

TK120.610

AutomationDirect.com
1-800-633-0405



3rd
ANGLE

NOT TO
SCALE

PART DIMENSIONS MAY DIFFER SLIGHTLY
DUE TO MANUFACTURER'S VARIANCES

METRIC UNITS USED
FOR PART DESIGN

UNLESS OTHERWISE
SPECIFIED UNITS ARE:

mm
[inch]

LATEST VERSION
8/30/2024

SHEET 1 OF 1