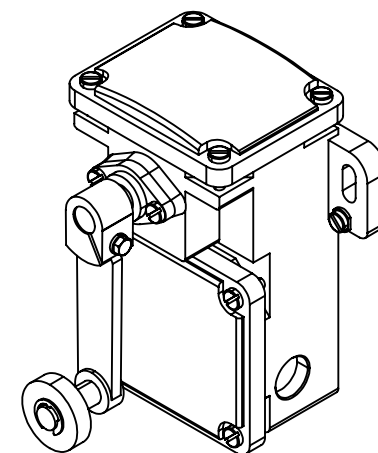
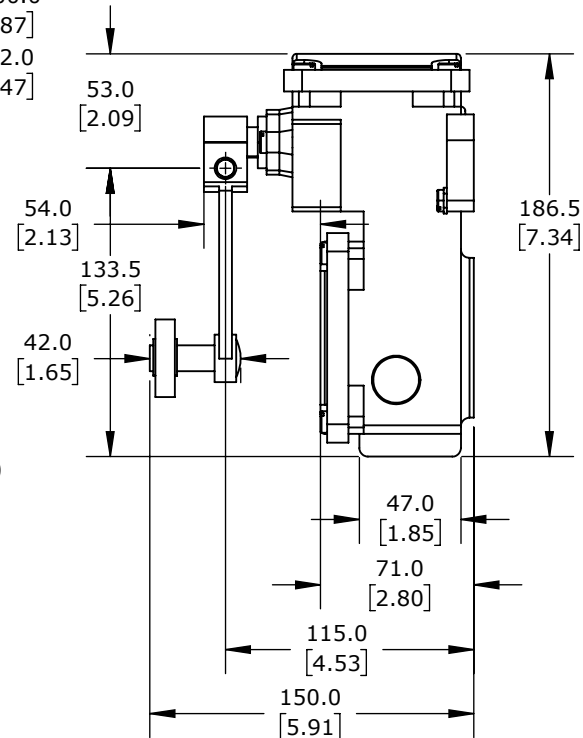
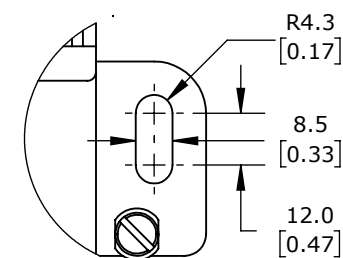




Technical drawing of the front view of a mechanical component. The drawing shows a central vertical shaft with a circular flange at the bottom. The housing has a rectangular base with four mounting holes. Dimensions are given in millimeters with tolerances in brackets. Key dimensions include: overall width 146.0 [5.75], overall height 103.0 [4.06], and various radii (R200.0 [7.87], R12.0 [0.47]). A circular feature at the bottom has a diameter of 36.0 [1.42]. A section line A-A is indicated on the right side.



ISOMETRIC VIEW



DETAIL A
SCALE 2 : 3.5

TD250-02Z

AutomationDirect.com
1-800-633-0405



3rd
ANGLE

NOT TO
SCALE

PART DIMENSIONS MAY DIFFER SLIGHTLY
DUE TO MANUFACTURER'S VARIANCES

METRIC UNITS USED
FOR PART DESIGN

UNLESS OTHERWISE
SPECIFIED UNITS ARE:

mm
[inch]

LATEST VERSION
9/3/2024

SHEET 1 OF 1