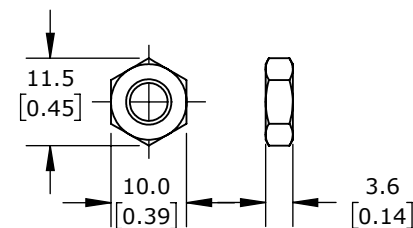
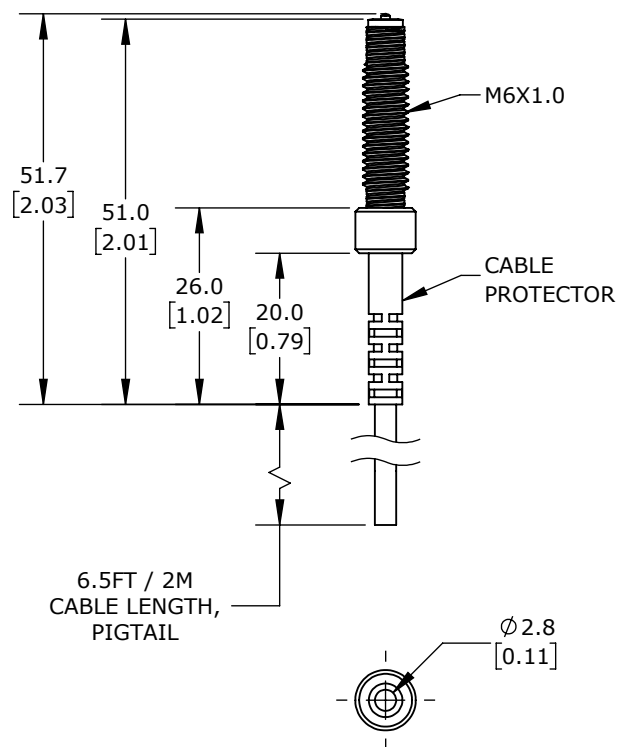


ISOMETRIC VIEW



M6X1.0 HEX NUT
(2 REQUIRED)

METROL LIMIT SWITCH, STOPPER BOLT, 6MM DIAMETER, THREADED, 1MM PITCH, 31.7MM LENGTH, 3.4MM FLAT HEAD, 1.5MM PLUNGER, 2N CONTACT FORCE, N.O. CONTACT(S), 6.5FT/2M CABLE LENGTH, PIGTAIL.

STS060PA

AutomationDirect.com
1-800-633-0405



3rd
ANGLE

NOT TO
SCALE

PART DIMENSIONS MAY DIFFER SLIGHTLY
DUE TO MANUFACTURER'S VARIANCES

METRIC UNITS USED
FOR PART DESIGN

UNLESS OTHERWISE
SPECIFIED UNITS ARE:

mm
[inch]

LATEST VERSION
7/17/2024

SHEET 1 OF 1