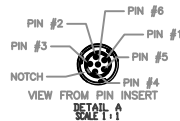
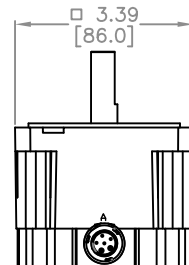


18AWG SHIELDED CABLE:
BELDEN #9418

CONNECTOR:
BULGIN #PXP4010/06S/6065
SOCKET: SA3347



PIN OUT CONNECTION		
PIN #	COLOR	PHASE
1	RED	A+
2	WHITE	A-
3	GREEN	B+
4	BLACK	B-
5	GROUND	GROUND
6	N/A	N/A



NOTES:

1. DIMENSIONS CAN BE CHANGED BY MANUFACTURER WITHOUT NOTICE.
2. DIMENSIONS DO NOT IMPLY TOLERANCE.

STP-MTR-34066W

Units: inches [mm]

Scale: Full

SureStep STEPPER MOTOR, NEMA 34
FRAME, IP65, 2.8A, 434 OZ-IN