

□ $\phi 6.5 \nabla 5.8$,
 $\phi 3.7$ THRU ALL (6X)

□ $\phi 11.3 \nabla 5.8$,
 $\phi 6.8$ THRU ALL (3X)

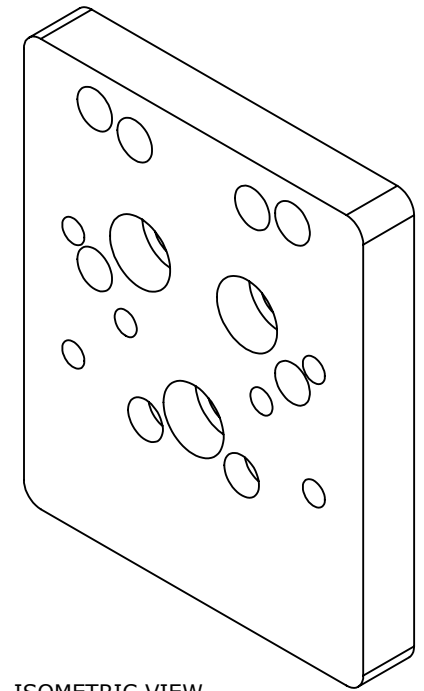
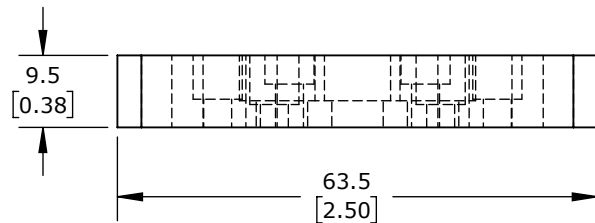
R3.2
 [0.13]
 TYP.

76.2
 [3.00]
 69.9
 [2.75]
 68.6
 [2.70]
 50.8
 [2.00]
 48.1
 [1.89]
 43.9
 [1.73]
 38.1
 [1.50]
 28.8
 [1.13]
 28.1
 [1.11]
 24.3
 [0.96]
 0
 [0.00]

$\phi 4.1$
 [0.16]
 (6X)

□ $\phi 6.5 \nabla 6.5$,
 $\phi 3.7$ THRU ALL (2X)

0
 [0.00]
 9.3
 [0.36]
 13.3
 [0.52]
 19.1
 [0.75]
 20.8
 [0.82]
 21.8
 [0.86]
 22.8
 [0.90]
 31.8
 [1.25]
 40.8
 [1.60]
 41.8
 [1.64]
 42.8
 [1.68]
 44.5
 [1.75]
 50.3
 [1.98]
 54.3
 [2.14]
 63.5
 [2.50]



ISOMETRIC VIEW

SWIVELINK STANDARD SERIES METRIC MOUNTING PLATE, FOR USE WITH BALL BASES SLM-1 OR SLM-1-40 OR SLM-1XS AND COGNEX INSIGHT CAMERAS.

SLM-523-C-I2000

AutomationDirect.com
 1-800-633-0405



3rd
 ANGLE

NOT TO
 SCALE

PART DIMENSIONS MAY DIFFER SLIGHTLY
 DUE TO MANUFACTURER'S VARIANCES

METRIC UNITS USED
 FOR PART DESIGN

UNLESS OTHERWISE
 SPECIFIED UNITS ARE:

mm
[inch]

LATEST VERSION
 3/29/2023

SHEET 1 OF 1