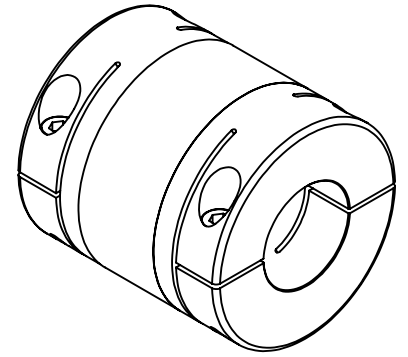
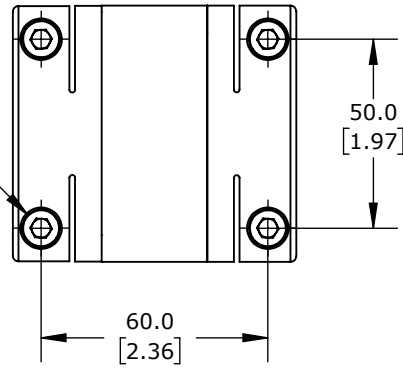
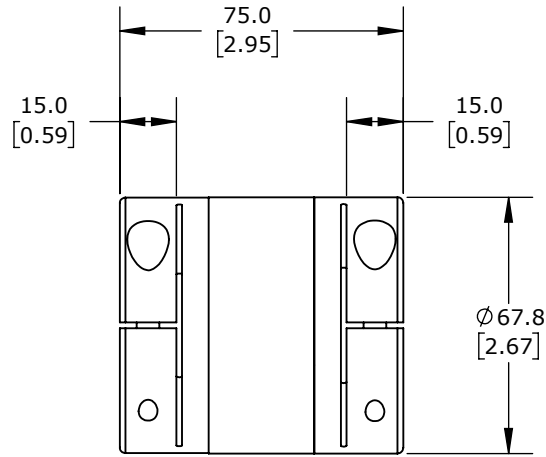
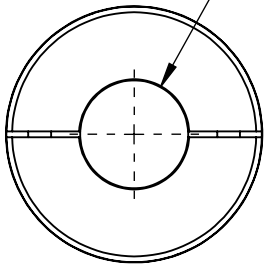


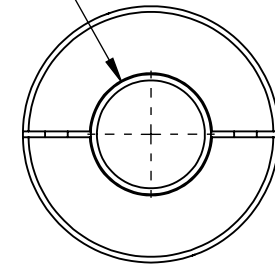
M6-1.0 X 25MM  
SHCS X4



Ø 28.6  
[1.13]  
BORE



Ø 31.8  
[1.25]  
BORE




BORE SIZES ARE RATED FOR  
h7 SHAFT TOLERANCE

**SUNG-IL MACHINERY DRIVE COUPLING**

**SHR-68C-28.575-31.75**

AutomationDirect.com  
1-800-633-0405

 3rd ANGLE	NOT TO SCALE	PART DIMENSIONS MAY DIFFER SLIGHTLY DUE TO MANUFACTURER'S VARIANCES	METRIC UNITS USED FOR PART DESIGN	UNLESS OTHERWISE SPECIFIED UNITS ARE: <b>mm</b> [inch]	MODEL REV. --	DRAWING DATE 2/4/2026	SHEET 1 OF 1
---	-----------------	--	--------------------------------------	---	------------------	--------------------------	--------------