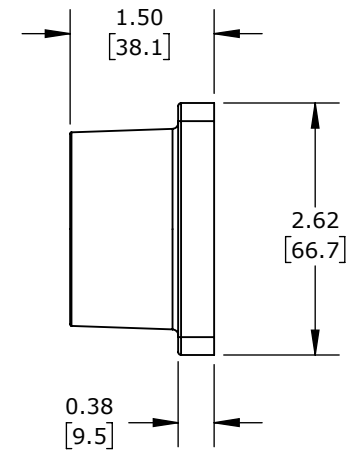
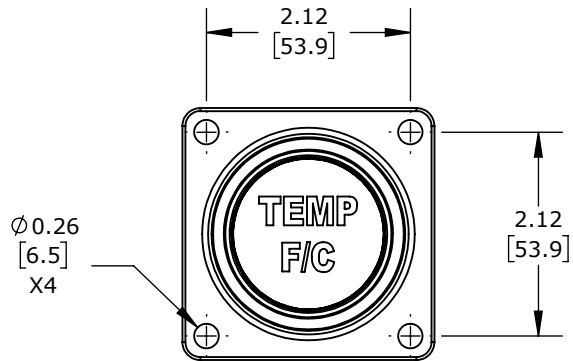
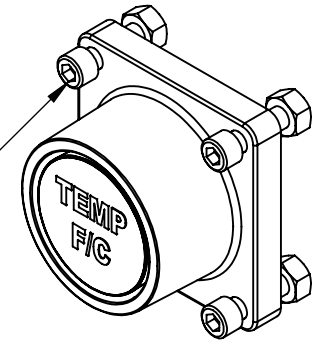


(4) 1/4-20X1 SHCS, (4)  
1/4-20 NUTS AND O-RING



FOR USE WITH CITO STACKFLOW VALVES BODY INLET.  
40-220 DEG F GAUGE AND BK-9100 BOLT KIT INCLUDED.

**CITO TEMPERATURE END CAP**

**SF-9220-K**

AutomationDirect.com  
1-800-633-0405



3rd  
ANGLE

NOT TO  
SCALE

PART DIMENSIONS MAY DIFFER SLIGHTLY  
DUE TO MANUFACTURER'S VARIANCES

INCH UNITS USED FOR  
PART DESIGN

UNLESS OTHERWISE  
SPECIFIED UNITS ARE:

**inch**  
**[mm]**

LATEST VERSION  
9/18/2024

SHEET 1 OF 1