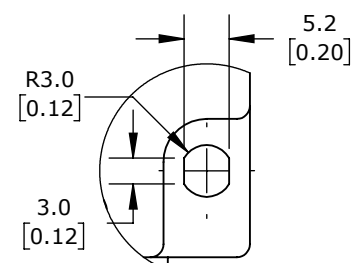


ISOMETRIC VIEW



DETAIL A
SCALE 2 : 1.75
(2X)

COMEPI SAFETY SWITCH, CABLE-PULL INTERLOCK, WITH RESET, 25M MAXIMUM PULL CABLE LENGTH, (2) N.C. SAFETY OUTPUT(S), (1) N.O. MONITORING OUTPUT(S), DIE-CAST ALUMINUM BODY, THERMOPLASTIC HEAD, (1) 1/2IN NPT CABLE ENTRY.

SBM2K9900X12

AutomationDirect.com
1-800-633-0405



3rd
ANGLE

NOT TO
SCALE

PART DIMENSIONS MAY DIFFER SLIGHTLY
DUE TO MANUFACTURER'S VARIANCES

METRIC UNITS USED
FOR PART DESIGN

UNLESS OTHERWISE
SPECIFIED UNITS ARE:

mm
[inch]

LATEST VERSION
5/25/2023

SHEET 1 OF 1