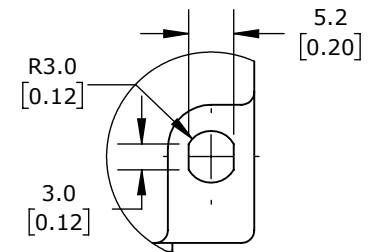


ISOMETRIC VIEW



DETAIL A  
SCALE 2 : 1.75  
(2X)

COMEPI SAFETY SWITCH, CABLE-PULL INTERLOCK, WITH RESET, 25M MAXIMUM PULL CABLE LENGTH, (1) N.C. SAFETY OUTPUT(S), (1) N.O. MONITORING OUTPUT(S), DIE-CAST ALUMINUM BODY, THERMOPLASTIC HEAD, (1) 1/2IN NPT CABLE ENTRY.

**SBM2K9900X11**

AutomationDirect.com  
1-800-633-0405



3rd  
ANGLE

NOT TO  
SCALE

PART DIMENSIONS MAY DIFFER SLIGHTLY  
DUE TO MANUFACTURER'S VARIANCES

METRIC UNITS USED  
FOR PART DESIGN

UNLESS OTHERWISE  
SPECIFIED UNITS ARE:

**mm**  
[inch]

LATEST VERSION  
5/25/2023

SHEET 1 OF 1