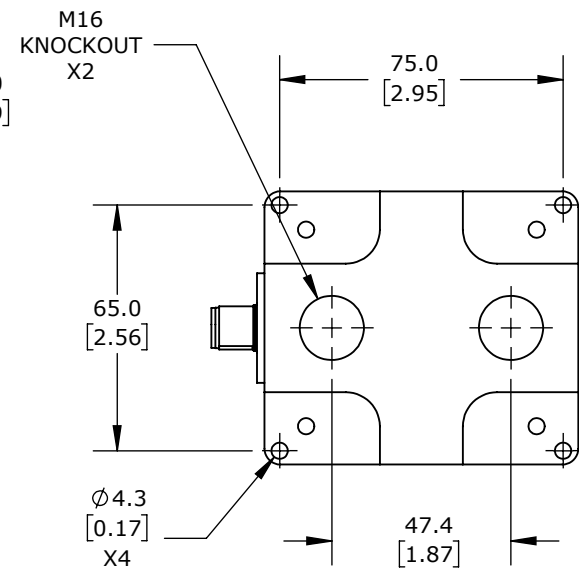
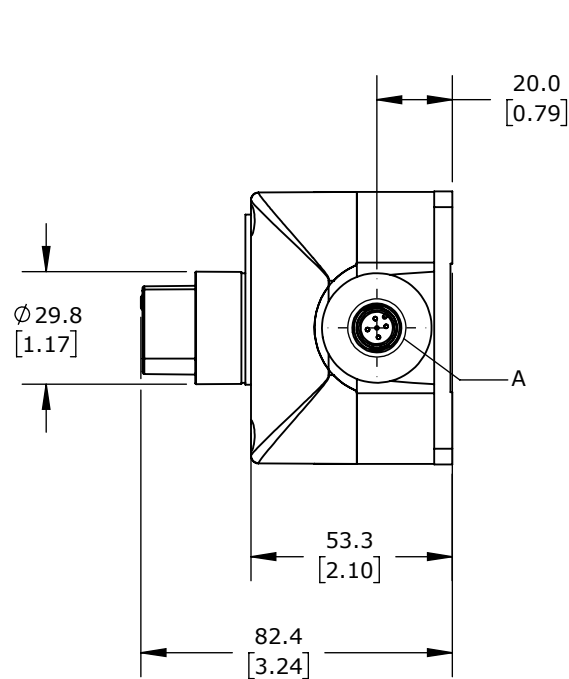
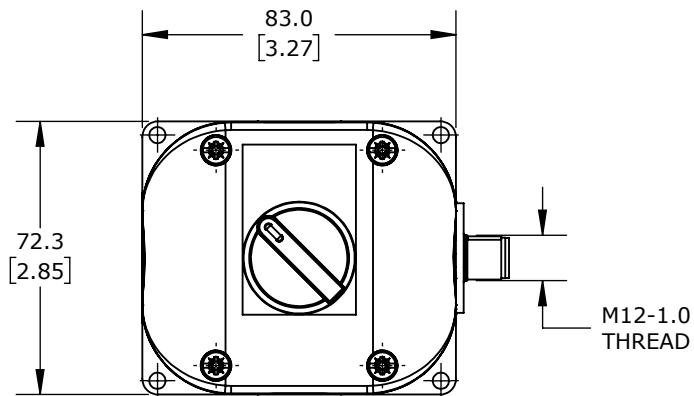


DETAIL A  
SCALE 1 : 1  
PINOUT DETAIL



(1) SELECTOR SWITCH, KNOB, 2-POSITION, BLACK, MAINTAINED,  
(1) N.O. CONTACT(s). REQUIRES 5-PIN FEMALE M12 CABLE.

## COMEPI CONTROL STATION

SB114-051-G-M

AutomationDirect.com  
1-800-633-0405



3rd  
ANGLE

NOT TO  
SCALE

PART DIMENSIONS MAY DIFFER SLIGHTLY  
DUE TO MANUFACTURER'S VARIANCES

METRIC UNITS USED  
FOR PART DESIGN

UNLESS OTHERWISE  
SPECIFIED UNITS ARE:

mm  
[inch]

LATEST VERSION  
2/6/2025

SHEET 1 OF 1