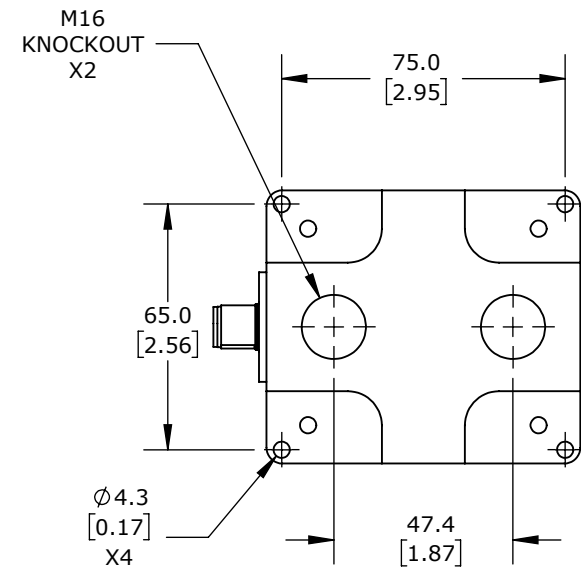
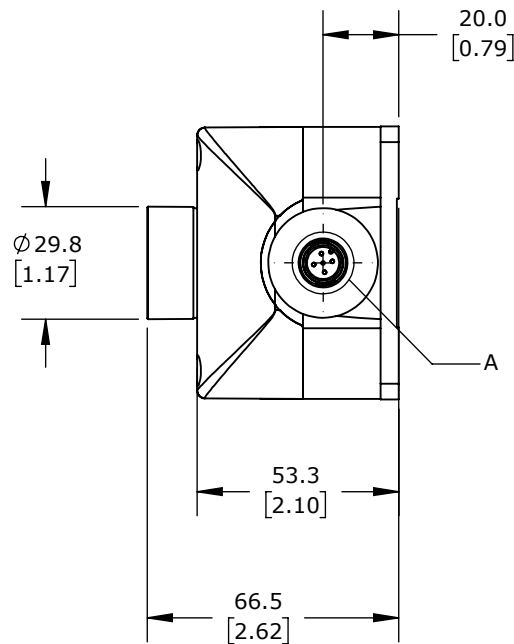
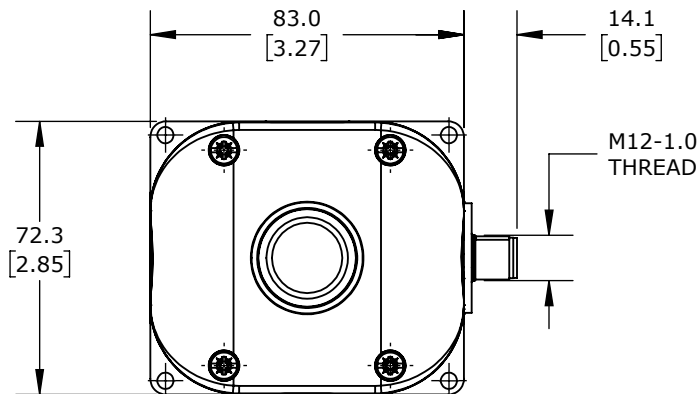


DETAIL A
SCALE 1 : 1
PINOUT DETAIL



(1) PUSHBUTTON, WHITE, MOMENTARY, (1) N.O.
CONTACT(s), OPERATOR TEXT START. REQUIRES 5-PIN
FEMALE M12 CABLE.

COMEPI CONTROL STATION

SB114-011-G-M

AutomationDirect.com
1-800-633-0405



3rd
ANGLE

NOT TO
SCALE

PART DIMENSIONS MAY DIFFER SLIGHTLY
DUE TO MANUFACTURER'S VARIANCES

METRIC UNITS USED
FOR PART DESIGN

UNLESS OTHERWISE
SPECIFIED UNITS ARE:

mm
[inch]

LATEST VERSION
2/6/2025

SHEET 1 OF 1