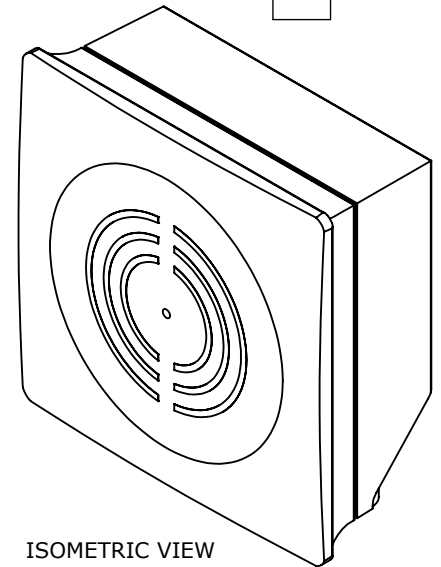
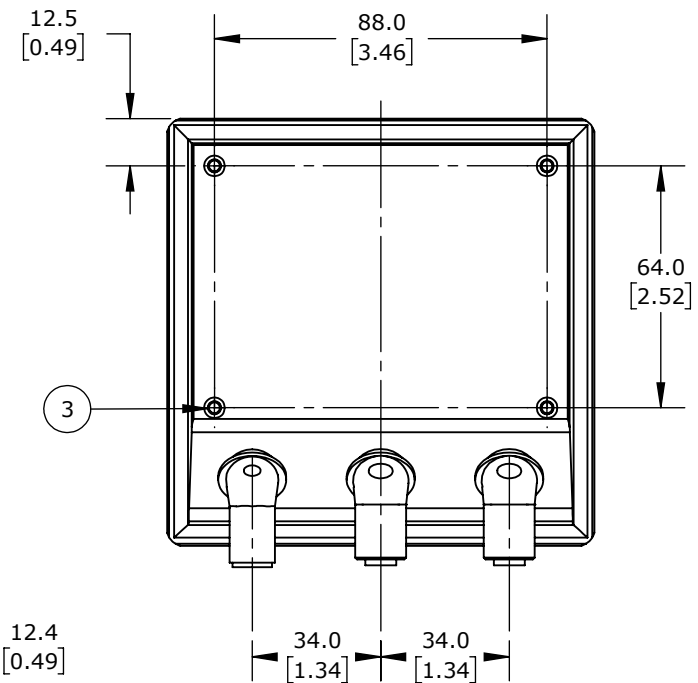
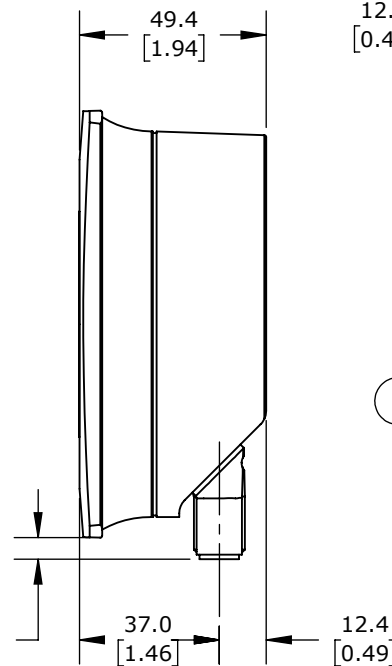
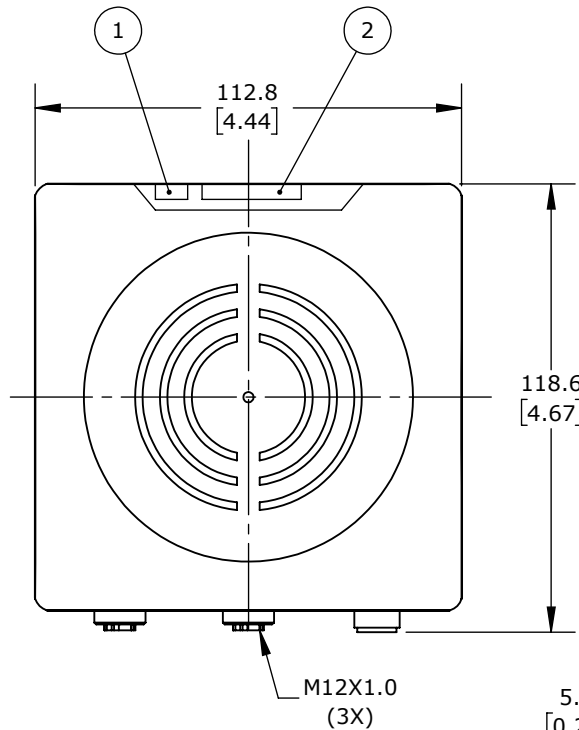


- 1.) LED OPERATING STATUS
- 2.) LED BAR DISPLAY FIELDBUS INTERFACE
- 3.) MOUNTING THREAD M4 MAX. INSERTION DEPTH 15MM



ISOMETRIC VIEW



AUTOMATIONDIRECT RFID READ-WRITE MODULE, RECTANGULAR, HF COMMUNICATION, 13.56 MHZ, 600MM READ-WRITE DISTANCE, (2) 5-PIN M12 D-CODED AND (1) 5-PIN M12 QUICK-DISCONNECT PORT(S), TCP/IP AND ETHERNET/IP, 113 X 118.5 X 50MM BODY, IP67.

**RFID-SA-HF-EIP**

AutomationDirect.com  
1-800-633-0405



3rd  
ANGLE

NOT TO  
SCALE

PART DIMENSIONS MAY DIFFER SLIGHTLY  
DUE TO MANUFACTURER'S VARIANCES

METRIC UNITS USED  
FOR PART DESIGN

UNLESS OTHERWISE  
SPECIFIED UNITS ARE:

**mm**  
[inch]

LATEST VERSION  
11/2/2022

SHEET 1 OF 1