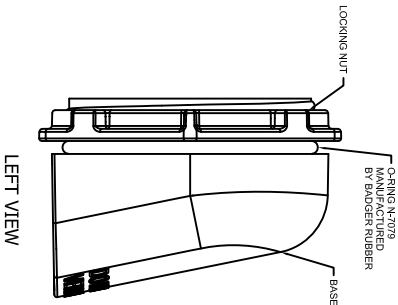
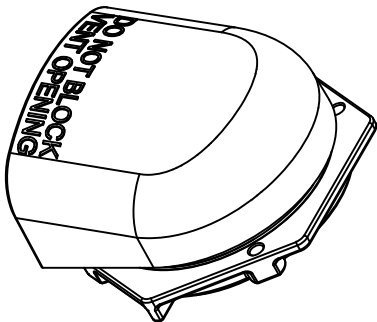
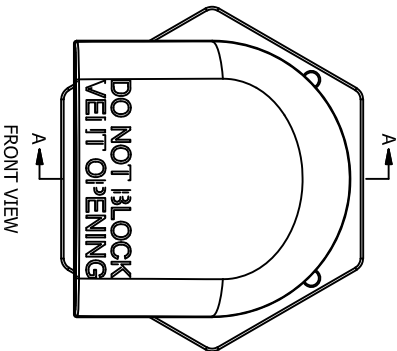


TOP VIEW

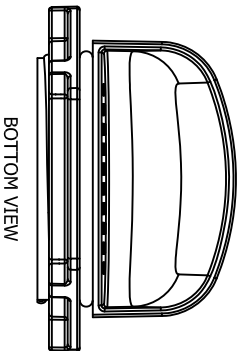
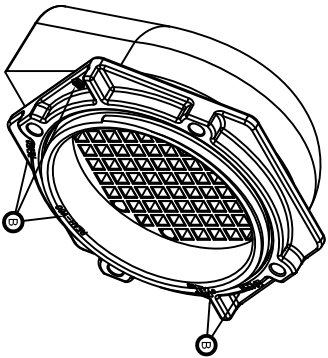
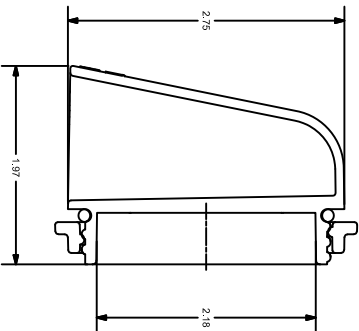


LEFT VIEW



FRONT VIEW

SECTION A-A



BOTTOM VIEW

CONDITIONS OF ACCEPTABILITY:

1. THESE DEVICES ARE FOR "FOR USE ON A FLAT SURFACE OF A TYPE 1, 2 AND/OR 3R ENCLOSURE"
2. A "2-1/2 INCH (63.5mm) MAX" OPENING SHALL BE DRILLED INTO THE ENCLOSURE WALL FOR INSTALLATION OF THE VENT
3. A MAXIMUM ENCLOSURE WALL THICKNESS OF 0.188 IN. THICK SHALL BE USED
4. THE DRILLED OPENING SHALL BE CLEAN AND FREE OF BURRS AND DEBRIS IN ORDER FOR THE VENT TO SIT FLUSH AGAINST THE ENCLOSURE WALL
5. THERE SHOULD BE SUFFICIENT ROOM TO PROPERLY TIGHTEN THE LOCKING NUT WHEN INSTALLING IN AN ENCLOSURE (12-18 IN. IS RECOMMENDED)
6. THE VENT SIDE OF THE VENT RING SHALL BEING ALLOWED TO BE IN CONTACT WITH THE INNER ENCLOSURE WALL
7. THE FLAT SIDE OF VENT RING NOT SHALL PRESS AGAINST THE INNER ENCLOSURE WALL

STAHLIN ENCLOSURE VENT, 60MM, POLYCARBONATE.



3rd
ANGLE
NOT TO
SCALE

PART DIMENSIONS MAY DIFFER SLIGHTLY
DUE TO MANUFACTURER'S VARIANCES

METRIC UNITS USED
FOR PART DESIGN

UNLESS OTHERWISE
SPECIFIED UNITS ARE:

inch
[mm]

LATEST VERSION
1/27/2023

SHEET 1 OF 1

REV60

Automa tionDirect.com
1-800-633-0405