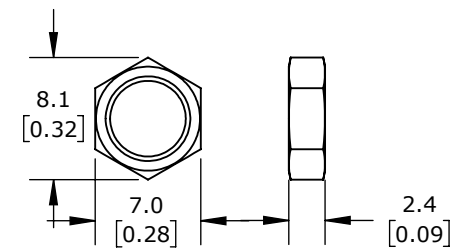


ISOMETRIC VIEW



M5X0.5 HEX NUT  
(2 REQUIRED)

METROL LIMIT SWITCH, PRECISION TOUCH, 5MM DIAMETER, THREADED, 0.5MM PITCH, 25MM LENGTH, 3MM FLAT HEAD, 1.5MM PLUNGER, 0.8N CONTACT FORCE, N.C. CONTACT(S), 6.5FT/2M CABLE LENGTH, PIGTAIL.

**PTP5M3CB-B**

AutomationDirect.com  
1-800-633-0405



3rd  
ANGLE

NOT TO  
SCALE

PART DIMENSIONS MAY DIFFER SLIGHTLY  
DUE TO MANUFACTURER'S VARIANCES

METRIC UNITS USED  
FOR PART DESIGN

UNLESS OTHERWISE  
SPECIFIED UNITS ARE:

**mm**  
[inch]

LATEST VERSION  
7/17/2024

SHEET 1 OF 1