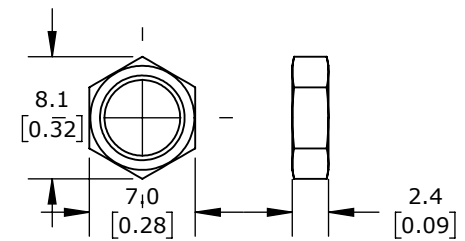


ISOMETRIC VIEW



M5X0.5 HEX NUT
(2 REQUIRED)

METROL LIMIT SWITCH, PRECISION TOUCH, 5MM DIAMETER, THREADED, 0.5MM PITCH, 21.5MM LENGTH, 2MM RADIUS HEAD, 1.5MM PLUNGER, 0.5N CONTACT FORCE, N.O. CONTACT(S), 1.6FT/0.5M CABLE LENGTH, CORE WIRE.

PT5M1WA

AutomationDirect.com
1-800-633-0405



3rd
ANGLE

NOT TO
SCALE

PART DIMENSIONS MAY DIFFER SLIGHTLY
DUE TO MANUFACTURER'S VARIANCES

METRIC UNITS USED
FOR PART DESIGN

UNLESS OTHERWISE
SPECIFIED UNITS ARE:

mm
[inch]

LATEST VERSION
7/17/2024

SHEET 1 OF 1