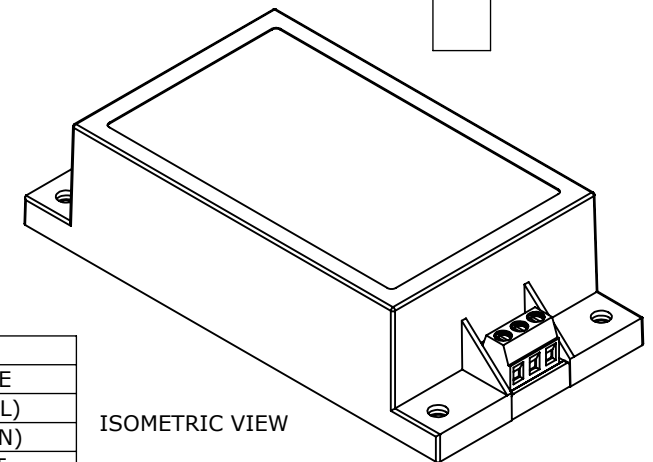
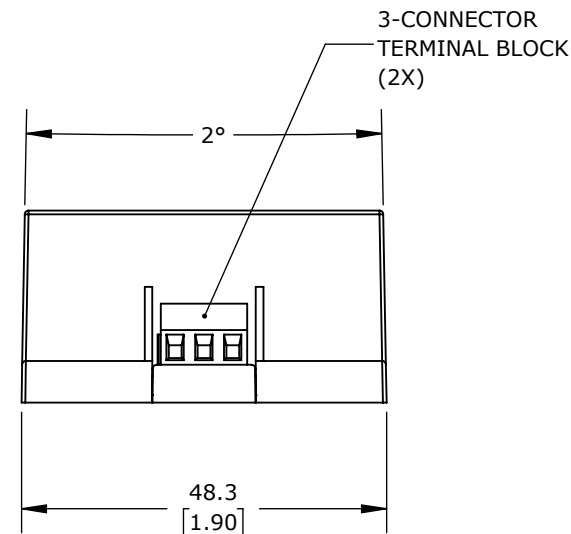
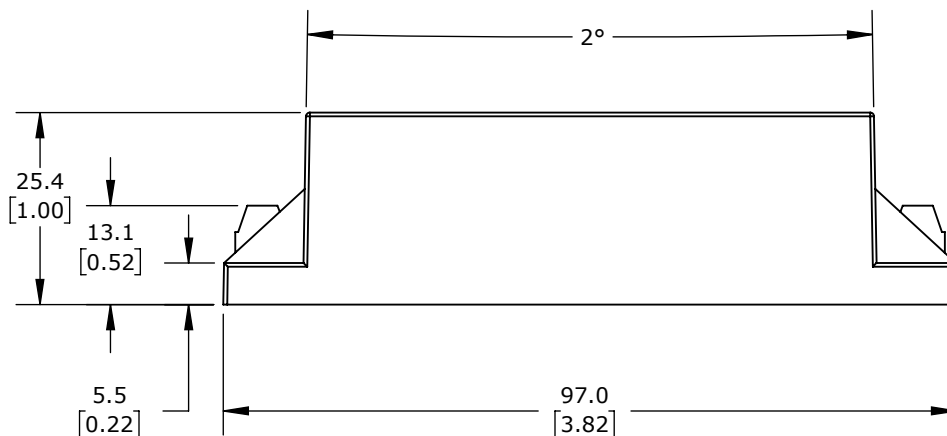


| PINOUT | |
|--------|---------------|
| PIN | SINGLE |
| 1 | AC IN (L) |
| 2 | AC IN (N) |
| 3 | -VOUT |
| 4 | NC |
| 5 | +VOUT |
| NC: | NOT CONNECTED |



MOUNTING SCREW LOCKED TORQUE: 0.2 Nm (2 kgfcm)



RHINO PSE-S SERIES SWITCHING POWER SUPPLY, 15 VDC @ 3.3A/50W, 120/240 VAC NOMINAL INPUT, 1-PHASE, ENCAPSULATED, PLASTIC RESIN AND FIBERGLASS HOUSING, CHASSIS MOUNT, SCREW TERMINALS.

PSE15-150-S

AutomationDirect.com
1-800-633-0405



3rd
ANGLE

NOT TO
SCALE

PART DIMENSIONS MAY DIFFER SLIGHTLY
DUE TO MANUFACTURER'S VARIANCES

METRIC UNITS USED
FOR PART DESIGN

UNLESS OTHERWISE
SPECIFIED UNITS ARE:

mm
[inch]

LATEST VERSION
6/11/2024

SHEET 1 OF 1