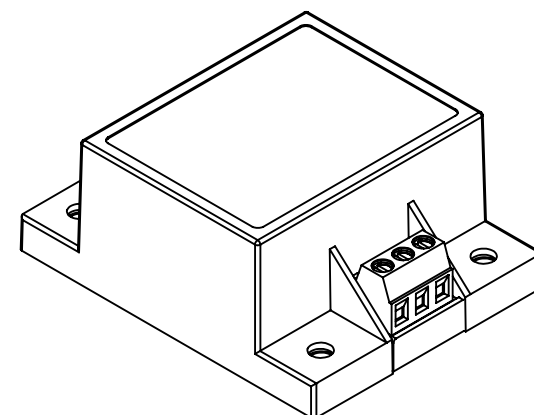
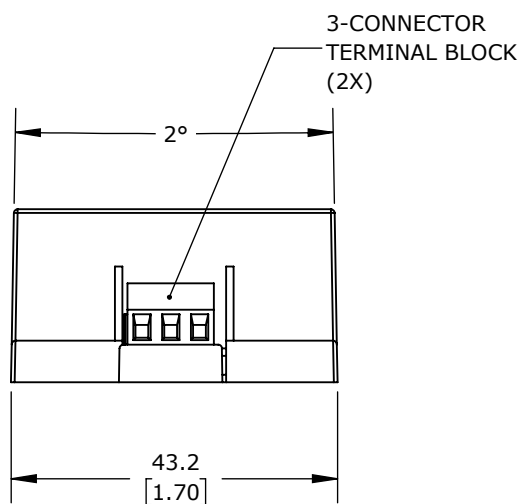
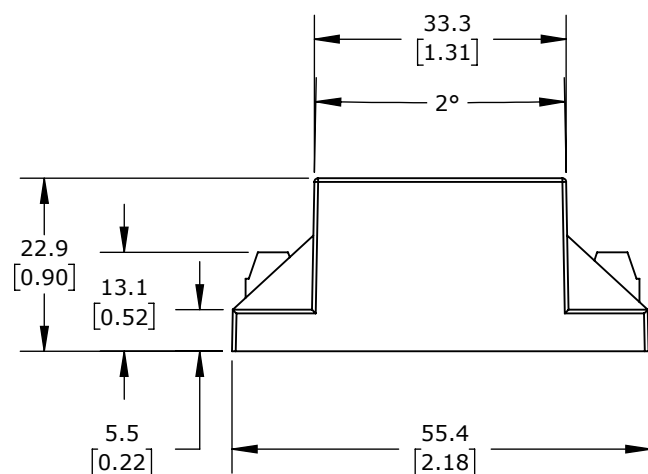


PINOUT	
PIN	SINGLE
1	AC IN (L)
2	AC IN (N)
3	-VOUT
4	NC
5	+VOUT
NC:	NOT CONNECTED



ISOMETRIC VIEW

MOUNTING SCREW LOCKED TORQUE: 0.2 Nm (2 kgfcm)



RHINO PSE-S SERIES SWITCHING POWER SUPPLY, 15 VDC @ 0.6A/10W, 120/240 VAC NOMINAL INPUT, 1-PHASE, ENCAPSULATED, PLASTIC RESIN AND FIBERGLASS HOUSING, CHASSIS MOUNT, SCREW TERMINALS.

PSE15-110-S

AutomationDirect.com
1-800-633-0405



3rd
ANGLE

NOT TO
SCALE

PART DIMENSIONS MAY DIFFER SLIGHTLY
DUE TO MANUFACTURER'S VARIANCES

METRIC UNITS USED
FOR PART DESIGN

UNLESS OTHERWISE
SPECIFIED UNITS ARE:

mm
[inch]

LATEST VERSION
6/5/2024

SHEET 1 OF 1