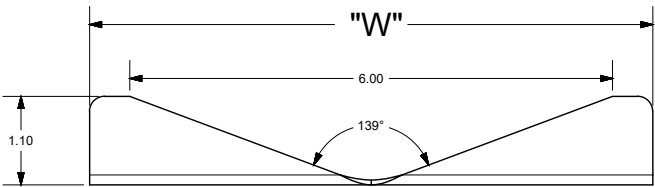
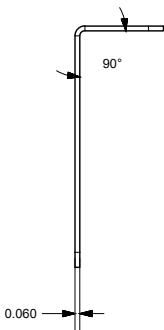
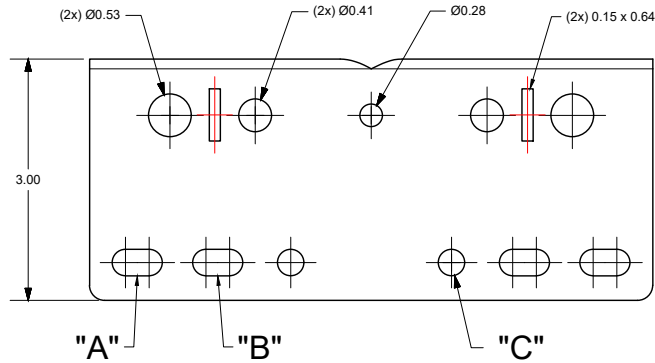


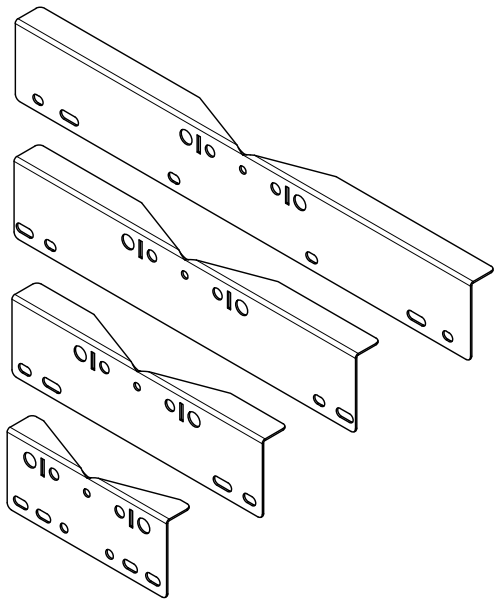
POLE MOUNT BRACKETS (RMPM6-8, RMPM10-12, RMPM14-16, RMPM18-24)



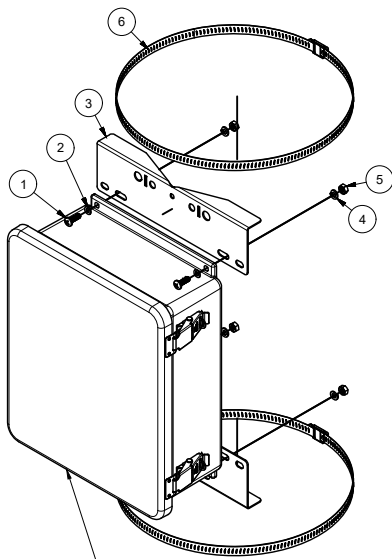
POLE MOUNT BRACKETS				
-	RMPM6-8	RMPM10-12	RMPM14-16	RMPM18-24
A	(2x) 0.33 x 0.63	(2x) 0.33 x 0.55	(2x) 0.33 x 0.74	(2x) 0.33 x 0.44
B	(2x) 0.33 x 0.63	(2x) 0.33 x 0.80	(2x) 0.33 x 0.50	(2x) 0.33 x 0.80
C	(2x) 0.33	X	X	(2x) 0.33 x 0.50
W	7.00	11.00	15.00	20.00



- NOTES:
- PANEL SHALL BE POWDER COATED USING TIGER DRYLAC RAL 9003 49-11400 - SIGNAL WHITE OR STAHLIN ENGINEERING APPROVED EQUIVALENT
 - PAINT FINISH SHALL COMPLY WITH QAF-810-01-03
 - ALL SURFACES SHALL BE CLASSIFIED AS "CLASS A" EXCEPT INTERNAL SURFACES OF ALL HOLES



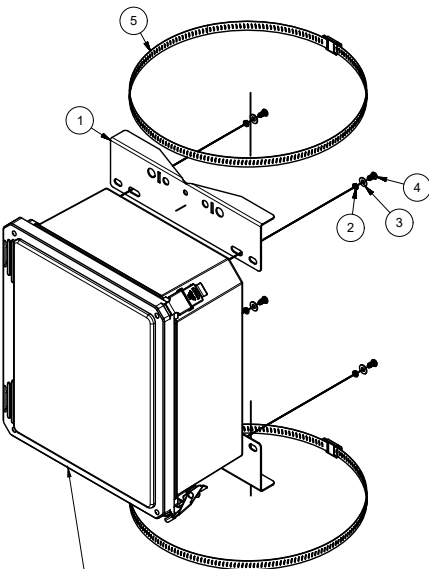
M-SERIES POLE MOUNT KIT (PMJXX-XX)



B.O.M. (PMJ10-12, PMJ14-16, PMJ18-24)			
ITEM	QTY	PART NUMBER	DESCRIPTION
1	4	RMSC14-20X3/4PPSS	1/4"-20 x 3/4" S.S. SCREW
2	4	RMWAS1_4	1/4" WASHER
3	2	RMPM10-12	POLE MOUNT BRACKET
4	4	RMWAS1/4L	1/4" LOCKWASHER
5	4	RMNUT1-4-20	1/4"-20 NUT
6	2	RMHC9/16SS	12" HOSE CLAMP
10	0	WoodenPole	

REF: M1210HPL

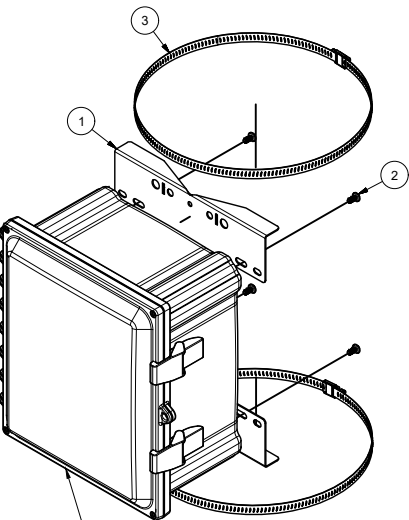
FR-SERIES POLE MOUNT KIT (PMDXX-XX)



B.O.M. (PMD6-8, PMD10-12, PMD14-16)			
ITEM	QTY	PART NUMBER	DESCRIPTION
1	2	RMPM10-12	POLE MOUNT BRACKET
2	4	RMWAS10L	#10 LOCK WASHER
3	4	RMWAS10ZN1	#10 WASHER
4	4	RMSC10-32X3/8PHSS	#10-32 x 3/8" SCREW
5	2	RMHC9/16SS	S.S. WORM-DRIVE CLAMP

REF: FR121006HPL

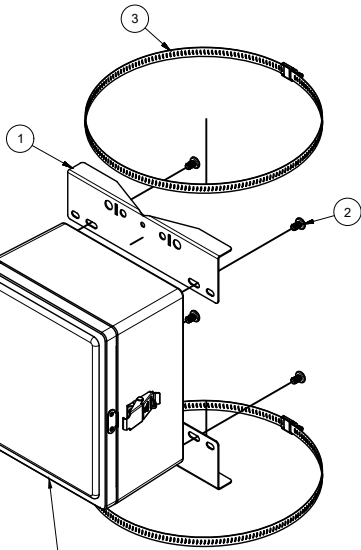
PC-SERIES POLE MOUNT KIT (PM10-12)



B.O.M. (PM10-12)			
ITEM	QTY	PART NUMBER	DESCRIPTION
1	2	RMPM10-12	POLE MOUNT BRACKET
2	4	RMSC1-4-20X1-2PPHM	1/4"-20 x 1/2" S.S. SCREW
3	2	RMHC9/16SS	WORM-DRIVE S.S. CLAMP

REF: AH12106

CL-SERIES POLE MOUNT KIT (PMCX-XX)




B.O.M. (PMC-7, PMC9-11, PMC-13)			
ITEM	QTY	PART NUMBER	DESCRIPTION
1	2	RMPM10-12	POLE MOUNT BRACKET
2	4	RMSC5-16-18X1-2PPSS	5/16"-18 x 1/2" SCREW
3	2	RMCH9/16SS	WORM-DRIVE S.S. CLAMP

REF: CE1109HPL

THIS DRAWING IS THE SOLE AND EXCLUSIVE PROPERTY OF ROBROY ENCLOSURES. NO PART OF THIS DRAWING MAY BE REPRODUCED, DISTRIBUTED OR PUBLICALLY DISPLAYED IN ANY FORM OR BY ANY MEANS WITHOUT THE EXPRESS WRITTEN PERMISSION OF ROBROY ENCLOSURES. ALL RIGHTS RESERVED UNDER THE COPYRIGHT LAWS. COPYRIGHT © 2022 ROBROY ENCLOSURES

SPECIAL REQUIREMENTS

NEMA 250: TYPE N/A IEC 60529: N/A COLOR: N/A COLOR STANDARD: N/A		STANDARD P/N: N/A		ALL DIMENSIONS ARE IN INCHES UNLESS OTHERWISE SPECIFIED		TOLERANCES UNLESS SPECIFIED		.XX ± 0.03 .XXX ± 0.010						
MATERIAL: 16 GA. CRS FINISH: POWDER COAT GRAY-7035				<div><div>Attabox</div><div>A ROBROY ENCLOSURES™ BRAND</div></div> <div>Robroy Enclosures 500 Maple Street Belding, Michigan 48809 Phone: 616-794-0700 Fax: 616-749-3378</div>										
REVISION HISTORY														
REV	DESCRIPTION	DATE	ENG							DRAWN BY	DATE	CUSTOMER		DWG
-	-	-	-							AA	5/3/22			PMJ14-16
-	-	-	-							SCALE		DESCRIPTION		PART NUMBER
-	-	-	-							DO NOT SCALE		PMK SERIES TABLE DWG		PMJ14-16
-	-	-	-											
-	-	-	-											
-	-	-	-											
-	-	-	-											
-	-	-	-											
3				2				1						



Robroy Enclosures
500 Maple Street
Belding, Michigan 48809
Phone: 616-794-0700
Fax: 616-749-3378