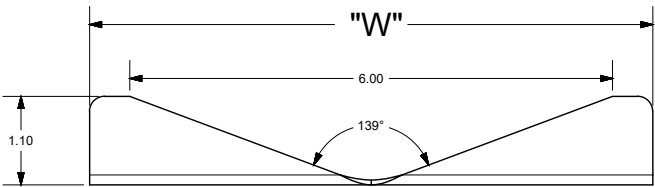
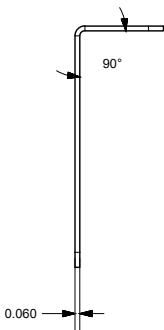
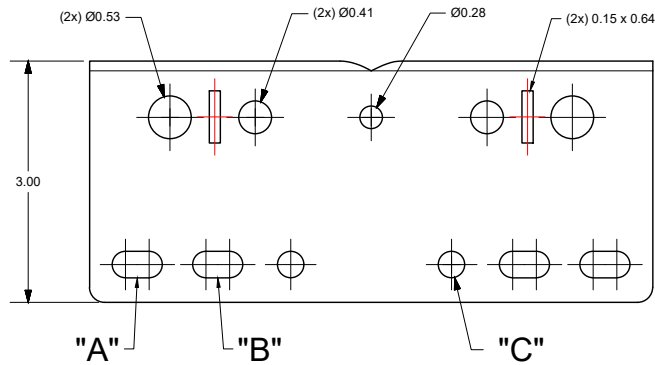


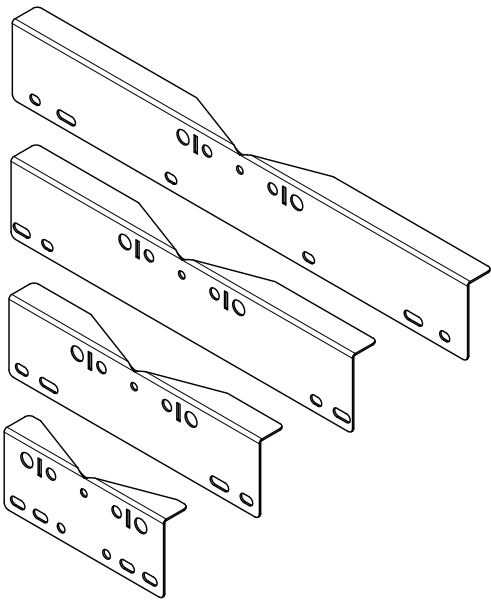
POLE MOUNT BRACKETS (RMPM6-8, RMPM10-12, RMPM14-16, RMPM18-24)



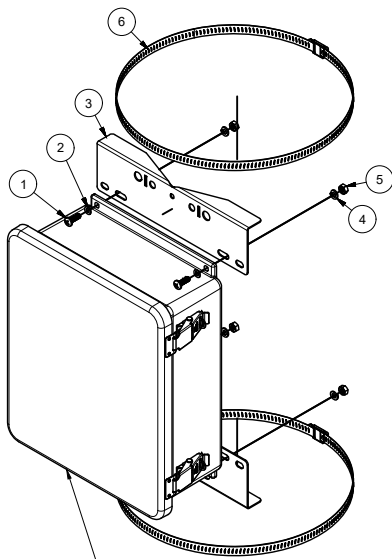
POLE MOUNT BRACKETS				
-	RMPM6-8	RMPM10-12	RMPM14-16	RMPM18-24
A	(2x) 0.33 x 0.63	(2x) 0.33 x 0.55	(2x) 0.33 x 0.74	(2x) 0.33 x 0.44
B	(2x) 0.33 x 0.63	(2x) 0.33 x 0.80	(2x) 0.33 x 0.50	(2x) 0.33 x 0.80
C	(2x) 0.33	X	X	(2x) 0.33 x 0.50
W	7.00	11.00	15.00	20.00



NOTES:
1. PANEL SHALL BE POWDER COATED USING
TIGER DRYLAC RAL 9003 49-11400 - SIGNAL WHITE OR
STAHLIN ENGINEERING APPROVED EQUIVALENT
2. PAINT FINISH SHALL COMPLY WITH QAF-810-01-03
3. ALL SURFACES SHALL BE CLASSIFIED AS "CLASS A"
EXCEPT INTERNAL SURFACES OF ALL HOLES



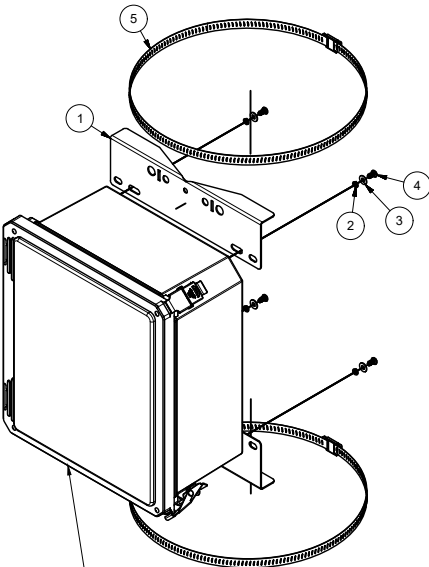
M-SERIES POLE MOUNT KIT (PMJXX-XX)



B.O.M. (PMJ10-12, PMJ14-16, PMJ18-24)			
ITEM	QTY	PART NUMBER	DESCRIPTION
1	4	RMSC14-20X3/4PPSS	1/4"-20 x 3/4" S.S. SCREW
2	4	RMWAS1_4	1/4" WASHER
3	2	RMPM10-12	POLE MOUNT BRACKET
4	4	RMWAS1/4L	1/4" LOCKWASHER
5	4	RMNUT1-4-20	1/4"-20 NUT
6	2	RMHC9/16SS	12" HOSE CLAMP
10	0	WoodenPole	

REF: M1210HPL

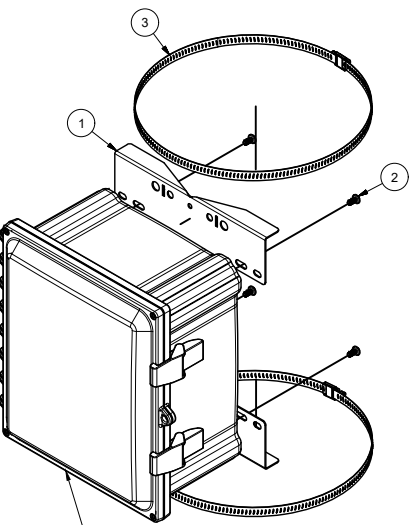
FR-SERIES POLE MOUNT KIT (PMDXX-XX)



B.O.M. (PMD6-8, PMD10-12, PMD14-16)			
ITEM	QTY	PART NUMBER	DESCRIPTION
1	2	RMPM10-12	POLE MOUNT BRACKET
2	4	RMWAS10L	#10 LOCK WASHER
3	4	RMWAS10ZN1	#10 WASHER
4	4	RMSC10-32X3/8PHSS	#10-32 x 3/8" SCREW
5	2	RMHC9/16SS	S.S. WORM-DRIVE CLAMP

REF: FR121006HPL

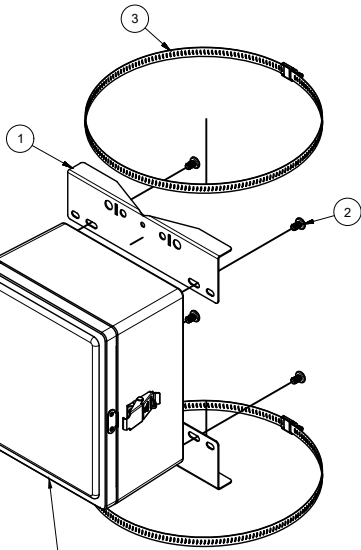
PC-SERIES POLE MOUNT KIT (PM10-12)



B.O.M. (PM10-12)			
ITEM	QTY	PART NUMBER	DESCRIPTION
1	2	RMPM10-12	POLE MOUNT BRACKET
2	4	RMSC1-4-20X1-2PPHM	1/4"-20 x 1/2" S.S. SCREW
3	2	RMHC9/16SS	WORM-DRIVE S.S. CLAMP

REF: AH12106

CL-SERIES POLE MOUNT KIT (PMCX-XX)




REF: CE1109HPL

B.O.M. (PMC-7, PMC9-11, PMC-13)			
ITEM	QTY	PART NUMBER	DESCRIPTION
1	2	RMPM10-12	POLE MOUNT BRACKET
2	4	RMSC5-16-18X1-2PPSS	5/16"-18 x 1/2" SCREW
3	2	RMCH9/16SS	WORM-DRIVE S.S. CLAMP

THIS DRAWING IS THE SOLE AND EXCLUSIVE
PROPERTY OF ROBROY ENCLOSURES.
NO PART OF THIS DRAWING MAY BE
REPRODUCED, DISTRIBUTED OR PUBLICALLY
DISPLAYED IN ANY FORM OR BY ANY MEANS
WITHOUT THE EXPRESS WRITTEN
PERMISSION OF ROBROY ENCLOSURES.
ALL RIGHTS RESERVED
UNDER THE COPYRIGHT LAWS.
COPYRIGHT © 2022 ROBROY ENCLOSURES

SPECIAL REQUIREMENTS

NEMA 250: TYPE N/A IEC 60529: N/A COLOR: N/A COLOR STANDARD: N/A			STANDARD P/N: N/A			ALL DIMENSIONS ARE IN INCHES UNLESS OTHERWISE SPECIFIED			TOLERANCES UNLESS SPECIFIED			.XX ± 0.03			.XXX ± 0.010														
MATERIAL: 16 GA. CRS FINISH: POWDER COAT GRAY-7035															<div> Attabox A ROBROY ENCLOSURES™ BRAND</div>														
REVISION HISTORY																													
REV		DESCRIPTION							DATE		ENG		<div><div>DRAWN AA</div><div>DATE 5/3/22</div><div>CUSTOMER</div><div>DWG PMD10-12</div></div>																
-		-							-		-																		
-		-							-		-																		
-		-							-		-																		
-		-							-		-																		
-		-							-		-																		
-		-							-		-																		
-		-							-		-		SCALE DO NOT SCALE																
										DESCRIPTION PMK SERIES TABLE DWG										PART NUMBER PMD10-12									