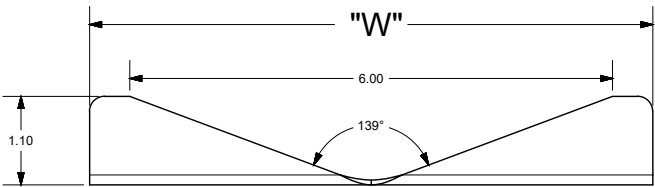
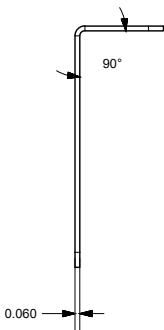
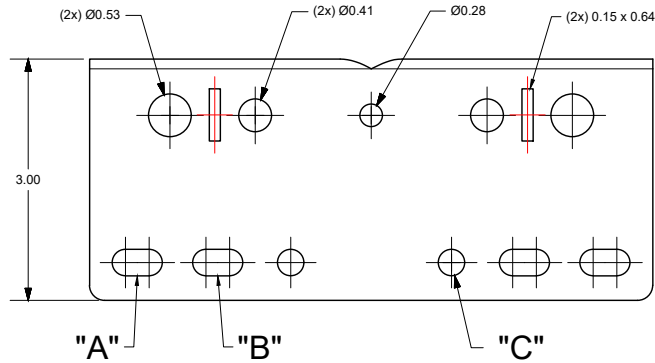


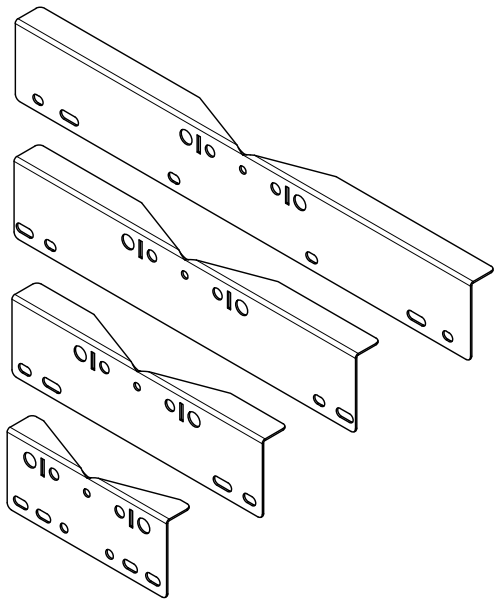
POLE MOUNT BRACKETS (RMPM6-8, RMPM10-12, RMPM14-16, RMPM18-24)



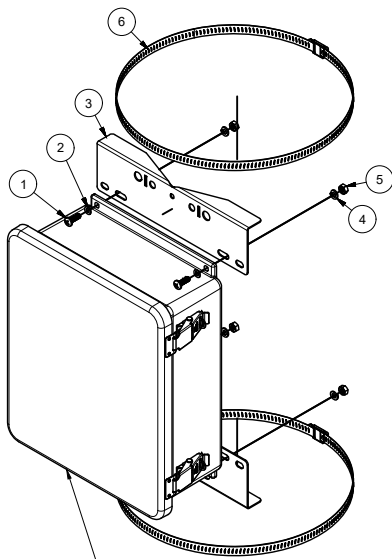
POLE MOUNT BRACKETS				
-	RMPM6-8	RMPM10-12	RMPM14-16	RMPM18-24
A	(2x) 0.33 x 0.63	(2x) 0.33 x 0.55	(2x) 0.33 x 0.74	(2x) 0.33 x 0.44
B	(2x) 0.33 x 0.63	(2x) 0.33 x 0.80	(2x) 0.33 x 0.50	(2x) 0.33 x 0.80
C	(2x) 0.33	X	X	(2x) 0.33 x 0.50
W	7.00	11.00	15.00	20.00



- NOTES:
- PANEL SHALL BE POWDER COATED USING TIGER DRYLAC RAL 9003 49-11400 - SIGNAL WHITE OR STAHLIN ENGINEERING APPROVED EQUIVALENT
 - PAINT FINISH SHALL COMPLY WITH QAF-810-01-03
 - ALL SURFACES SHALL BE CLASSIFIED AS "CLASS A" EXCEPT INTERNAL SURFACES OF ALL HOLES

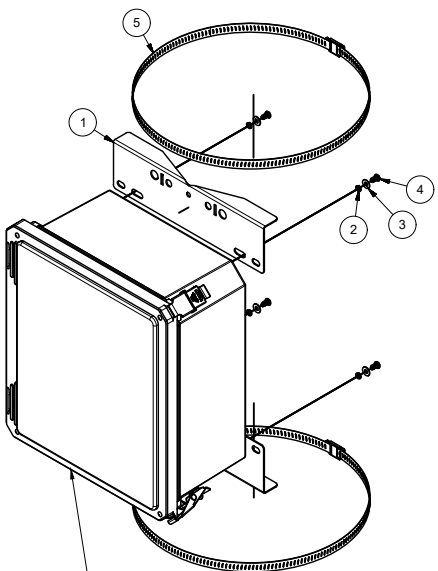


M-SERIES POLE MOUNT KIT (PMJXX-XX)



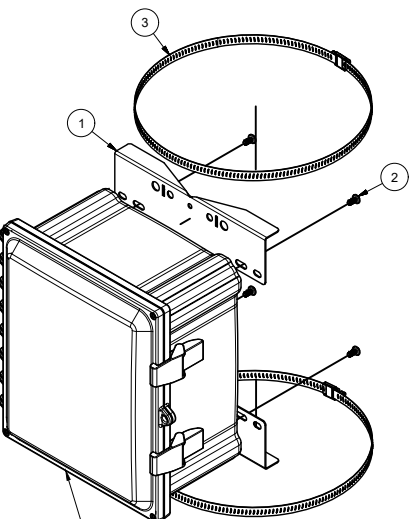
B.O.M. (PMJ10-12, PMJ14-16, PMJ18-24)			
ITEM	QTY	PART NUMBER	DESCRIPTION
1	4	RMSC14-20X3/4PPSS	1/4"-20 x 3/4" S.S. SCREW
2	4	RMWAS1_4	1/4" WASHER
3	2	RMPM10-12	POLE MOUNT BRACKET
4	4	RMWAS1/4L	1/4" LOCKWASHER
5	4	RMNUT1-4-20	1/4"-20 NUT
6	2	RMHC9/16SS	12" HOSE CLAMP
10	0	WoodenPole	

FR-SERIES POLE MOUNT KIT (PMDXX-XX)



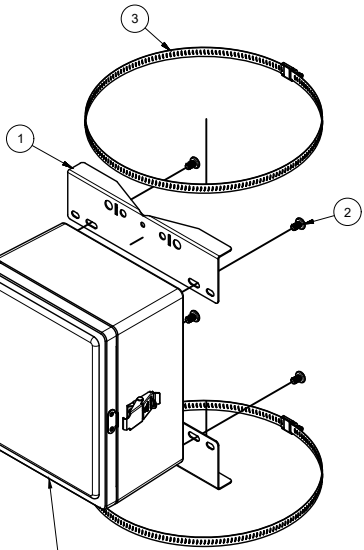
B.O.M. (PMD6-8, PMD10-12, PMD14-16)			
ITEM	QTY	PART NUMBER	DESCRIPTION
1	2	RMPM10-12	POLE MOUNT BRACKET
2	4	RMWAS10L	#10 LOCK WASHER
3	4	RMWAS10ZN1	#10 WASHER
4	4	RMSC10-32X3/8PHSS	#10-32 x 3/8" SCREW
5	2	RMHC9/16SS	S.S. WORM-DRIVE CLAMP

PC-SERIES POLE MOUNT KIT (PM10-12)



B.O.M. (PM10-12)			
ITEM	QTY	PART NUMBER	DESCRIPTION
1	2	RMPM10-12	POLE MOUNT BRACKET
2	4	RMSC1-4-20X1-2PPHM	1/4"-20 x 1/2" S.S. SCREW
3	2	RMHC9/16SS	WORM-DRIVE S.S. CLAMP

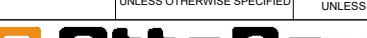
CL-SERIES POLE MOUNT KIT (PMCX-XX)



B.O.M. (PMC-7, PMC9-11, PMC-13)			
ITEM	QTY	PART NUMBER	DESCRIPTION
1	2	RMPM10-12	POLE MOUNT BRACKET
2	4	RMSC5-16-18X1-2PPSS	5/16"-18 x 1/2" SCREW
3	2	RMCH9/16SS	WORM-DRIVE S.S. CLAMP

THIS DRAWING IS THE SOLE AND EXCLUSIVE PROPERTY OF ROBROY ENCLOSURES. NO PART OF THIS DRAWING MAY BE REPRODUCED, DISTRIBUTED OR PUBLICALLY DISPLAYED IN ANY FORM OR BY ANY MEANS WITHOUT THE EXPRESS WRITTEN PERMISSION OF ROBROY ENCLOSURES. ALL RIGHTS RESERVED UNDER THE COPYRIGHT LAWS. COPYRIGHT © 2022 ROBROY ENCLOSURES

SPECIAL REQUIREMENTS

NEMA 250: TYPE N/A IEC 60529: N/A COLOR: N/A COLOR STANDARD: N/A		STANDARD PIN: N/A		ALL DIMENSIONS ARE IN INCHES UNLESS OTHERWISE SPECIFIED		TOLERANCES UNLESS SPECIFIED		.XX ± 0.03	.XXX ± 0.010
MATERIAL: 16 GA. CRS FINISH: POWDER COAT GRAY-7035				 AttaBox A ROBROY ENCLOSURES™ BRAND		Robroy Enclosures 500 Maple Street Belding, Michigan 48809 Phone: 616-794-0700 Fax: 616-749-3378			
REVISION HISTORY									
REV	DESCRIPTION	DATE	ENG	DRAWN BY	DATE	CUSTOMER		DWG	
-	-	-	-	AA	5/3/22			PMC9-11	
-	-	-	-						
-	-	-	-						
-	-	-	-						
-	-	-	-						
-	-	-	-						
3				2		1			
				DO NOT SCALE		DESCRIPTION PMK SERIES TABLE DWG		PART NUMBER PMC9-11	

Robroy Enclosures
500 Maple Street
Belding, Michigan 48809
Phone: 616-794-0700
Fax: 616-749-3378