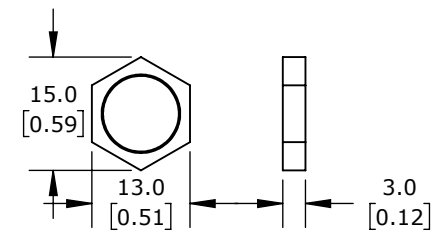
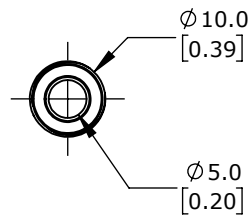
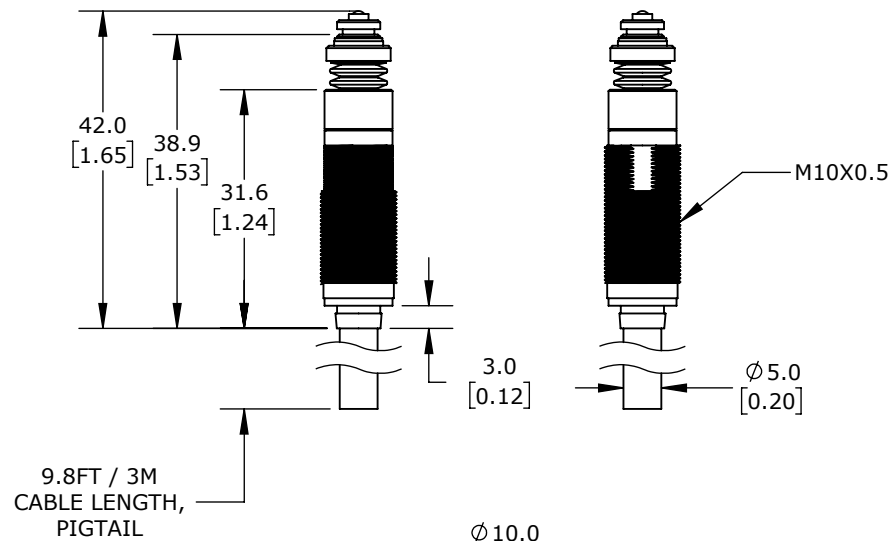


ISOMETRIC VIEW



M10X0.5 HEX NUT
(2 REQUIRED)

METROL LIMIT SWITCH, HIGH PRECISION TOUCH, 10MM DIAMETER, THREADED, 0.5MM PITCH, 42MM LENGTH,
2MM ROUND HEAD, 8.5MM PLUNGER, 1N CONTACT FORCE, N.C. CONTACT(S), 9.8FT/3M CABLE LENGTH, PIGTAIL.

P10DB-A

AutomationDirect.com
1-800-633-0405



3rd
ANGLE

NOT TO
SCALE

PART DIMENSIONS MAY DIFFER SLIGHTLY
DUE TO MANUFACTURER'S VARIANCES

METRIC UNITS USED
FOR PART DESIGN

UNLESS OTHERWISE
SPECIFIED UNITS ARE:

mm
[inch]

LATEST VERSION
7/17/2024

SHEET 1 OF 1