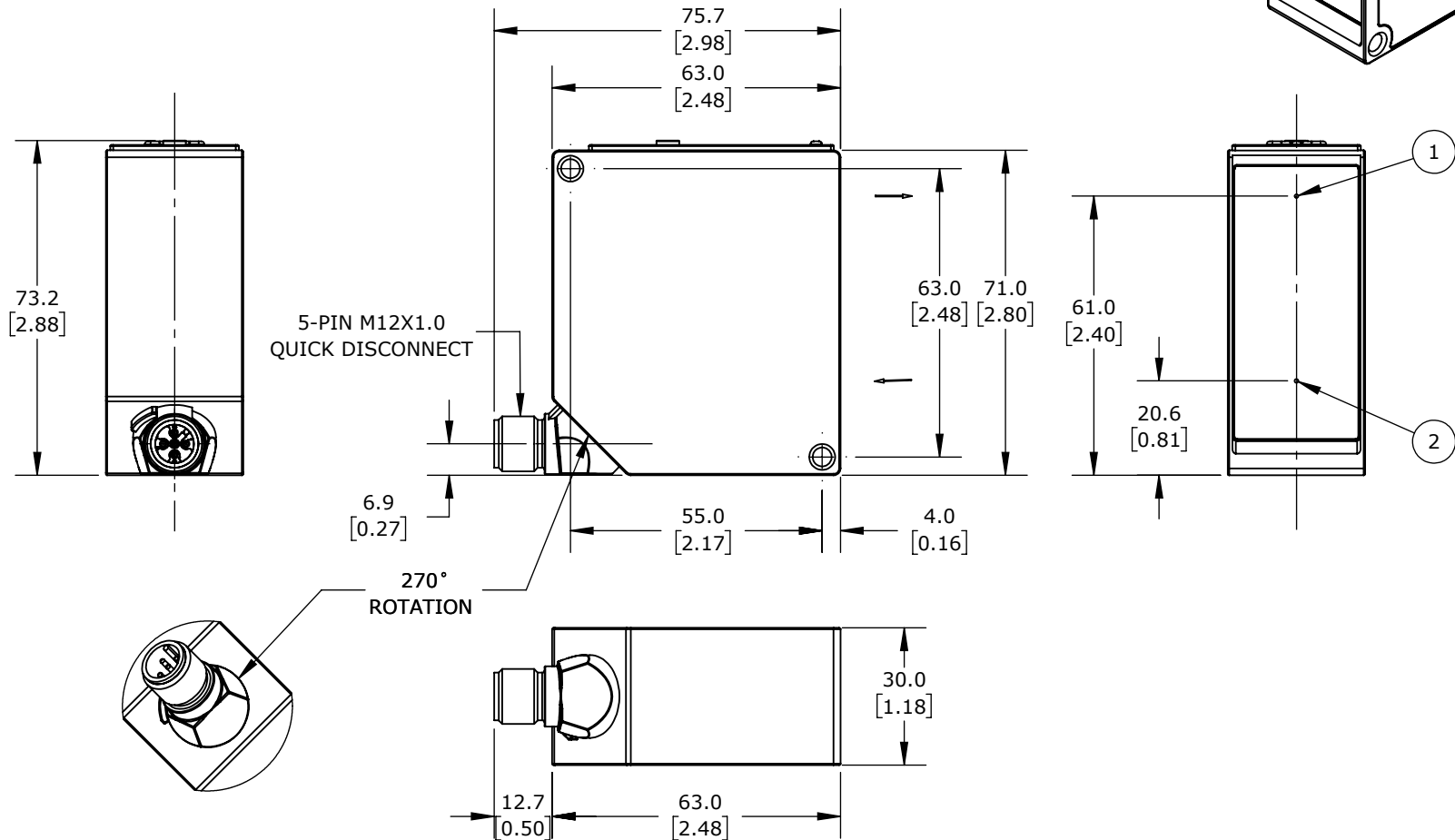
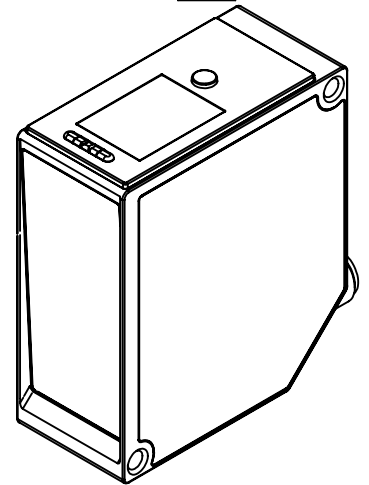
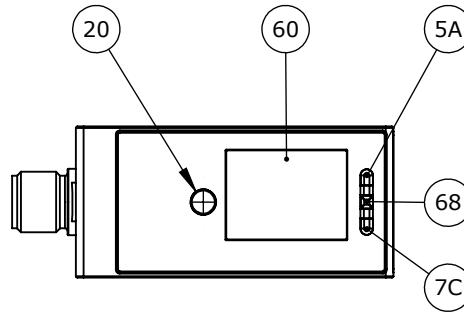


1 = TRANSMITTER DIODE  
 2 = RECEIVER DIODE  
 5A = SWITCHING STATUS INDICATOR, A1  
 60 = DISPLAY  
 68 = SUPPLY VOLTAGE INDICATOR  
 7C = ANALOG OUTPUT INDICATOR, A2  
 M5 SCREW = 2 Nm  
 ALL DIMENSIONS IN MM (1 MM = 0.03937 INCH)



WENGLOR PHOTOELECTRIC SENSOR, RECTANGULAR, DIFFUSE, CLASS 1 RED LASER LIGHT EMISSION, 150-1000MM SENSING DISTANCE, TEACH-IN BUTTON, ALUMINUM HOUSING, 5-PIN M12 QUICK-DISCONNECT.

**OPT2517**

AutomationDirect.com  
1-800-633-0405



3rd  
ANGLE

NOT TO  
SCALE

PART DIMENSIONS MAY DIFFER SLIGHTLY  
DUE TO MANUFACTURER'S VARIANCES

METRIC UNITS USED  
FOR PART DESIGN

UNLESS OTHERWISE  
SPECIFIED UNITS ARE:

**mm**  
[inch]

LATEST VERSION  
1/22/2025

SHEET 1 OF 1