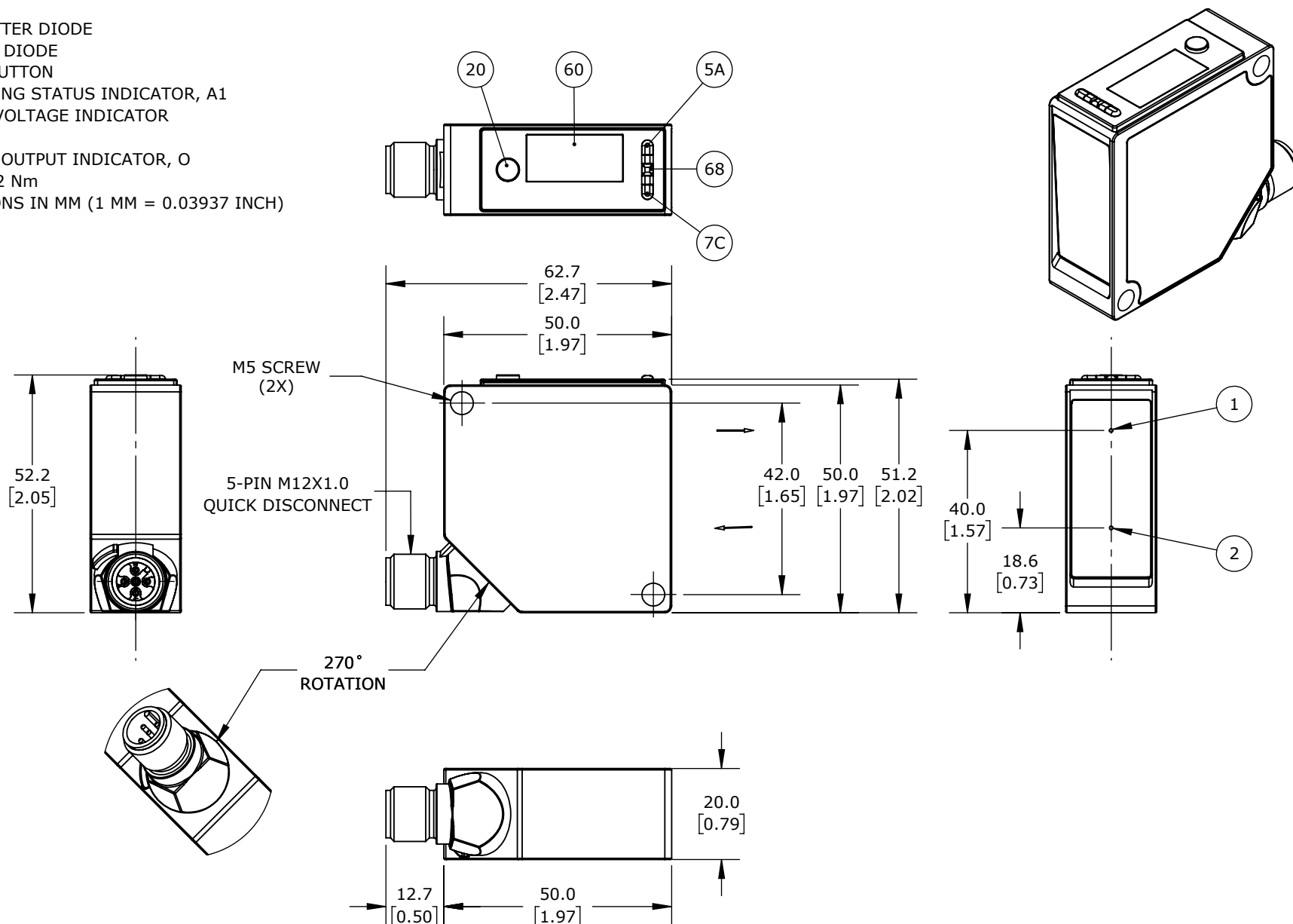


1 = TRANSMITTER DIODE
 2 = RECEIVER DIODE
 06 = TEACH BUTTON
 5A = SWITCHING STATUS INDICATOR, A1
 68 = SUPPLY VOLTAGE INDICATOR
 60 = DISPLAY
 7C = ANALOG OUTPUT INDICATOR, O
 M5 SCREW = 2 Nm
 ALL DIMENSIONS IN MM (1 MM = 0.03937 INCH)



WENGLOR PHOTOELECTRIC SENSOR, SQUARE, DIFFUSE, CLASS 1 RED LASER LIGHT EMISSION, 40-240MM
 SENSING DISTANCE, TEACH-IN BUTTON, ALUMINUM HOUSING, 5-PIN M12 QUICK-DISCONNECT.

OPT2504

AutomationDirect.com
 1-800-633-0405



3rd
 ANGLE

NOT TO
 SCALE

PART DIMENSIONS MAY DIFFER SLIGHTLY
 DUE TO MANUFACTURER'S VARIANCES

METRIC UNITS USED
 FOR PART DESIGN

UNLESS OTHERWISE
 SPECIFIED UNITS ARE:

mm
[inch]

LATEST VERSION
 1/7/2025

SHEET 1 OF 1