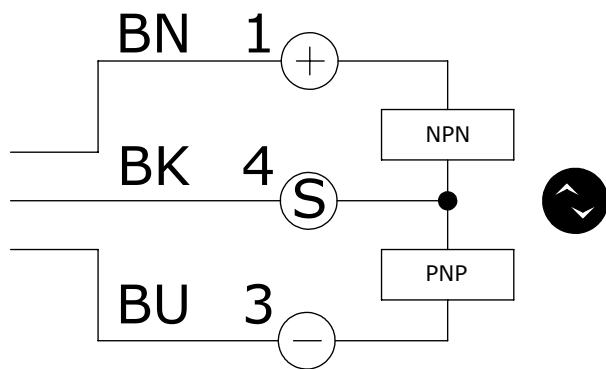
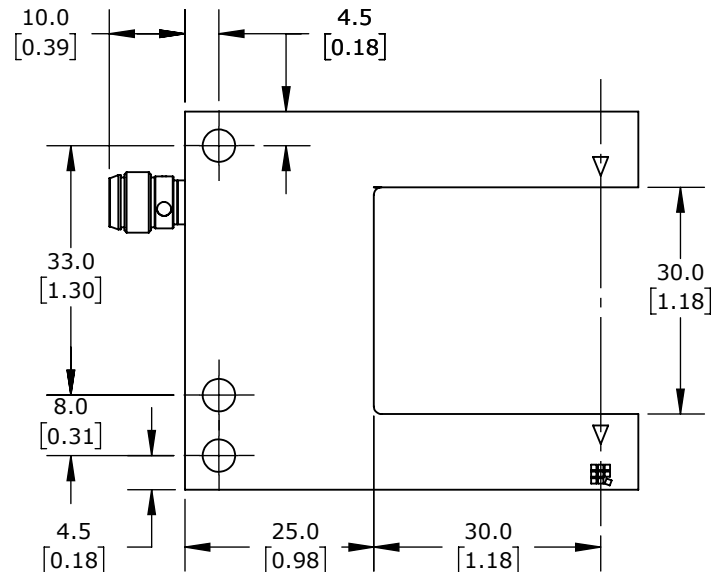
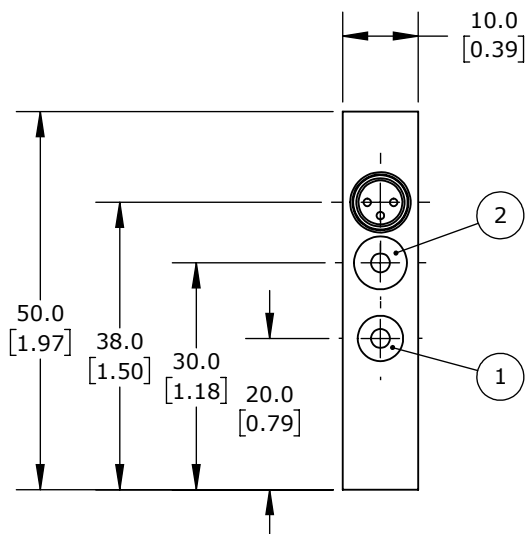
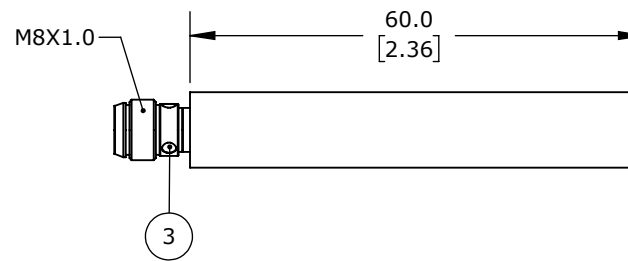


ISOMETRIC VIEW



BK: BLACK BN: BROWN BU:BLUE



1.) POTENTIOMETER 2.) NO / NC 3.) LED

DI-SORIC PHOTOELECTRIC FORK SENSOR, U-FRAME, DIE-CAST ZINC HOUSING, THROUGH-BEAM, CLASS 1 LASER LIGHT EMISSION, 0-30MM SENSING DISTANCE, 10-30 VDC OPERATING VOLTAGE, SELECTABLE LIGHT-ON/DARK-ON, PUSH-PULL NPN OR PNP, 3-WIRE, 3-PIN M8 QUICK-DISCONNECT.

OGUL031G3-T3

AutomationDirect.com
1-800-633-0405



3rd
ANGLE

NOT TO
SCALE

PART DIMENSIONS MAY DIFFER SLIGHTLY
DUE TO MANUFACTURER'S VARIANCES

METRIC UNITS USED
FOR PART DESIGN

UNLESS OTHERWISE
SPECIFIED UNITS ARE:

mm
[inch]

LATEST VERSION
3/21/2024

SHEET 1 OF 1