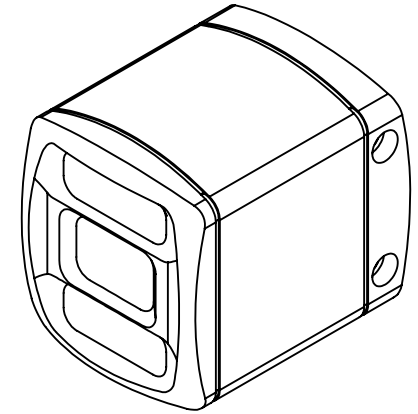
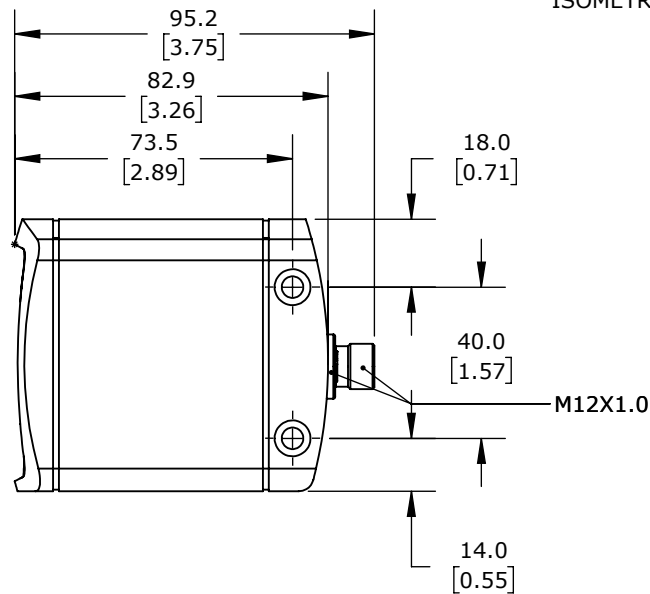
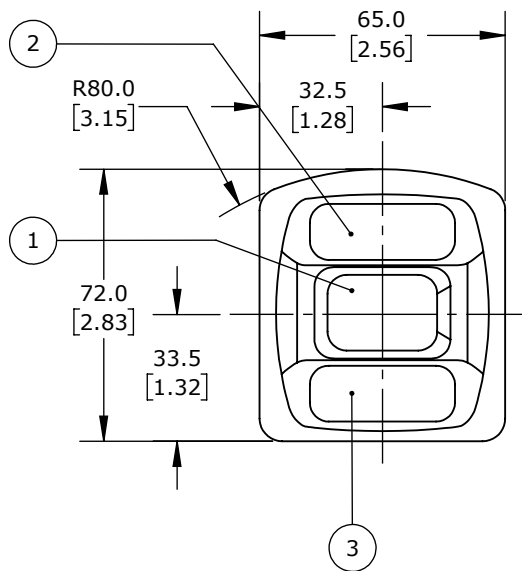


NOTES

1. LENS
2. ILLUMINATION UNIT
3. LED COLORS (YELLOW / GREEN)



ISOMETRIC VIEW



IFM EFCATOR O3D SERIES 3D VISION SENSOR, 300-8000MM OPERATING DISTANCE, WIDE ANGLE LENS, 176 X 132 RESOLUTION, INFRARED LIGHT EMISSION, TCP/IP AND ETHERNET/IP, IP65.

O3D304

AutomationDirect.com
1-800-633-0405



3rd
ANGLE

NOT TO
SCALE

PART DIMENSIONS MAY DIFFER SLIGHTLY
DUE TO MANUFACTURER'S VARIANCES

METRIC UNITS USED
FOR PART DESIGN

UNLESS OTHERWISE
SPECIFIED UNITS ARE:

mm
[inch]

LATEST VERSION
2/27/2024

SHEET 1 OF 1