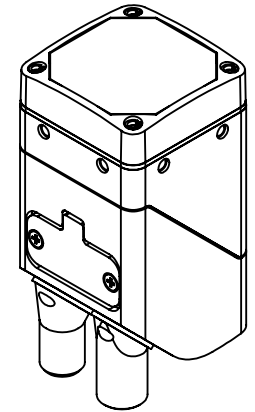
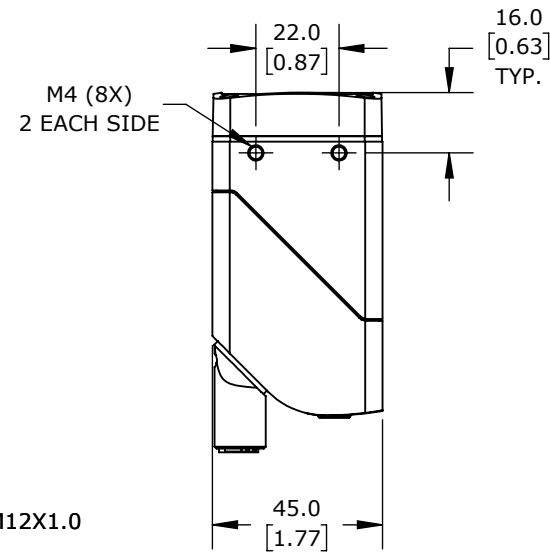
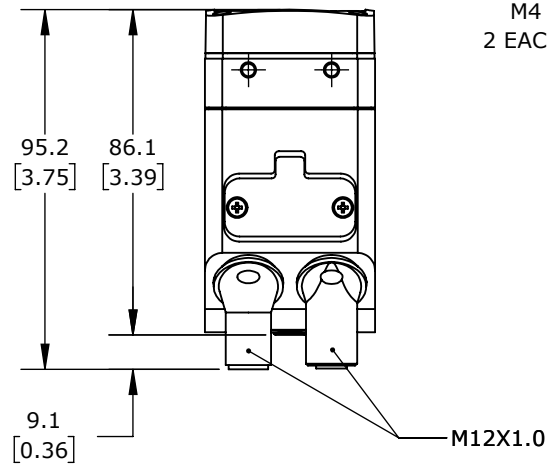
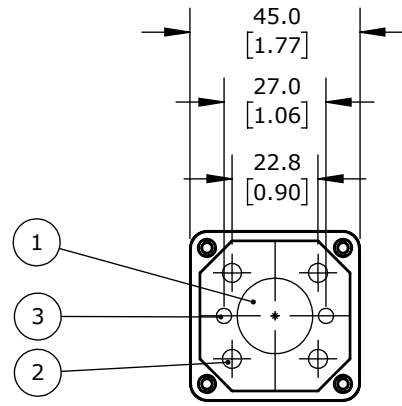


NOTES :

1. LENS
2. ILLUMINATION UNIT
3. LASER SPOTS



ISOMETRIC VIEW

IFM EFECTOR O2I SERIES BARCODE SCANNER, INDUSTRIAL MACHINE MOUNT, 1D AND 2D, IMAGER, INFRARED LIGHT EMISSION, WIDE ANGLE LENS, 1280 X 960 OPTICAL RESOLUTION, TCP/IP AND ETHERNET/IP, IP65.

O2I503

AutomationDirect.com
1-800-633-0405



3rd
ANGLE

NOT TO
SCALE

PART DIMENSIONS MAY DIFFER SLIGHTLY
DUE TO MANUFACTURER'S VARIANCES

METRIC UNITS USED
FOR PART DESIGN

UNLESS OTHERWISE
SPECIFIED UNITS ARE:

mm
[inch]

LATEST VERSION
9/9/2025

SHEET 1 OF 1