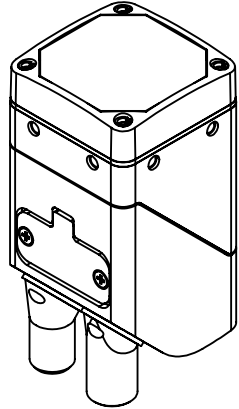
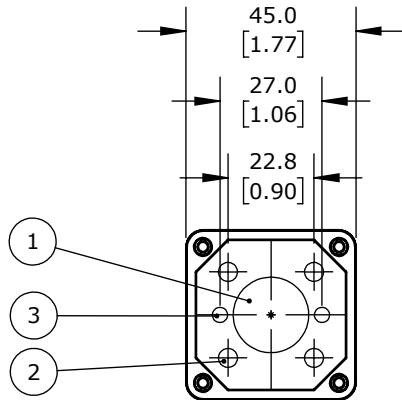
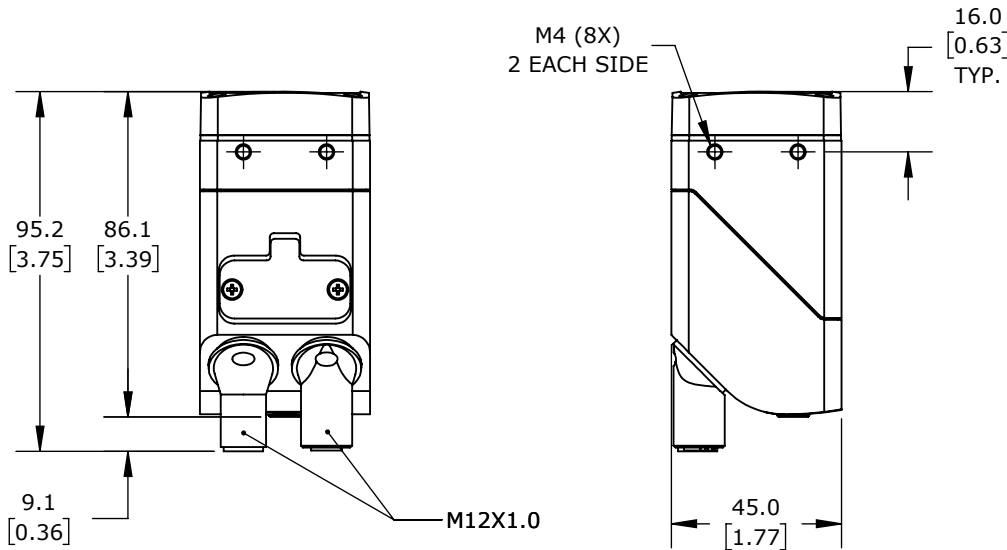


NOTES :

- 1. LENS
- 2. ILLUMINATION UNIT
- 3. LASER SPOTS



ISOMETRIC VIEW



IFM EFECTOR O2I SERIES BARCODE SCANNER, INDUSTRIAL MACHINE MOUNT, 1D AND 2D, IMAGER, VISIBLE RED LIGHT EMISSION, WIDE ANGLE LENS, 1280 X 960 OPTICAL RESOLUTION, TCP/IP AND ETHERNET/IP, IP65.

O2I502

AutomationDirect.com
1-800-633-0405



3rd
ANGLE

NOT TO
SCALE

PART DIMENSIONS MAY DIFFER SLIGHTLY
DUE TO MANUFACTURER'S VARIANCES

METRIC UNITS USED
FOR PART DESIGN

UNLESS OTHERWISE
SPECIFIED UNITS ARE:

mm
[inch]

LATEST VERSION
2/27/2024

SHEET 1 OF 1