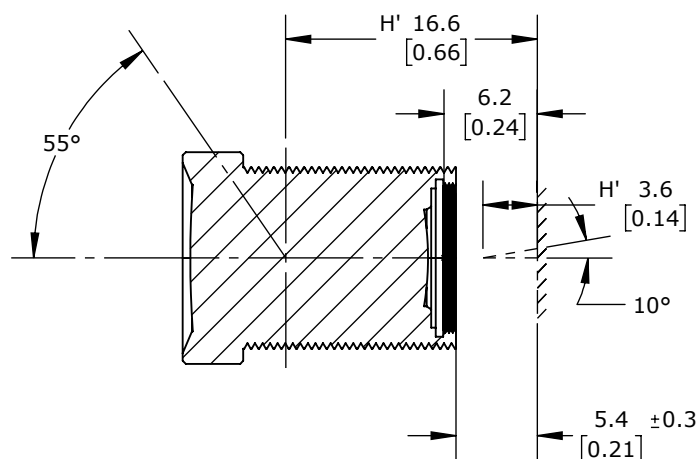
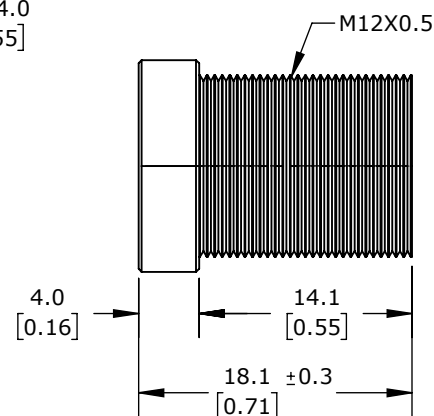
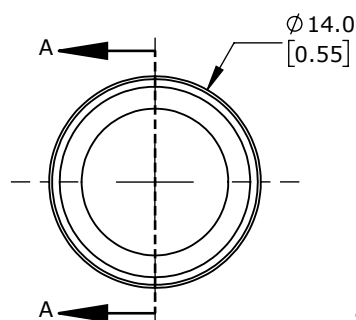


ISOMETRIC VIEW



SECTION A-A



DI-SORIC LENS, 3.6MM FOCAL LENGTH, FIXED F/8.0 APERTURE, S-MOUNT.

**O-S1-S-036-80**

AutomationDirect.com  
1-800-633-0405



3rd  
ANGLE

NOT TO  
SCALE

PART DIMENSIONS MAY DIFFER SLIGHTLY  
DUE TO MANUFACTURER'S VARIANCES

METRIC UNITS USED  
FOR PART DESIGN

UNLESS OTHERWISE  
SPECIFIED UNITS ARE:

**mm**  
**[inch]**

LATEST VERSION  
2/28/2025

SHEET 1 OF 1