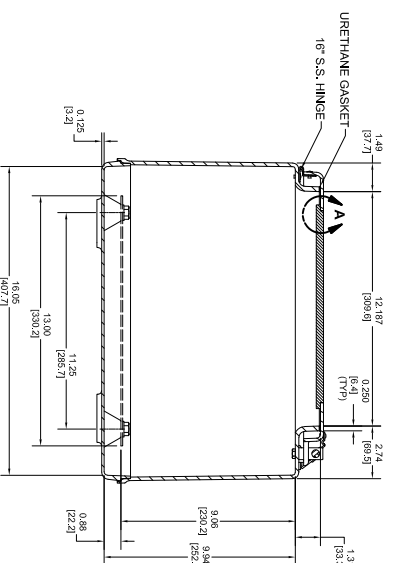
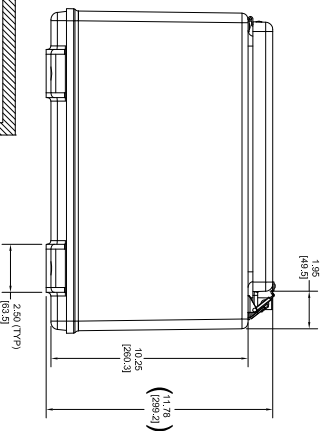
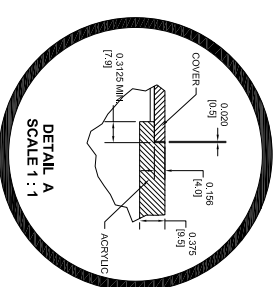


SECTION B-B



SECTION A-A



SPECIAL REQUIREMENTS

1. ROUTE COVER FACE DOWN AND REMOVE THE TWO MOUNTING BOSS WHEN REQUIRED.
2. ROUTE BOTH SURFACES BEFORE BONDING MINIMUM 0.015\"/>

UL FILE #E4358, VOL. 1, SPEC. GEN. TYPE RATINGS 1, 2R, 4X, 12.

STAHLIN N SERIES ENCLOSURE, NEMA 1/3/3R/4X/12, 20 X 16 X 10IN (HXVXD), WALL MOUNT, FIBERGLASS REINFORCED POLYESTER, GRAY, SINGLE-DOOR, (2) TWIST-LOCK LATCHES, PADLOCK HASP AND STAPLE, SAR ACRYLIC WINDOW.

NW201610HW/T

AutonationDirect.com
1-800-633-0405



3rd
ANGLE
NOT TO
SCALE
PART DIMENSIONS MAY DIFFER SLIGHTLY
DUE TO MANUFACTURER'S VARIANCES

METRIC UNITS USED
FOR PART DESIGN

UNLESS OTHERWISE
SPECIFIED UNITS ARE:

inch
[mm]

LATEST VERSION
1/27/2023

SHEET 1 OF 1